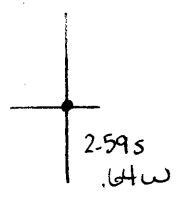


40°22'30"

Latitude

80°35'00"

Longitude



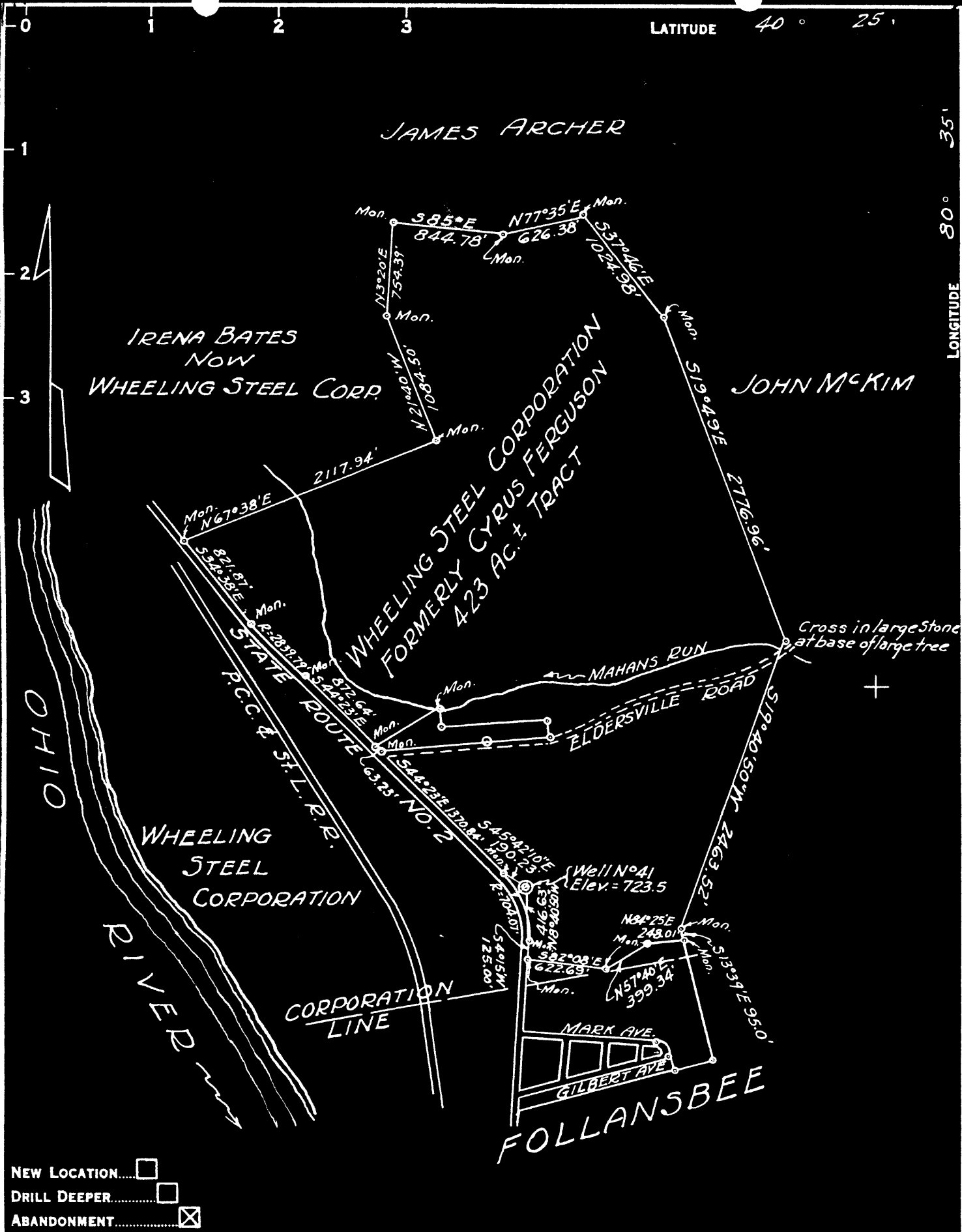
Topo Location

7.5' Loc. _____ 15' Loc. _____
 _____ (calc.) _____

Company Wheeling Steel Corp
 Farm Wheeling Steel Corp #41
 15' Quad _____
 (sec.) _____
 7.5' Quad Steubenville East
 District Cross Creek

WELL LOCATION PLAT

County 009 Permit 30060



COMPANY WHEELING STEEL CORPORATION
 ADDRESS (GENERAL OFFICE) WHEELING, W. VA.
 FARM WHEELING STEEL CORPORATION FORMERLY CYRUS FERGUSON
 TRACT _____ ACRES 423± LEASE NO. _____
 WELL (FARM) NO. 41 SERIAL NO. _____
 ELEVATION (SPIRIT LEVEL) 723.50
 QUADRANGLE STEBENVILLE
 COUNTY BROOKE DISTRICT CROSS CREEK
 ENGINEER GEORGE K. LANG - C.C. SMITH'S SONS ENGS. INC.
 ENGINEER'S REGISTRATION No. 1590
 FILE No. _____ DRAWING No. _____
 DATE July 7, 1949 SCALE 1" = 1000'

STATE OF WEST VIRGINIA
 DEPARTMENT OF MINES
 OIL AND GAS DIVISION
 CHARLESTON

WELL LOCATION MAP
 FILE No. BRO-60-A

+ DENOTES LOCATION OF WELL ON UNITED STATES TOPOGRAPHIC MAPS, SCALE 1 TO 62,500. LATITUDE AND LONGITUDE LINES BEING REPRESENTED BY BORDER LINES AS SHOWN.
 - DENOTES ONE INCH SPACES ON BORDER LINE OF ORIGINAL TRACING.