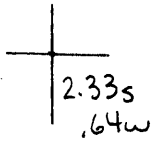


Latitude

Longitude



Topo Location

7.5' Loc. _____ 15' Loc. _____
 _____ (cale.) _____

Company Wheeling Steel Corp

Farm Wheeling Steel Corp #30

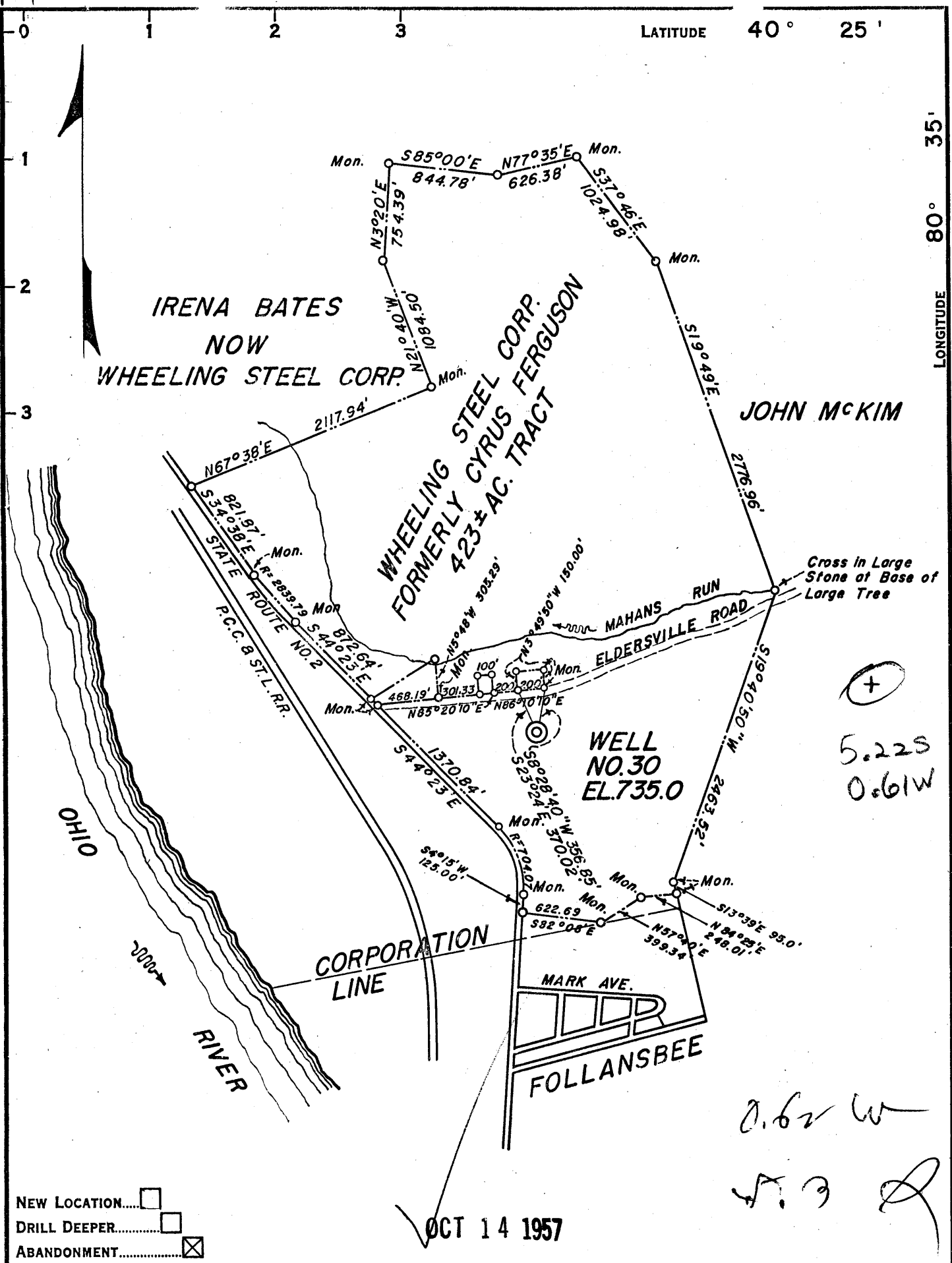
15' Quad _____
(sec.)

7.5' Quad Steubenville East

District Cross Creek

WELL LOCATION PLAT

County 009 **Permit** 30061



NEW LOCATION.....
 DRILL DEEPER.....
 ABANDONMENT.....

OCT 14 1957

(+)
 5.22S
 0.61W
 0.62 W
 S. J. Q

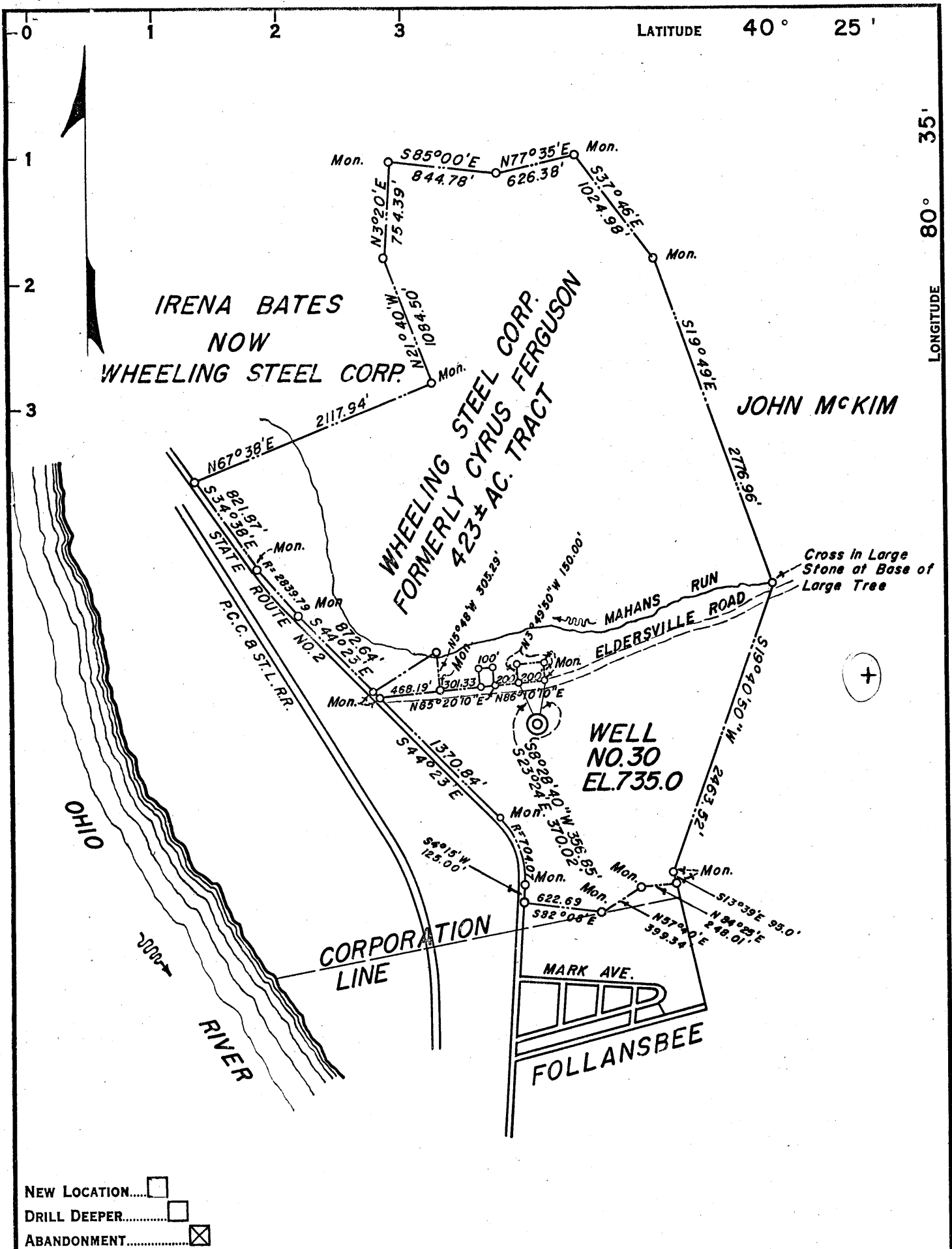
COMPANY WHEELING STEEL CORP.
 ADDRESS (GENERAL OFFICE) WHEELING, W.VA.
 FARM WHG. STEEL CORP. FORMERLY CYRUS FERGUSON
 TRACT _____ ACRES 423± LEASE No. _____
 WELL (FARM) No. 30 SERIAL No. _____
 ELEVATION (SPIRIT LEVEL) 735.0
 QUADRANGLE STEBENVILLE
 COUNTY BROOKE DISTRICT CROSS CREEK
 ENGINEER SIDNEY C. SMITH
 ENGINEER'S REGISTRATION No. 240
 FILE No. _____ DRAWING No. _____
 DATE SEPT. 20, 1957 SCALE 1" = 1000'

STATE OF WEST VIRGINIA
 DEPARTMENT OF MINES
 OIL AND GAS DIVISION
 CHARLESTON

WELL LOCATION MAP

FILE No. BRO-61-A

+ DENOTES LOCATION OF WELL ON UNITED STATES TOPOGRAPHIC MAPS, SCALE 1 TO 62,500, LATITUDE AND LONGITUDE LINES BEING REPRESENTED BY BORDER LINES AS SHOWN.
 — DENOTES ONE INCH SPACES ON BORDER LINE OF ORIGINAL TRACING.



NEW LOCATION.....
 DRILL DEEPER.....
 ABANDONMENT.....

COMPANY WHEELING STEEL CORP.	
ADDRESS (GENERAL OFFICE) WHEELING, W.VA.	
FARM WHG. STEEL CORP.	FORMERLY CYRUS FERGUSON
TRACT _____	ACRES 423± LEASE No. _____
WELL (FARM) No. 30	SERIAL No. _____
ELEVATION (SPIRIT LEVEL) 735.0	
QUADRANGLE STEBENVILLE	
COUNTY BROOKE	DISTRICT CROSS CREEK
ENGINEER SIDNEY C. SMITH	
<i>Sidney C. Smith</i> ENGINEER'S REGISTRATION No. 240	
FILE No. _____	DRAWING No. _____
DATE SEPT. 20, 1957 SCALE 1" = 1000'	

STATE OF WEST VIRGINIA
 DEPARTMENT OF MINES
 OIL AND GAS DIVISION
 CHARLESTON

WELL LOCATION MAP

FILE No. BRO-61-A

+ DENOTES LOCATION OF WELL ON UNITED STATES TOPOGRAPHIC MAPS, SCALE 1 TO 62,500, LATITUDE AND LONGITUDE LINES BEING REPRESENTED BY BORDER LINES AS SHOWN.
 — DENOTES ONE INCH SPACES ON BORDER LINE OF ORIGINAL TRACING.