

NEW LOCATION.....  
 DRILL DEEPER.....  
 ABANDONMENT.....

NOV 18 1957

⊕  
 5.425  
 0.53W

0.53W  
 5.52 A

COMPANY <b>WHEELING STEEL CORP.</b>	
ADDRESS <b>(GENERAL OFFICE) WHEELING, W. VA.</b>	
FARM <b>WHG. STEEL CORP.</b>	FORMERLY <b>CYRUS FERGUSON</b>
TRACT _____	ACRES <b>423 ±</b> LEASE No. _____
WELL (FARM) No. <b>49</b>	SERIAL No. _____
ELEVATION (SPIRIT LEVEL) <b>768.8</b>	
QUADRANGLE <b>STEBENVILLE</b>	
COUNTY <b>BROOKE</b>	DISTRICT <b>CROSS CREEK</b>
ENGINEER <b>SYDNEY C. SMITH</b>	
ENGINEER'S REGISTRATION No. <b>240</b>	
FILE No. _____	DRAWING No. _____
DATE <b>SEPT. 20, 1957</b> SCALE <b>1" = 1000'</b>	

STATE OF WEST VIRGINIA  
 DEPARTMENT OF MINES  
 OIL AND GAS DIVISION  
 CHARLESTON

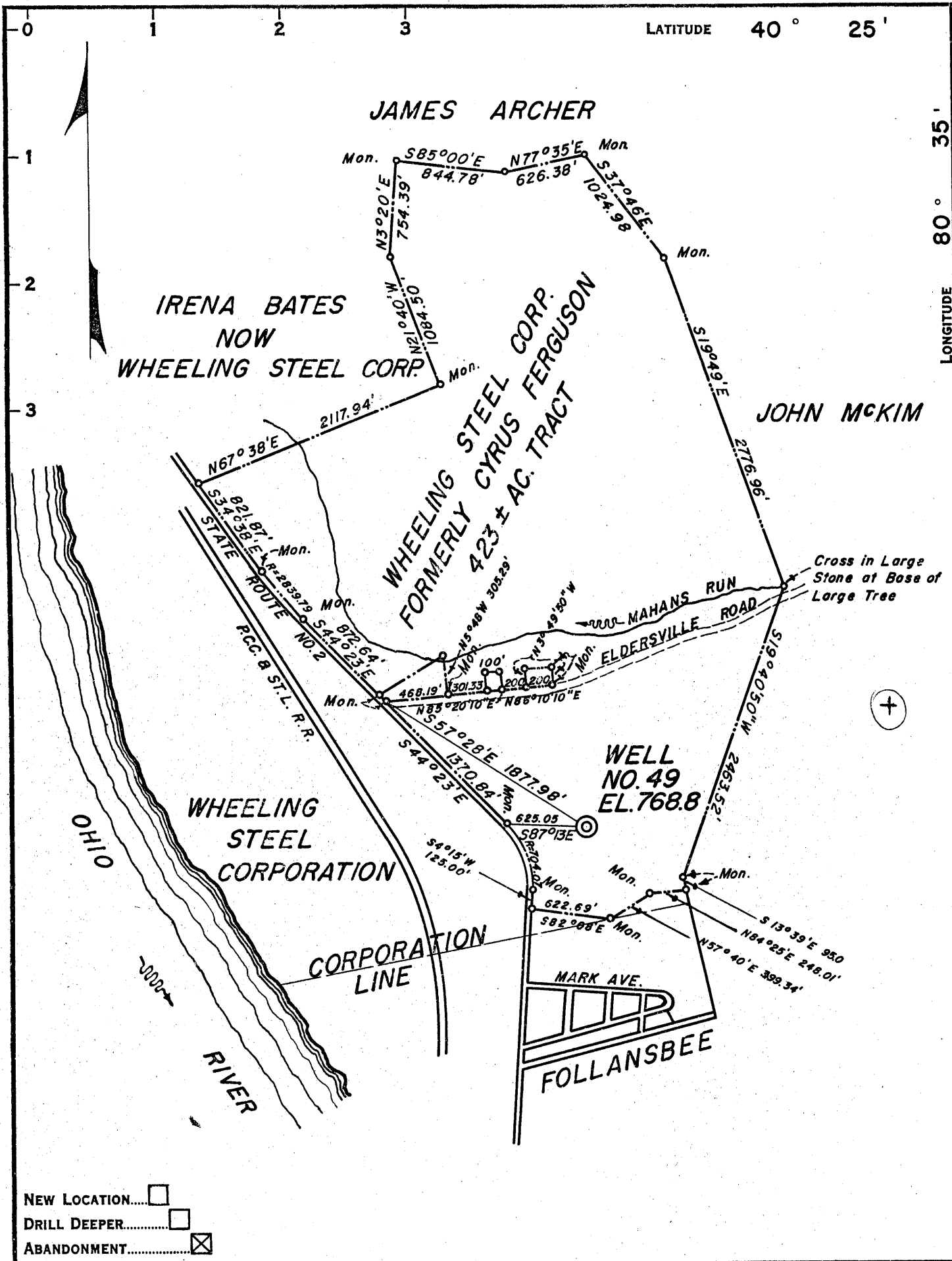
**WELL LOCATION MAP**

FILE No. **BRO-62-A**

⊕ DENOTES LOCATION OF WELL ON UNITED STATES TOPOGRAPHIC MAPS, SCALE 1 TO 62,500, LATITUDE AND LONGITUDE LINES BEING REPRESENTED BY BORDER LINES AS SHOWN.

— DENOTES ONE INCH SPACES ON BORDER LINE OF ORIGINAL TRACING.

WHEELING STEEL CORP. No. 49 — WHEELING STEEL CORP. — BRO-62-A



COMPANY **WHEELING STEEL CORP.**

ADDRESS **(GENERAL OFFICE) WHEELING, W. VA.**

FARM **WHG. STEEL CORP. FORMERLY CYRUS FERGUSON**

TRACT \_\_\_\_\_ ACRES **423 ±** LEASE No. \_\_\_\_\_

WELL (FARM) No. **49** SERIAL No. \_\_\_\_\_

ELEVATION (SPIRIT LEVEL) **768.8**

QUADRANGLE **STEBENVILLE**

COUNTY **BROOKE** DISTRICT **CROSS CREEK**

ENGINEER **SYDNEY C. SMITH**  
*Sydney C. Smith*

ENGINEER'S REGISTRATION No. **240**

FILE No. \_\_\_\_\_ DRAWING No. \_\_\_\_\_

DATE **SEPT. 20, 1957** SCALE **1" = 1000'**

STATE OF WEST VIRGINIA  
DEPARTMENT OF MINES  
OIL AND GAS DIVISION  
CHARLESTON

**WELL LOCATION MAP**

FILE No. **BRO-62-A**

+ DENOTES LOCATION OF WELL ON UNITED STATES TOPOGRAPHIC MAPS, SCALE 1 TO 62,500. LATITUDE AND LONGITUDE LINES BEING REPRESENTED BY BORDER LINES AS SHOWN.

— DENOTES ONE INCH SPACES ON BORDER LINE OF ORIGINAL TRACING.