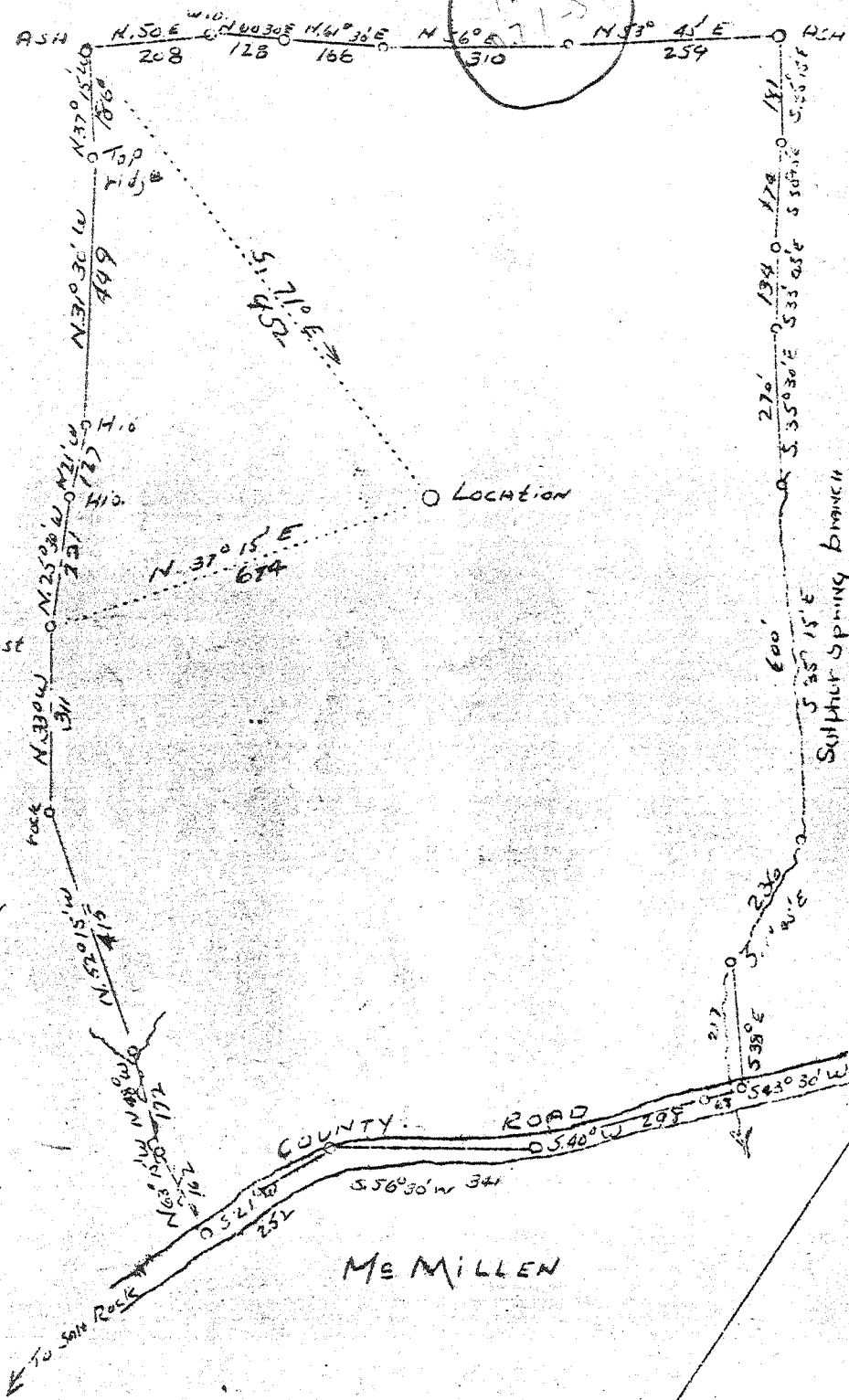


Cam Nat P

LATITUDE 38° 20'

LONGITUDE 82° 10'

B B\* BIAS  
4-12-5



NEW LOCATION

See Vol IV P 57

Company R.H. Adkins  
 Address Hamlin, W.Va.  
 Farm B.F. Morris  
 Tract \_\_\_\_\_ Acres 51 Lease No. \_\_\_\_\_  
 Well (Farm) No. 1 Serial No. \_\_\_\_\_  
 Elevation ( Spirit Level ) 740  
 Quadrangle Milton SW  
 County Cabell District McComas  
 Engineer Breece & Carper, by H.W. Carper, Jr.  
 Engineer's Registration No. 738  
 File No. \_\_\_\_\_ Drawing No. \_\_\_\_\_  
 Date Dec. 2, 1957 Scale 1"=300'

STATE OF WEST VIRGINIA  
 Department of Mines  
 OIL AND GAS DIVISION  
 CHARLESTON  
 WELL LOCATION MAP  
 File No. CAB-300

+ Denotes location of well on United States Topographic Maps, scale 1 to 62,500, latitude and longitude lines being represented by border lines as shown.  
 — Denotes one inch spaces on border line of original tracing.

No samples 3-6-2012 / Deep Well

WEST VIRGINIA DEPARTMENT OF MINES  
OIL AND GAS DIVISION

W E L L R E C O R D

Gas Well

Permit No. Cab. 300

Milton Quad.

CASING & TUBING

Left in well

Company The Curry Gas Co.  
Address Hamlin, W.Va.  
Farm B.F. Morris Acres 51  
Location Tylers Creek  
Well No. 1 Elev. 740  
District McComas County Cabell  
Surface  
Mineral B.F. Morris, Huntington, W.Va.  
Drilling Commenced Dec. 8, 1937  
Completed March 1, 1938  
Date Shot Feb. 24, 1938 Depth  
Volume 53,280 Cu.Ft.  
Rock Press. 360#

10  
6 5/8  
2

1 jt.  
1586  
3589

PACKER

Kind HookWall  
Size Midget  
Depth 1568

Formation Color <sup>Hor</sup> Top Base Result Formation Color <sup>Hor</sup> Top Base Result

Red Clay		0	20				
Slate	Blue	20	250				
Sand		350	440				
✓ Coal		440	445				
Sand		445	585				
Slate & Shell		585	880				
✓ Salt Sand		880	1116				
Slate	Blue	1116	1161				
✓ Maxon Sand		1161	1235				
Slate		1235	1245				
✓ Little Lime		1245	1263				
✓ Slate - <i>POWE</i>		1263	1265				
✓ Big Lime		1265	1439				
✓ Keener Sand		1439	1464				
Slate & Shells		1464	1495				
✓ Injun Sand		1495	1570				
Break		1570	1574				
Shell		1574	1600				
Slate & Shells		1600	1930				
Shell		1930	1960				
Slate & Shells		1960	2015				
✓ Shale	Brown	2015	2030				
✓ Berea Grit		2030	2043				
Slate		2043	2093				
Shells		2093	2118				
Slate & Shell	Blue	2118	2395				
Shale	L. Brown	2395	2500				
Slate & Shells		2500	2738				
Slate		2738	2852				
Shale	Brown	2852	2880				
Slate		2880	2926				
Shale	Brown	2926	3224				
Slate	White	3224	3465				
Shale	Brown	3465	3542				
✓ Corniferous Lime		3542	3590				

1495  
700  
755

461