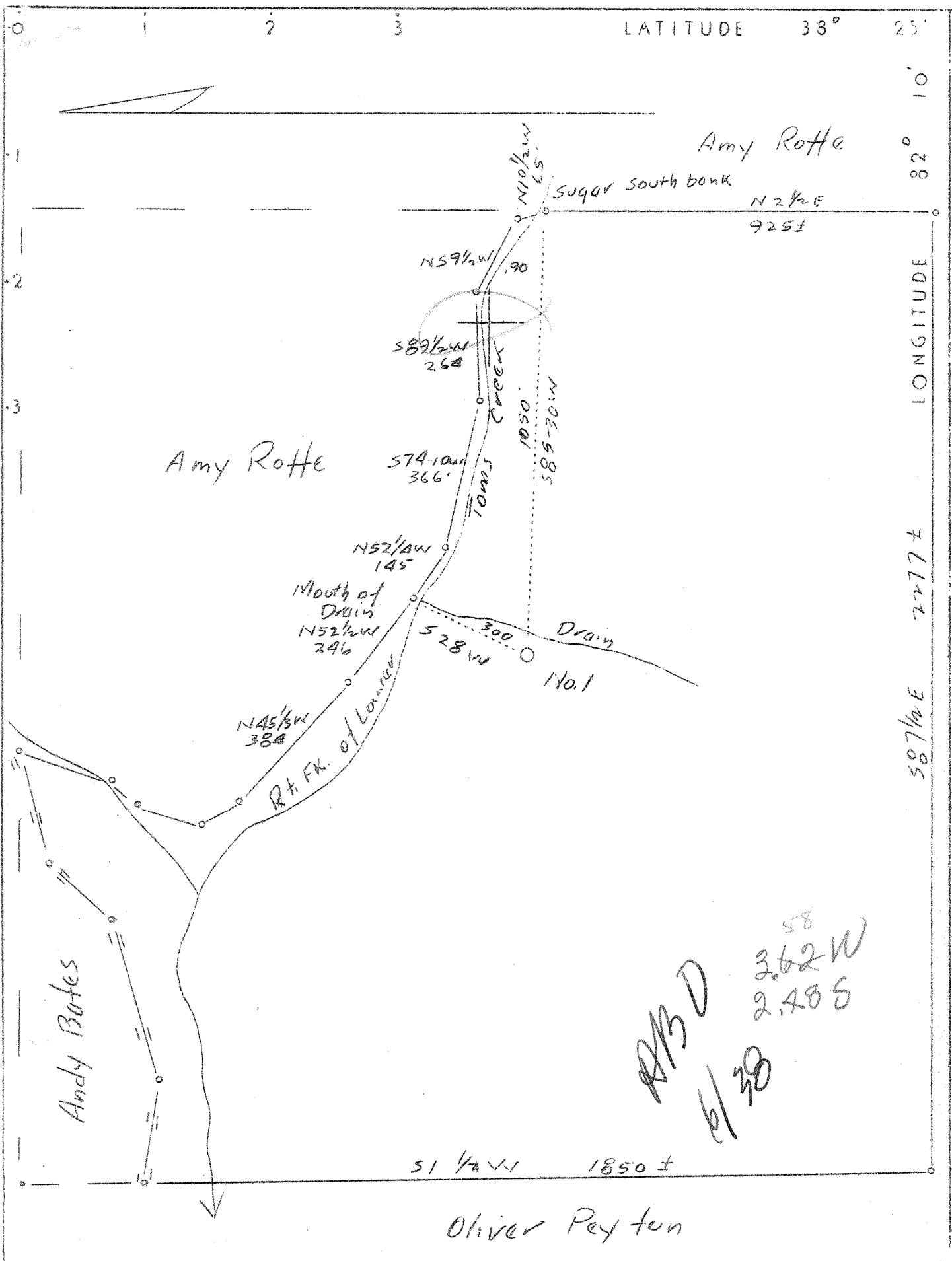


M



Company Harry Hatfield Company
 Address Barboursville, W.Va.
 Farm Leslie Hatfield
 Tract 1 Acres 70 Lease No. _____
 Well (Farm) No. 1 Serial No. 1
 Elevation (Spirit Level) 820
 Quadrangle Milton *W.C.*
 County Cabell District McComas
 Engineer G.C. Ewing
 Engineer's Registration No. 309
 File No. _____ Drawing No. _____
 Date 3-12-38 Scale 1"-400'

STATE OF WEST VIRGINIA
 Department of Mines
 OIL AND GAS DIVISION
 CHARLESTON

WELL LOCATION MAP
 File No. CAB-311

+ Denotes location of well on United States Topographic Maps, scale 1 to 62,500, latitude and longitude lines being represented by border lines as shown.
 — Denotes one inch spaces on border line of original tracing.

6-6-206

WEST VIRGINIA DEPARTMENT OF MINES

OIL & GAS DIVISION

WELL RECORD

Permit No. Cab-311

Dry Hole

- Quad.

Company	Harry Hatfield Co.,	10	17	17
Address	Barboursville, W. Va.	8-1/4	354-6	
Farm	Leslie Hatfield ACRES 70	6-5/8	1945	1945
Well No.	One ELEV. 820			
District	McComas - Cabell County			
Surface & Mineral	-			
Drilling commenced	March 26, 1938			
Drilling completed	May 27, 1938			
Date shot	6-1-38 - Depth 2005			
Open Flow	-			
Volums	-			
Rock Pressure	-			
Oil	1-1/2 bbls.,			
Fresh Water	760			
Salt Water	1350 & 1400			

Formation	Color	Hor s	Top	Base	Result	Formation	Color	Hor s	Top	Base	Result
Surface			0	17		Shells			2400	2500	
Sand rock			17	22		Slate&Shells			2500	2710	
Mud			22	46		Slate Dark			2710	2790	
Blue Rock			46	52		Shale			2790	2830	
Red Clay			52	65		Brown Shale			2830	2980	No Gas
Slate			65	150							Shale is
Sand			150	175							about 30%
Slate			175	250		Slate white			2980	3150	Slate
Sand			250	270		Brown Shale			3150	3235	will not
Slate			270	375		Slate White			3235	3275	shoot
Red Rock			375	400	Bad cave	375					
Slate			400	425		Brown Shale			3275	3522	Little
Red Rock			425	440							Gas 3435
Slate			440	500		Total Depth				3529	
Yellow Sand			500	540							
Slate			540	710							
Salt Sand			710	875	Water 760						
Slate			875	910							
Lime			910	925							
Sand			925	970							
Slate&Shells			970	1175							
Sand			1175	1185							
Slate&Shells			1185	1200							
Lime			1200	1210							
Sand			1210	1220							
Slate			1220	1300							
Sand			1300	1485							
Red Rock			1485	1495							
Slate			1495	1515							
Lime			1515	1535							
Slate			1535	1545							
Maxon Sand			1545	1575							
Little Lime			1575	1610							
Pencil Cave			1610	1618							
Big Lime			1618	1768							
Slate & Red Rock			1768	1783							
Big Injun			1783	1808							
Slate			1808	1820							
Lime Shell			1820	1830	Sand at 1830 to 1933 has water (set pipe through it)						
Sand white			1830	1933							
Slate			1933	1943							
Shell			1943	1975							
Slate&Shells			1975	2135							
Shell			2135	2185							
Slate&Shells			2185	2350							
Slate Dark			2350	2380							
Brown Shale			2380	2387							
Berea Sand			2387	2400	Show of oil in Berea - no gas						