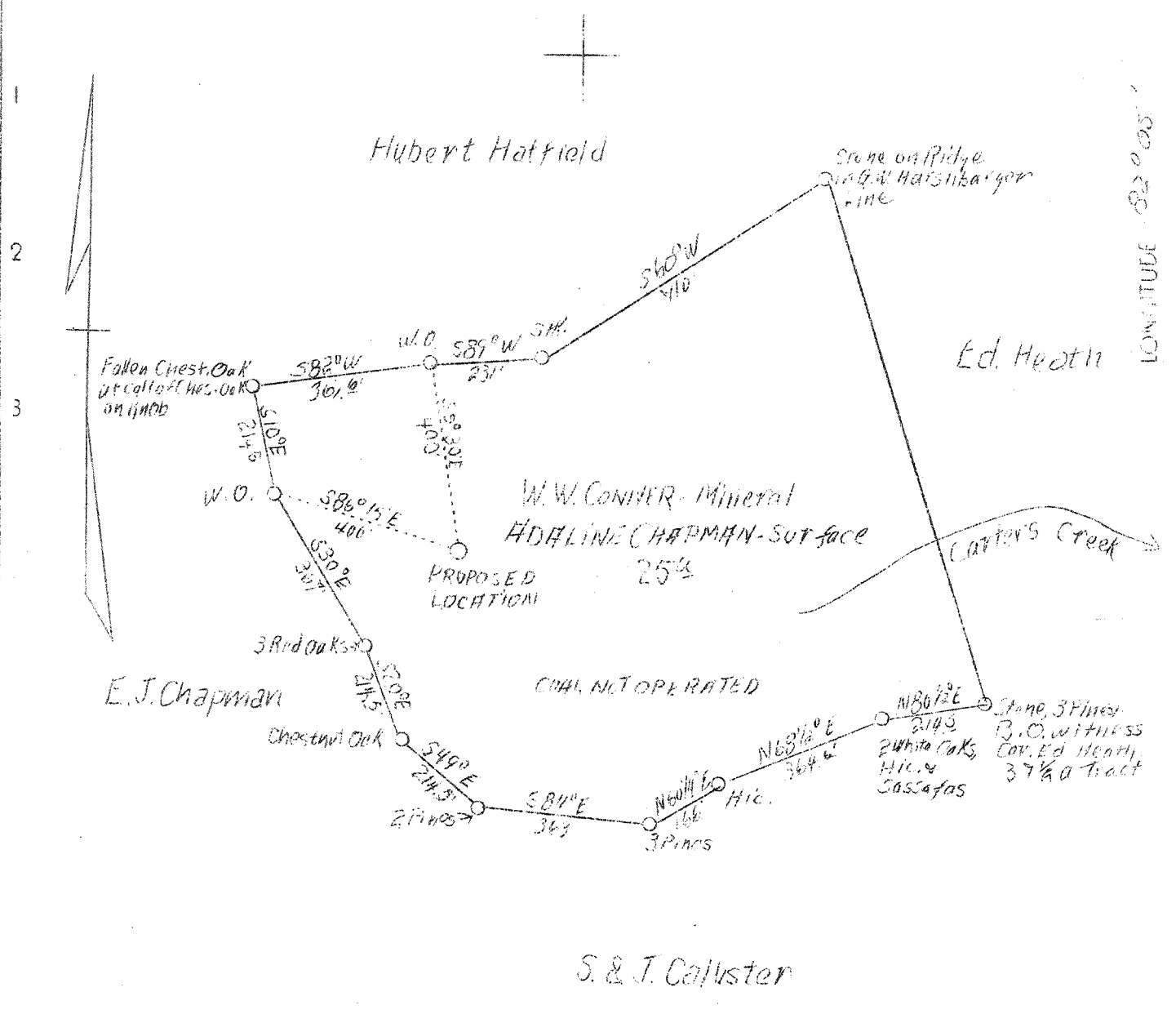


W

LATITUDE 38° 25'

LONGITUDE 82° 05'



New location

0.9 S
3.8 W
78

Company The Shale Gas Co.,
 Address Box 1606, Charleston, W.Va.
 Farm W. W. Conner
 (Adaline Chapman-Surface)
 Acres 25
 Well (Farm) No. One
 Serial No. Conner #1
 Elevation 908 (Spirit Level)
 Quadrangle Milton N.W. C
 County Cabell
 District Grant
 Engineer William D. Gravely
 Eng. Reg. No. -
 Date May 27, 1938
 Scale 1" = 20 po. or 330'

STATE OF WEST VIRGINIA
 Department of Mines
 OIL & GAS DIVISION
 Charleston

WELL LOCATION MAP
 File No. Cab-319

X Denotes location of well on U. S. Topographic Maps, scale 1 to 62,500, latitude and longitude lines being represented by border lines as shown.

- Denotes one inch spaces on border line of original tracing.

6-6 207

WEST VIRGINIA DEPARTMENT OF MINES

OIL & GAS DIVISION

WELL RECORD

Permit No. Cab-319

Gas Well

Milton N. W. Quad.

CASING & TUBING

Company	Shale Gas Co.	
Address	Box 1606, Charleston, W. Va.	
Farm	Adaline Chapman ACRES 25	
Well No.	One ELEV. 908	
District	Grant County Cabell	
Surface	Adeline Chapman, Milton, W. Va.	
Mineral	J. H. Harshbarger, Milton, W. Va.	CASING CEMENTED:
Drilling commenced	August 8, 1938	Size Feet Date
Drilling completed	Oct. 2, 1938	10" 20 -
Date shot	Oct. 3, 1938	8-1/4 618
Volume	115,000 c. f.	6-5/8 2097 left in
Rock Pressure	230 lbs. hrs.	well 20'-10"
Water	-	6-5/8 2097

Formation Color ^{Har}/₅ TOP Base Result Formation Color ^{Har}/₅ TOP Base Result

Formation	Color	^{Har} / ₅	TOP	Base	Result	Formation	Color	^{Har} / ₅	TOP	Base	Result
Sand				17							
Blue Slate			17	30							
Red Rock			105	115							
Blue Slate			115	200							
Red Rock			200	220							
Blue Slate			220	270							
Red Rock			270	280							
White Sand			280	320							
Blue Slate			320	430							
Red Rock			430	460							
Blue Slate			460	590							
White Sand			590	610							
Black Slate			610	630							
Blue Slate			630	820							
Salt Sand			820	910							
Slate & Shells			910	1037	90						
Sand			1037	1085							
Slate & Shells			1085	1372							
Sand			1372	1382							
Slate & Shells			1382	1440							
Water Sand			1440	1590							
Slate & Shells			1590	1705							
Maxton Sand			1705	1720							
Slate			1720	1730							
Little Lime			1730	1752							
Pencil Cave			1752	1755							
Big Lime			1755	1936							
Slate & Shells			1936	1995							
Big Injun Sand			1995	2065							
Slate & Shells			2065	2359							
Slate			2359	2369							
Slate & Shells			2369	2486							
Brown Shale			2486	2491							
Berea Grit			2491	2506							
Brown Shale			2506	2536							
White Slate			2536	2760							
Line Shell			2760	2821							
Light Shale			2821	3210							
White Slate			3210	3371							
Brown Shale			3371	3402							
White Slate			3402	3463							
Brown Shale			3463	3558							
White Slate			3558	3573							
Brown Shale			3573	3647							
White Slate			3647	3662							
Brown Shale			3662	3705							
White Slate			3705	3748							