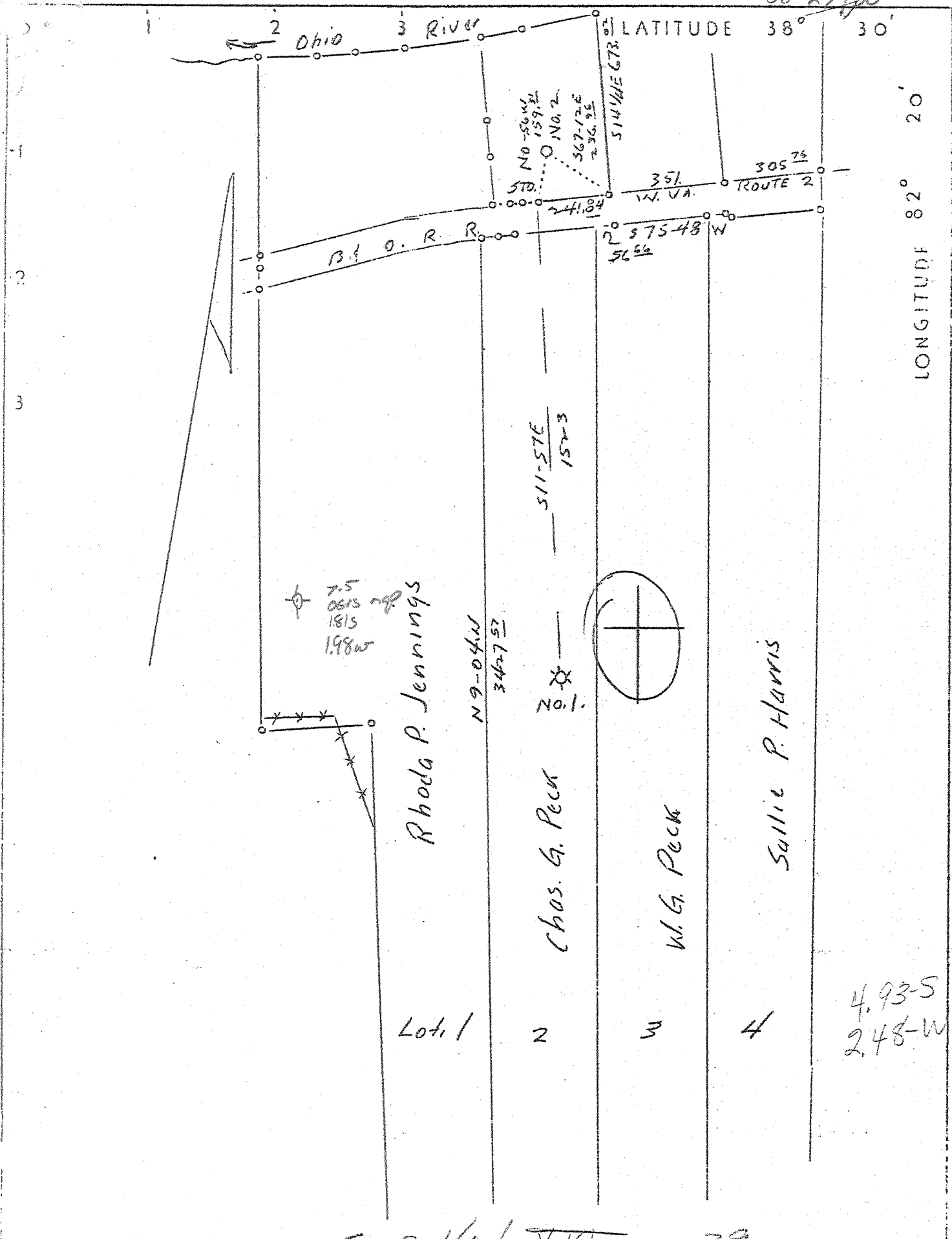


38 27 00



see Vol XVI p. 39

Company Charles G. Peck
 Address Ceredo, W. Va.
 Farm Peck Heirs
 Tract Two
 Acres 31.5
 Well (Farm) No. Two
 Serial No. Two
 Elevation (SP) 560 *Gideon Qual.*
 Quadrangle *W.C.*
 County Cabell
 District *GIDEON DIST*
 Engineer G. C. Ewing
 Engineer Reg. No. 309
 Date July 1, 1938
 Scale 1" = 400'

STATE OF WEST VIRGINIA
 Department of Mines
 OIL & GAS DIVISION
 Charleston

WELL LOCATION MAP

File No. CAB-325

x Denotes location of well on U. S. Topographic Maps, scale 1 to 62,500, latitude and longitude lines being represented by border lines as shown.

- Denotes one inch spaces on border line of original tracing.

No sample 3-6-205 Deep Well

WEST VIRGINIA DEPARTMENT OF MINES

Oil & Gas Division

WELL RECORD

Permit No. Cat-325

Gas Well

Gayandot Quad.

Casing & Tubing

Company C. C. Peck
 Address -
 Farm Peck Heirs ACRES -
 Well No. Two ELEV. 560'
 District **Gideon** - Cabell County
 Surface & Mineral Peck Heirs, Huntington, W. Va.
 Drilling commenced Sept. 2, 1938
 Drilling completed Oct. 15, 1938
 Date shot 10-15-38 - depth 3035'
 Open Flow 10/10ths Water in 2-inch
 Volume 150,720 c.f.
 Rock Pressure -
 Water -

10 78-1
 6-5/8 1457
 Liners Used
 6-5/8 422' seamless
 pipe on bottom. Steel
 shoe on bottom of 6-5/8

Formation Color ^{Has} TOP Base Result				Formation Color ^{Has} TOP Base Result			
Surface		0	73	White Slate		1952	1974
Sand, Rock		73	97	Brown Shale		1974	2007
Black Slate & Red R.		97	105	Lime Shell		2007	2012
Slate		105	203	Brown Shale		2012	2062
Sand		203	220	White Slate		2060	2396
Slate		220	275	Brown Shale		2395	2435
Sand		275	425	White Slate		2435	2509
Slate		425	450	Brown Shale		2509	2610
Sand		450	472	White Slate		2610	2640
Black Slate		472	497	Brown Shale		2640	2690
Sand		497	510	Slate & Shale		2690	2710
Slate		510	530	Brown Shale		2710	2732
Gas Sand		530	590	Slate		2732	2744
Slate		590	688	Brown Shale		2744	2845
Sand		688	703	White Slate		2845	2920
Black Slate		703	830	Slate & Shale		2920	2940
Sand		830	870	White Slate		2940	3035
Slate		870	895	Brown Shale		3035	3052
Sand		895	925	Corniferous Lime		3052	
Slate & Shells		925	943				
Maxton Sand		943	1034	Bottom of Hole		3052'	
Slate		1034	1095				
Red Rock		1095	1100				
Sand		1100	1120				
Little Lime		1120	1135				
Pencil Cave		1135	1140				
Big Lime		1140	1280				
Sand		1280	1291				
Slate		1291	1293				
Keener Sand		1293	1305				
Slate		1305	1345				
Big Injun Sand		1345	1419				
Slate		1419	1445				
Spraw Sand		1445	1453				
Slate		1453	1455				
Lime Shell		1455	1462				
Slate		1462	1600				
Slate & Shells		1600	1680				
Slate		1680	1718				
Shells		1718	1812				
Sandy Shell		1812	1822				
Slate & Shells		1822	1885				
Slate		1885	1898				
Brown Shale		1898	1923				
Berea Brit SLM		1923	1935				
White Slate		1935	1945				
Shell		1945	1952				

1345
 560
 - 785

Abd 3052

