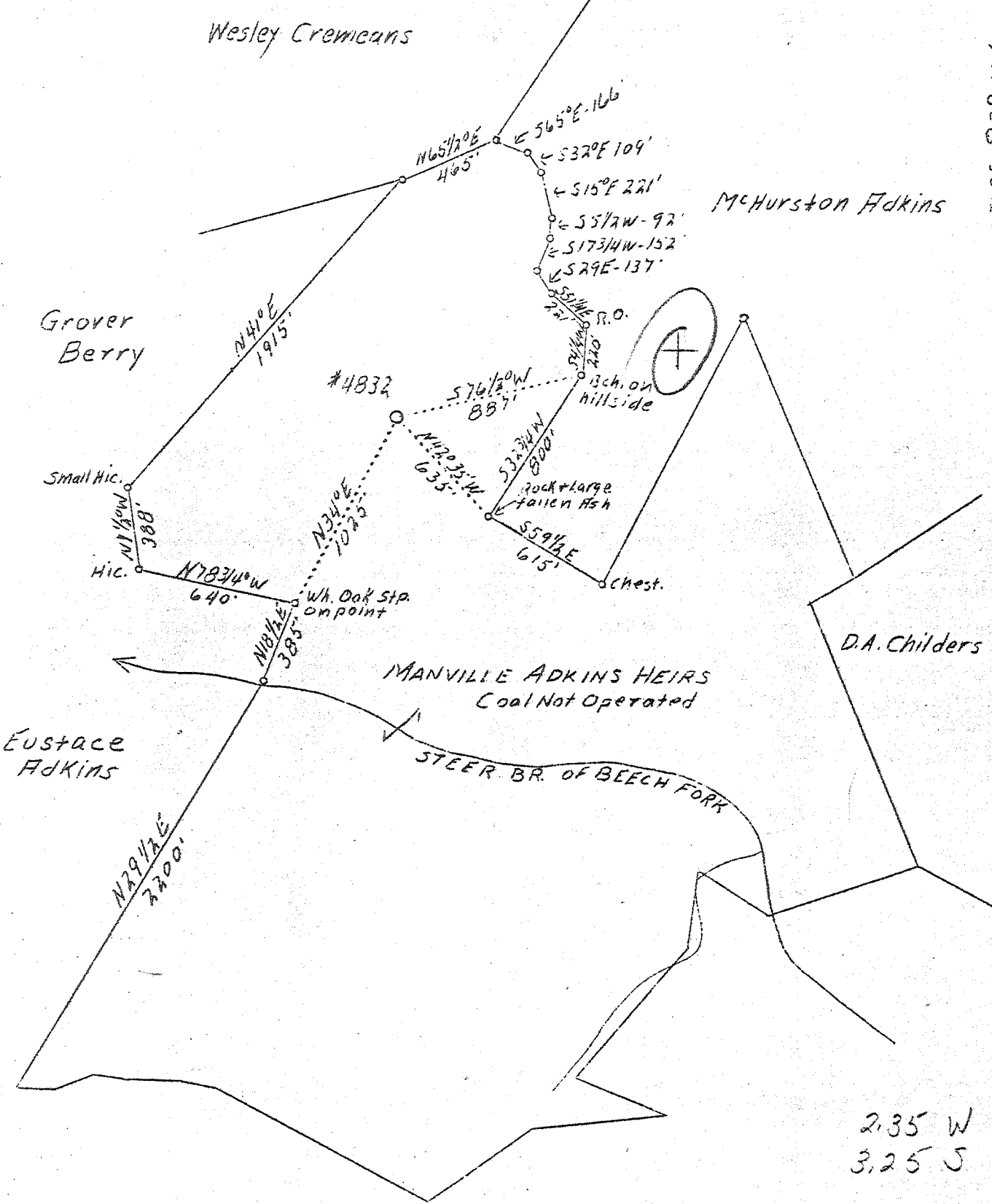


LATITUDE 38° 20'

LONGITUDE 82° 5'



2.35 W
3.25 S

New Location

See Vol. XVI, p. 41

| | | |
|-----------------|-----------------------|---|
| Company | United Fuel Gas Co. | STATE OF WEST VIRGINIA Department of Mines OIL & GAS DIVISION Charleston WELL LOCATION MAP File No. <u>Cab-341</u> x Denotes location of well on U. S. Topographic Maps, scale 1 to 62,500, latitude and longitude lines being represented by border lines as shown. - Denotes one inch spaces on border line of original tracing. |
| Address | Charleston, W. Va. | |
| Farm | Manville Adkins Heirs | |
| Acres | 312 | |
| Lease No. | 24291 | |
| Well (Farm) No. | 1 | |
| Serial No. | 4832 | |
| Elevation | 1060 - Barometer | |
| Quadrangle | Guyandot SE | |
| County | Cabell | |
| District | McComas | |
| Engineer | G. A. Cunningham | |
| Eng. Reg. No. | 659 | |
| File No. | 26-53 | |
| Date | March 13, 1939 | |
| Scale | 1" - 660' | |

No samples 3-6-2006 Dead Well

WEST VIRGINIA DEPARTMENT OF MINES
OIL & GAS DIVISION
WELL RECORD

Permit No. Cab-341
Guyandot Quad.

Gas Well
CASING & TUBING

Company United Fuel Gas Co.
Address Box 1256, Charleston, W. Va.
Farm Manville Adkins Hrs. ACRES 312
Location Steer Branch of Beech Fork
Well No. 4832 ELEV. 1060
District McComas - Cabell County
Surface & Mineral Boyd Adkins, et al, Branchland, W.Va.
Commenced May 18, 1939
Completed July 21, 1939
Date shot 7/21/39 - Depth 3036
Volume Gas Well 212 Mcb.
Rock Pressure -
Water -

| | | |
|-------|------|------|
| 8-1/4 | 257 | 257 |
| 6-5/8 | 2048 | 2048 |
| 3 | 3917 | 3917 |

Formation Color ^{Hor} TOP Base Result Formation Color ^{Hor} TOP Base Result

| | | | | | | | | | |
|------------------|--|------|------|--|--|--|--|--|--|
| Surface | | 0 | 14 | | | | | | |
| Sand | | 14 | 34 | | | | | | |
| Slate | | 34 | 160 | | | | | | |
| Sand | | 160 | 200 | | | | | | |
| Slate | | 200 | 260 | | | | | | |
| Sand | | 260 | 305 | | | | | | |
| Slate | | 305 | 620 | | | | | | |
| Sand | | 620 | 780 | | | | | | |
| Slate | | 780 | 840 | | | | | | |
| Sand | | 840 | 960 | | | | | | |
| Slate | | 960 | 985 | | | | | | |
| Sand | | 985 | 1020 | | | | | | |
| Slate | | 1020 | 1030 | | | | | | |
| Sand | | 1030 | 1095 | | | | | | |
| Slate & Shells | | 1095 | 1215 | | | | | | |
| Sand | | 1215 | 1260 | | | | | | |
| Slate | | 1260 | 1323 | | | | | | |
| Salt Sand | | 1323 | 1476 | | | | | | |
| Slate | | 1476 | 1486 | | | | | | |
| Sand | | 1486 | 1560 | | | | | | |
| Slate | | 1560 | 1640 | | | | | | |
| Red Rock | | 1640 | 1650 | | | | | | |
| Slate | | 1650 | 1680 | | | | | | |
| Little Lime | | 1680 | 1705 | | | | | | |
| Pencil Cave | | 1705 | 1715 | | | | | | |
| Big Lime | | 1715 | 1880 | | | | | | |
| Slate | | 1880 | 1885 | | | | | | |
| Sand | | 1885 | 1895 | | | | | | |
| Red Rock | | 1895 | 1925 | | | | | | |
| Slate & Shells | | 1925 | 1970 | | | | | | |
| Injun Sand | | 1970 | 2030 | | | | | | |
| Black Lime | | 2030 | 2107 | | | | | | |
| Slate & Shells | | 2107 | 2208 | | | | | | |
| Shell | | 2208 | 2238 | | | | | | |
| Slate & Shells | | 2238 | 2530 | | | | | | |
| Brown Shale | | 2530 | 2551 | | | | | | |
| Berea | | 2551 | 2561 | | | | | | |
| White Slate | | 2561 | 2600 | | | | | | |
| Shell | | 2600 | 2670 | | | | | | |
| Slate | | 2670 | 3024 | | | | | | |
| Brown Shale | | 3024 | 3119 | | | | | | |
| Slate | | 3119 | 3245 | | | | | | |
| Brown Shale | | 3245 | 3600 | | | | | | |
| White Slate | | 3600 | 3823 | | | | | | |
| Brown Shale | | 3823 | 3917 | | | | | | |
| Corniferous Lime | | 3917 | | | | | | | |
| Total Depth | | 3917 | | | | | | | |

Steel line measurement

A61