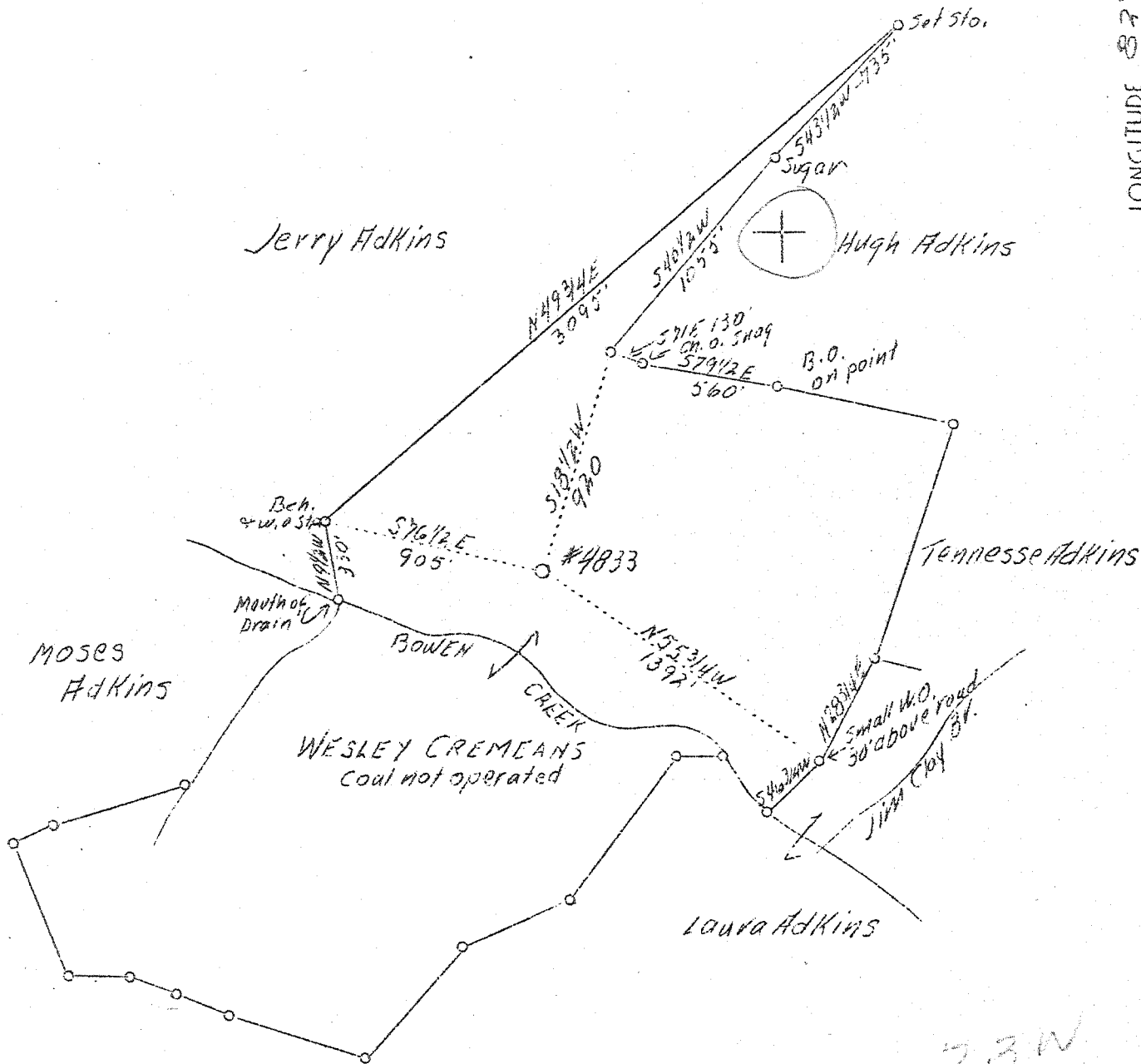


LATITUDE 38° 20'

LONGITUDE 87° 16'



2.3W  
2.835

New location

See Vol XVI p 42

Company	United Fuel Gas Co.
Address	Charleston, W. Va.
Farm	Wesley Cremeans
Acres	136
Lease No.	39137
Well (Farm) No.	One
Serial No.	4833
Elevation	660 - Barometer
Quadrangle	Guyandot
County	Cabell
District	McComas
Engineer	G. A. Cunningham
Eng. Reg. No.	659
File No.	26-55
Date	March 17, 1939
Scale	1" - 660'

STATE OF WEST VIRGINIA  
 Department of Mines  
 OIL & GAS DIVISION  
 Charleston

WELL LOCATION MAP

File No. C26-34A

x Denotes location of well on U. S. Topographic Maps, scale 1 to 62, 500, latitude and longitude lines being represented by border lines as shown.

- Denotes one inch spaces on border line of original tracing.

No samples 3-6 206 Deep Well

WEST VIRGINIA DEPARTMENT OF MINES

OIL & GAS DIVISION

WELL RECORD

Gas Well

Permit No. Cab-342

Guyandot Quad.

CASTING & TUBING

Company	United Fuel Gas Co.	10	20
Address	Box 1256, Charleston, W. Va.	8-1/4	452
Farm	Wesley Cremons ACRE 136	6-5/8	1632
Location	Bowen Creek		
Well No.	4833 ELEV. 660		Packer - Hook Wall
District	McComas - Cabell County		Size - 3" x 6-5/8"
Surface & Mineral	Wesley Cremons, Branchland, W.Va.		Depth set - 2205
Drilling commenced	March 28, 1939		
Drilling completed	May 18, 1939		
Date shot	May 19, 1939 - Depth 2927-3461		
Open Flow	84/10ths Water in 2 inch		
Volume	386,000 c.f.		
Rock Pressure	400 lbs. 48 hrs.		
Fresh Water	313		
Salt Water	970		

Formation Color <sup>Har</sup> 5 Top Base Result Formation Color <sup>Har</sup> 5 Top Base Result

Surface		0	10						
Sand		10	50						
Slate		50	234						
Sand		234	325	W 310'					
Slate		325	456						
Sand		456	550						
Slate		550	645						
Sand		645	679						
Slate		679	685						
Sand		685	712						
Slate		712	781						
Sand		781	800						
Slate		800	825						
Sand		825	855						
Slate		855	882						
Salt Sand		882	1185	W 970					
Slate		1185	1213						
Red Rock		1213	1221						
Slate		1221	1265						
Red Rock		1265	1273						
Slate		1273	1300						
Big Lime		1300	1500						
Slate		1500	1510						
Keoner Sand		1510	1555						
Shells & Slate		1555	1565						
Injun Sand		1565	1610	Show Oil & Gas @ 1600'					
Slate & Shells		1610	1625						
Black Lime		1625	1660						
Slate & Shells		1660	2110						
Brown Shale		2110	2124						
Berea Sand		2124	2138						
Slate & Shells		2138	2180						
Lime Shell		2180	2205						
Slate & Shells		2205	2623						
Brown Shale		2623	2740						
Gray Shale		2740	2848						
Brown Shale		2848	2890						
Slate		2890	2940						
Brown Shale		2940	3170	Show Gas @ 2967					
White Slate		3170	3255						
Brown Shale		3255	3270						
White Slate		3270	3395						
Brown Shale		3395	3461	Show of gas @ 3400					
Corniferous Lime		3461	3462						
Total Depth			3462						

*Ad*