

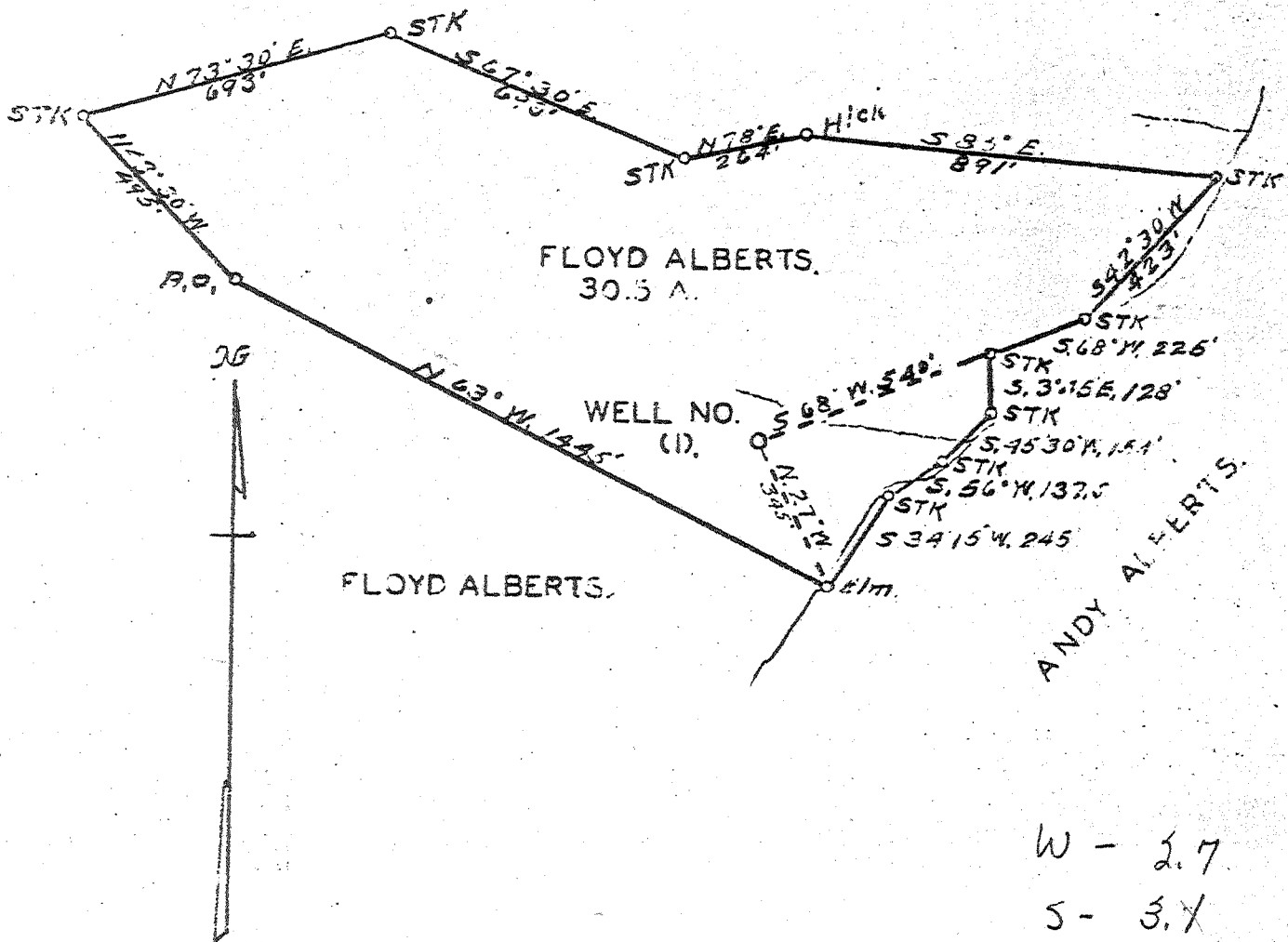
Latitude 38° 22' 30" 25'

75
0815 rap
08 W
405

Longitude 82° 13'

0
1
2
3

J. W. HOLLEY,



W - 2.7
S - 3.4
08

New Location
Drill Deeper
Abandonment

see Vol. XVI, p 33

Company	G. L. MEABON (TRUSTEE)
Address	HUNTINGTON W. VA.
Farm	FLOYD ALBERTS
Tract	ONE Acres 30.5 Lease No. ONE
Well (Farm) No.	ONE Serial No.
Elevation (Spirit Level)	615.0'
Quadrangle	GUYANDOTTE, <i>EF EC</i>
County	CABELL District. <i>Barbourville</i>
Engineer	<i>J. A. Ross</i>
Engineer's Registration No.	
File No.	Drawing No.
Date	SEPT 25, 1940. Scale 1" = 400'

STATE OF WEST VIRGINIA
DEPARTMENT OF MINES
OIL AND GAS DIVISION
CHARLESTON

WELL LOCATION MAP
FILE NO. CAB-396

+ Denotes location of well on United States Topographic Maps, scale 1 to 62,500, latitude and longitude lines being represented by border lines as shown.

- Denotes one inch spaces on border line of original tracing

W. Sample 6-6-206 Deep Well

WEST VIRGINIA DEPARTMENT OF MINES
OIL & GAS DIVISION
W E L L R E C O R D

Permit No. Cab-396
Guyandotte Quad.

Gas Well

Company	Alberts Farm Gas Company	10	21	21
Address	2566 First Ave., Huntington, W. Va.	8-1/4	420	None
Farm	Floyd Alberts ACRES 78	6-5/8	1786	1786
Location	Hollans Creek of Guyan River	4-7/8	1330	1330
Well No.	ELEV. -	1 sph.	3560	3560
District	Barboursville Cabell County			
Surface Address	Floyd & Minnie Alberts, Barboursville, W. Va.	Packer - Bottom Hole Rubber		
Mineral	-	Size -		
Commenced	-	Depth set -		
Completed	-			
Shot	2/4/41 - depth 505			
Open Flow	180 M.			
Volume	-			
Rock Pressure	550 lbs. - hrs.			
Fresh Water	Shells 80			
Salt Water	Salt Sand 620			

Red Clay	1	80	W 80	Brown Shale	3055	3160
Shell	80	85	2 BPH	White Slate	3160	3170
Red Rock	85	225		Brown Shale	3170	3290
Shells	225	285		White Slate	3290	3318
Red Rock	285	375		Lime - Hard	3318	3520
Sand	375	410		Brown Shale	3520	3560
Slate	410	560		Corniferous Lime	3560	
Salt Sand	560	650		Total Depth		3560
Slate	650	660				
Sand	660	750				
Slate&Shells	750	1045				
Salt Sand	1045	1070				
Slate	1070	1115				
Sand	1115	1130				
Lime	1130	1170	Hard Sandy Lime 1140			
Sand	1170	1335				
Slate	1335	1360				
Sand	1360	1370				
Slate	1370	1390				
Little Lime	1390	1430				
Pencil Cove	1430	1440				
Big Lime	1440	1590	Gas, small show 1500 - Hole full water			
Slate	1590	1600				
Injun	1600	1635				
Slate	1635	1645				
Sand	1645	1660				
Slate	1660	1665				
Sand	1665	1750				
Slate	1750	1770				
Lime	1770	1800				
Slate	1800	2100				
Lime EXT. Hd.	2100	2130				
Slate&Shells	2130	2214				
Salt Slate	2214	2239				
Coffee Shale	2239	2252				
Berea	2252	2256	Gas 2/10 Water -/1" at 2252'			
Slate & Shells	2256	2280				
Red Rock	2280	2300				
Lime	2300	2330				
Slate&Shells	2330	2370				
Brown Shale	2370	2375				
Sandy Slate	2375	2385	Oil: Small show 2375			
Slate&Shells	2385	2775				
Brown Shale	2775	2800				
Slate	2800	2973				
Brown Shale	2975	3015				
White Shale	3015	3055	Shot 505 with 3500# 80% High-Velocity Gelatin			