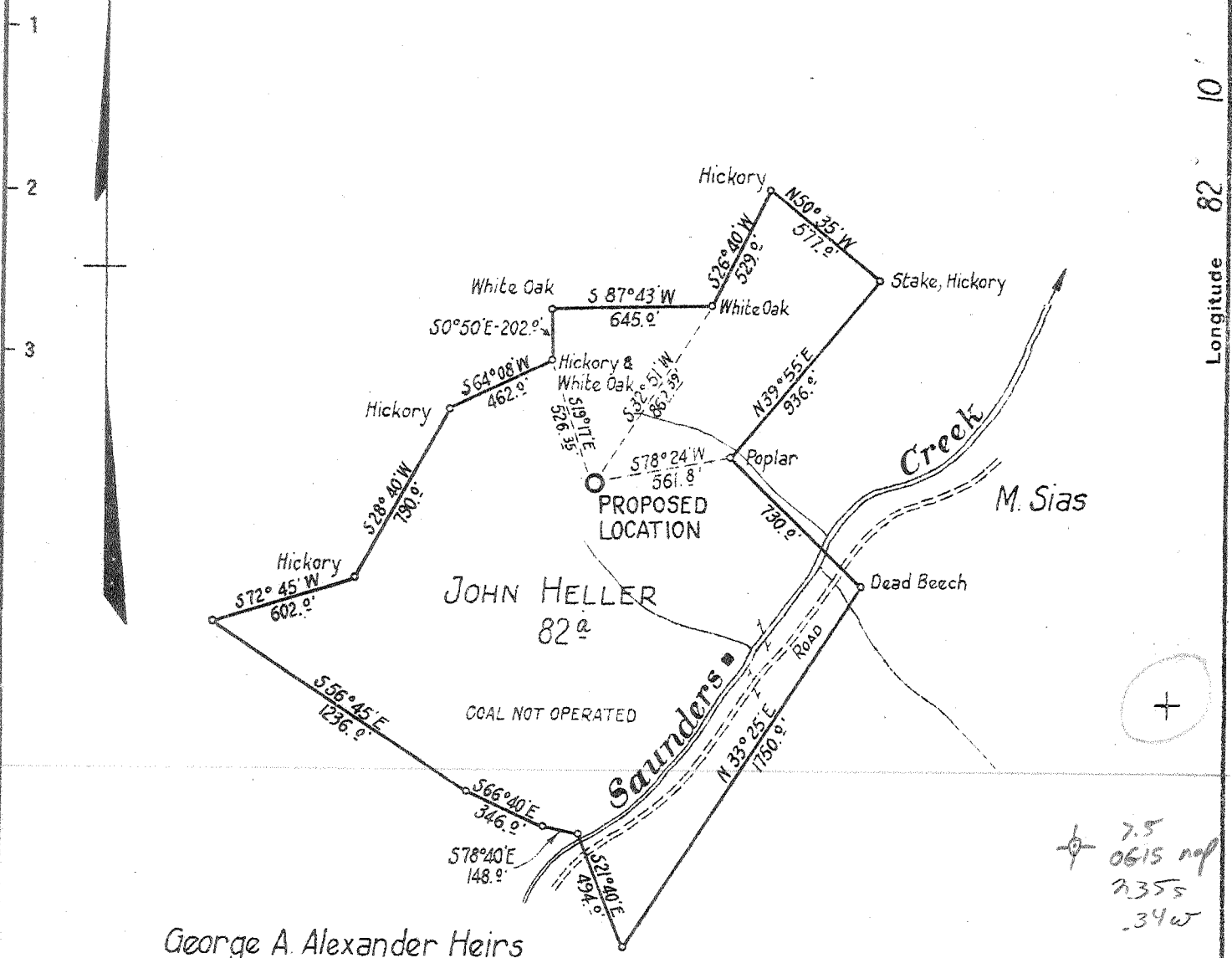
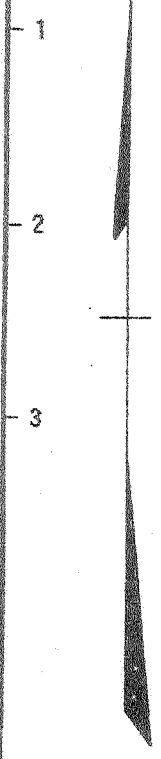


m

38° 27' 30"

Latitude 38 30'



George A. Alexander Heirs

7.5
0615 nnp
2355
.34w

W .35
S - 5.35

NOTE: No buildings within 300 feet of Location

New Location
Drill Deeper
Abandonment

W.S.G.

Company	MONICKEL GAS COMPANY		
Address	401 UNION BLDG., CHARLESTON, W.VA.		
Farm	JOHN HELLER		
Tract	Acres	82	Lease No.
Well (Farm) No.	ONE	Serial No.	M53
Elevation (Spirit Level)	748.16' GROUND		
Quadrangle	MILTON N.W.		
County	CABELL	District	GRANT
Engineer	L. B. DORSEY		
Engineer's Registration No.	402		
File No.	3	Drawing No.	WO 41
Date	APRIL 18, 1941. Scale: 1 INCH = 660 FEET		

STATE OF WEST VIRGINIA
DEPARTMENT OF MINES
OIL AND GAS DIVISION
CHARLESTON

WELL LOCATION MAP
FILE NO. CAB-403

+ Denotes location of well on United States Topographic Maps, scale 1 to 62,500, latitude and longitude lines being represented by border lines as shown.

- Denotes one inch spaces on border line of original tracing.

WEST VIRGINIA DEPARTMENT OF MINES
OIL & GAS DIVISION
W E L L R E C O R D

Permit No. Cab-403
- Quad.

Gas Well

		CASING & TUBING	
Company	West Virginia Gas Corp. Monickel Gas Co.	13-3/8	9
Address	Box 404, 401 Union Bldg., Charleston, W.Va.	10-3/4	670
Farm	John Holler ACRES 82	8-5/8	1652
Location	Saunders Creek	7	1975-3
Well No.	1 (Serial #M53) ELEV. 748.16		
District	Grant - Cabell County		Coal at 680'
Surface & Mineral	John Heller, 3142 Oakland Ave., Catlettsburg, Ky.		
Commenced	4/26/41		
Completed	6/17/41		
Open Flow	5/10ths W in 1" & 1/10 W in 1"		
Volume	23,560 c.f. Big Lime 10,530 c.f. Berea		
Rock Pressure	-		
Fresh Water	65, 275, 430 - 790 Hole full 840		
Salt Water	Hole full 1865		

Surface	0	4
Sand	4	36
Red Rock	36	42
Sand	42	90
Red Rock	90	105
Blue Mud	105	140
Slate	140	200
Sand	200	240
Slate	240	265
Sand	265	340
Slate&Shells	340	410
Sand	410	478
Red Rock	478	490
Slate	490	581
Red Rock	581	590
Slate&Shells	590	675
Lime Shell	675	680
Coal	680	682
Slate	682	705
Sand	705	740
Slate	740	773
Sand	773	845
Slate	845	880
Sand	880	930
Slate Shells	930	1275
Gas Sand	1275	1290
Black Slate	1290	1300
Salt Sand	1300	1420
Slate Shells	1420	1575
Maxton Sand	1575	1605
Black Lime	1605	1620
Slate	1620	1628
Big Lime	1628	1795
Keener Sand	1795	1850
Slate	1850	1856
Injun Sand	1856	1945
Slate&Shells	1945	2295
Lime Shell	2295	2310
Slate&Shells	2310	2390
Brown Shale	2390	2394
Berea Sand	2394	2406
Slate&Shells	2406	2409
Total Depth		2409

1300
748
552

1856
2394
1108

Water to drill with at 65'
3 bailers of water per hour at 275
2 bailers of water per hour at 430
3 bailers of water per hour at 790
Hole full of water at 840
Water sand 835-845
Hole full water 1865
Gas at 1688-1694 test 5/10 W 1" (23,580 CF)
Gas at 2395 test 1/10 W 1" (10,530 CF)

Halliburton Steel Line run 1652 (8-5/8 Csg.)
do 1976 (7" ")
do 2394 (Berea)