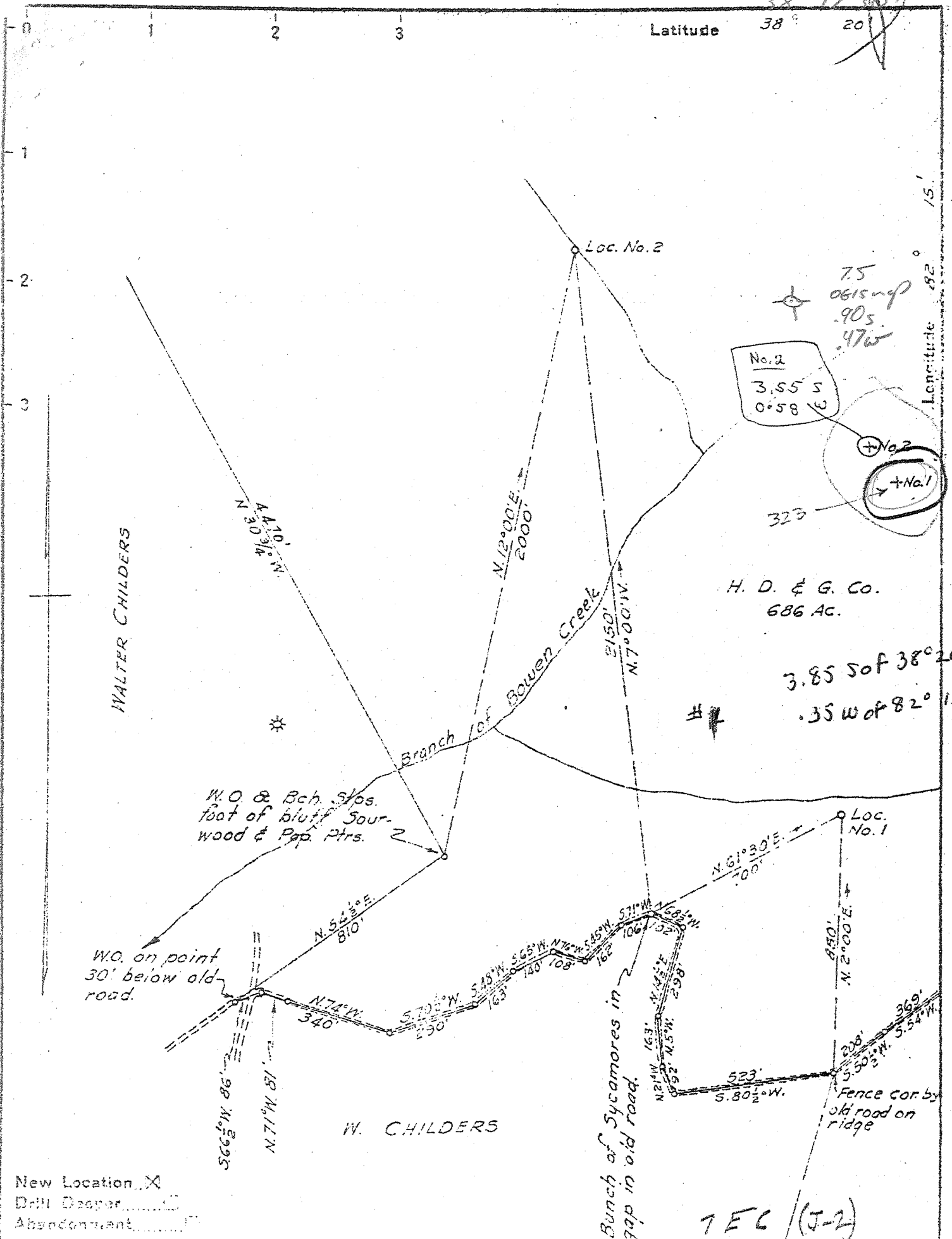


38° 17' 30" N
 82° 15' W

Latitude 38 20



No. 2
 3.55 S
 0.58 E

H. D. & G. Co.
 686 AC.

3.85 S of 38° 20'
 .35 W of 82° 15'

WALTER CHILDERS

W.O. & Bch. Sps.
 foot of bluff Saur-
 wood & Pop. Ptrs.

W.O. on point
 30' below old
 road.

W. CHILDERS

Bunch of Sycamores in
 gap in old road.

Fence cor by
 old road on
 ridge

New Location X
 Drill Deeper
 Abandoned

TEC (J-2)

Company G. H. SUMMERSON
 Address HAMLIN, W. VA.
 Farm HUNTINGTON DEV. & GAS CO.
 Tract _____ Acres 5.96 Lease No. _____
 Well (Farm) No. 1 & 2 Serial No. _____
 Elevation (Spirit Level) No. 1 = 780' No. 2 = 860'
 Quadrangle GUYANDOT SE
 County CABELL District MCOMAS
 Engineer E. B. Curing
 Engineer's Registration No. 309
 File No. _____ Drawing No. _____
 Date 4-22-44 Scale 1" = 400'

STATE OF WEST VIRGINIA
 DEPARTMENT OF MINES
 OIL AND GAS DIVISION
 CHARLESTON

WELL LOCATION MAP
 FILE NO. CAB-423 #1 Deep
~~643-424 #2~~

+ Denotes location of well on United States
 Topographic Maps scale 1 to 62,500, lat-
 itude and longitude lines being represented
 by border lines as shown.

- Denotes one inch spaces on border line
 of original tracing.

117 samples 6-6 206 Deep Well

WEST VIRGINIA DEPARTMENT OF MINES
OIL & GAS DIVISION
W E L L R E C O R D

Gas Well
CASING & TUBING

Permit No. Cab 423	G.H. Summerson			
Guyandotte Quad.	Hamlin, W. Va.	10	22	22
Company				
Address	Htg. Dev. & Gas Co., Acres 686	8 1/2	269'9	263'9
Farm	Bowen Creek	6 5/8	1723	1723
Location	1 Elev. 780	Liners used		
Well No.	McComas Cabell County	5 3/16	630	630
District				
Surface				
Mineral	Htg. Dev. & Gas Co., Charleston, W. Va.			
Commenced	Sept. 11, 1944			Steel shoe Packer
Completed	Nov. 30, 1944			Size 7" OD
Date shot	12-1-44 Depth 2940 to 3560 with 4300 lbs. Depth 1723'			
	Gelatin			
Open flow	4/10ths W in 2"			No coal
Volume	80,000 C F.			
Rock Pressure	300 lbs. 48 hrs.			
Fresh Water	90'			
Salt Water	1900'; 1660'			

Clay		0	10	
Mud	Blue	10	60	
Sand		60	130	
Slate		130	260	
Sand		260	375	
Slate		375	425	
Sand		425	600	
Slate		600	655	
Sand		655	705	
Slate		705	790	
Sand		790	815	
Slate		815	915	
✓ Salt Sand		915	1190	275
Slate		1190	1225	
Red Rock		1225	1230	
Shell		1230	1240	
Red Rock		1240	1260	
Mud Blue	311	1260	1315	
✓ Maxon Sand		1315	1335	915 1500 135
✓ Little Lime		1335	1365	
✓ Slate - P. Cave		1365	1367	
✓ Big Lime		1367	1546	
✓ Keener Sand		1546	1566	
✓ Red Rock - Macclady		1566	1569	Gas show 1460
Shell		1569	1590	
✓ Injun Sand - 375		1590	1670	Gas show 1615
Slate		1670	1680	
Shells		1680	2160	1590 1500 51
✓ Shale, brown - Coffee Str.		2160	2175	
✓ Berea Sand		2175	2193	Gas 2178 4/10 1" 21 McG.
Slate		2193	2210	
Shell		2210	2250	
Slate		2250	2600	
Shale gray		2600	2675	
Shale brown - 441		2675	2725	
Slate		2725	2808	
Shale brown		2808	2830	
Slate		2830	2940	
Shale brown		2940	2990	
Slate		2990	3040	
Shale brown		3040	3285	Gas 3130 7/10 1" 20 McG.
Slate white		3285	3470	
Shell		3470	3475	
Shale gray		3475	3545	Gas 3480 show
Shale brown		3545	3560	
✓ Corniferous Lime			3560	

461

3560
780

2780