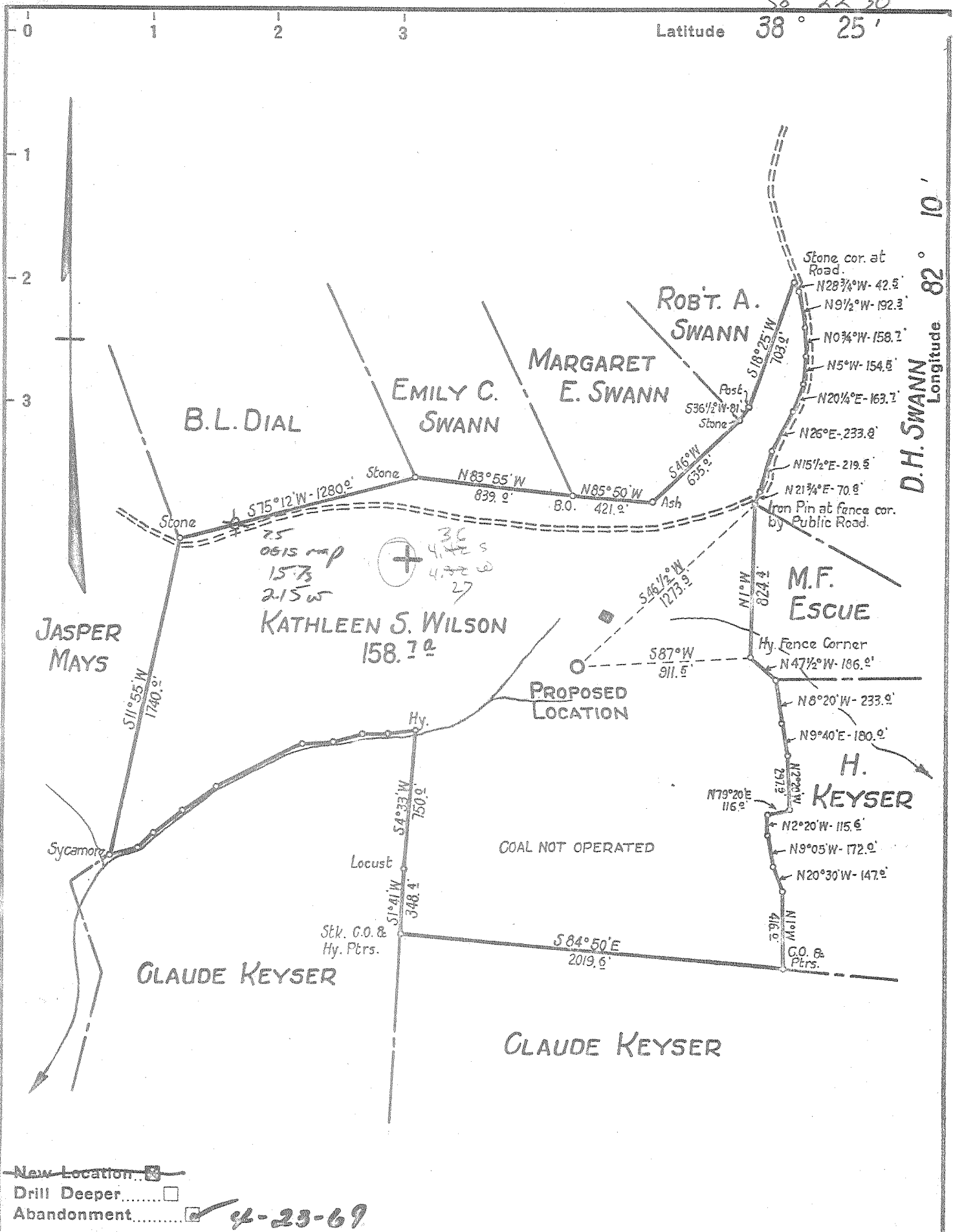


Latitude 38° 22' 30"  
38° 25'



New Location   
 Drill Deeper   
 Abandonment  4-23-69

Company **COMMONWEALTH GAS CORP.**  
**WEST VIRGINIA GAS CORPORATION**  
 Address **P.O. Box 1433 CHARLESTON 25, W.VA.**  
 Farm **KATHLEEN S. WILSON**  
 Tract \_\_\_\_\_ Acres **158.7** Lease No. **63**  
 Well (Farm) No. **1** Serial No. **535**  
 Elevation (Spirit Level) **824.6 GROUND.**  
 Quadrangle **MILTON S.W. 4 S 4.47 W 4.32**  
 County **CABELL** District **McCOMAS**  
 Engineer **W.S. GRAVELY**  
 Engineer's Registration No. \_\_\_\_\_  
 File No. \_\_\_\_\_ Drawing No. \_\_\_\_\_  
 Date **DEC. 26, 1945** Scale **1"=660'**

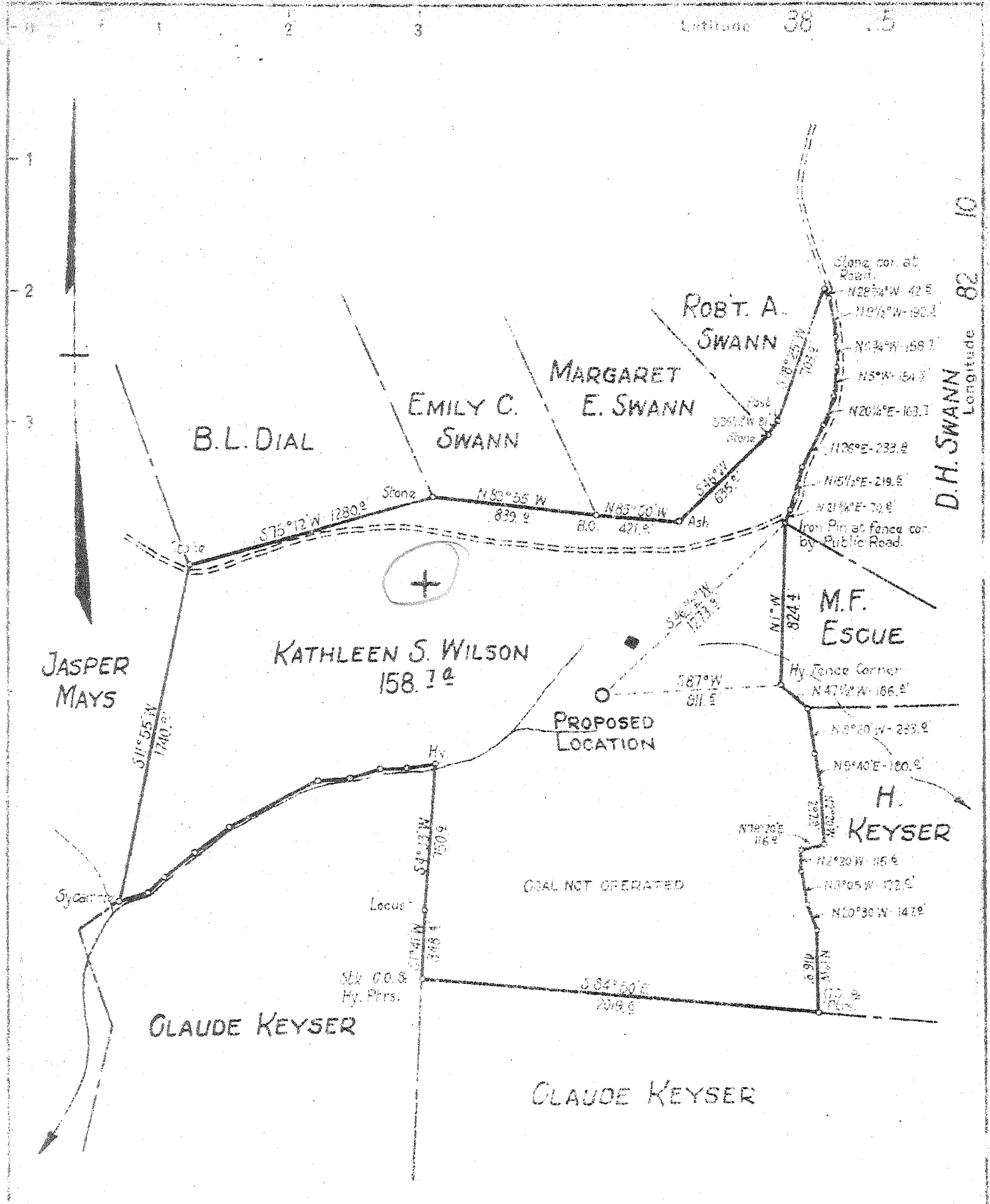
STATE OF WEST VIRGINIA  
 DEPARTMENT OF MINES  
 OIL AND GAS DIVISION  
 CHARLESTON

**WELL LOCATION MAP**  
 FILE NO. **CAB-435-P**

+ Denotes location of well on United States Topographic Maps, scale 1 to 62,500, latitude and longitude lines being represented by border lines as shown.

- Denotes one inch spaces on border line of original tracing.

Latitude 36 5



New Location.   
 Drill Deeper .....  
 Abandonment .....

Company	WEST VIRGINIA GAS CORPORATION		
Address	P.O. Box 1433 CHARLESTON 25, W.VA.		
Farm	KATHLEEN S. WILSON		
Tract	Acres	Lease No.	63
Well (Farm) No.	1	Serial No.	535
Elevation (Spirit Level)	824.6 GROUND.		
Quadrangle	MILTON S.W. 4 S 4.47 W 4.32		
County	CABELL District M <sup>c</sup> COMAS		
Engineer	W.S. GRAVELY		
Engineer's Registration No.			
File No.	Drawing No.		
Date	DEC. 26, 1945 Scale 1" = 660'		

STATE OF WEST VIRGINIA  
 DEPARTMENT OF MINES  
 OIL AND GAS DIVISION  
 CHARLESTON

WELL LOCATION MAP  
 FILE NO. CAB-435

+ Denotes location of well on United States Topographic Maps, scale 1 to 62,500, latitude and longitude lines being represented by border lines as shown.

- Denotes one inch spaces on border line of original tracing

WEST VIRGINIA DEPARTMENT OF MINES  
OIL & GAS DIVISION  
W E L L R E C O R D

Permit No. Cab 435		Gas Well
Milton Quad.		CASING & TUBING
Company	West Virginia Gas Corporation	
Address	P.O. Box 1433, Charleston 25, W.Va.	
Farm	Kathleen S. Wilson Acres 158.7	10    20    20
Location		8 1/2   580   185
Well No.	One serial No. 535 Elev. 824.6	7 OD 1977'4 1977'4
District	McComas Cabell County	
Surface	Kathleen S. Wilson, 1429 Stuart St. Not tubed	
	Huntington W.Va.	
Commenced	Jan. 12, 1946	
Completed	March 12, 1946	
Date shot	3-11-46 Depth 2975 to 3575	
	with 4000# gelatin	
Volume	Berea 27 MCF Brown Shale 146 MCF	
Rock Pressure	138 lbs. 48 hrs.	
Salt Water	1340 H.F.	

Red Rock	0	6	
Sand	6	45	
Red Rock	45	70	
Slate & Shells	70	95	
Red Rock	95	110	
Slate & Shells	110	230	
Red Rock	230	242	
Sand	242	282	
Slate & Shells	282	295	
Sand	295	332	
Red Rock	332	400	
Slate & Shells	400	532	
Sand	532	577	
Slate	577	581	
Sand	581	610	
Slate & Shells	610	670	
Sand	670	700	
Slate & Shells	700	760	
Sand	760	1000	
Slate & Shells	1000	1025	
Sand	1025	1115	
Slate & Shells	1115	1225	
Salt Sand	1225	1504	
Slate	1504	1550	
Maxon Sand	1550	1562	
Lime Black	1562	1581	
Slate	1581	1648	
Big Lime	1648	1824	
Keener Sand	1824	1888	
Injun Sand	1888	1955	
Slate	1955	1974	
Lime Black	1974	2052	
Slate & Shells	2052	2440	
Brown Shale	2440	2451	
Berea Grit	2451	2463	
Slate & Shells	2463	2860	
Brown Shale	2860	2950	
Slate	2950	3000	
Gray Shale	3000	3200	
Brown Shale	3200	3250	Gas 3265 3/10 W 2"
Gray Shale	3250	3390	Gas 3290 60/10 W 2"
Brown Shale	3390	3407	Gas 3321 20/10 W 2"
Gray Shale	3407	3418	Gas 3429 16/10 W 2"
Brown Shale	3418	3565	Gas 3575 9/10 W 2"
Slate	3565	3575	
TOTAL DEPTH		3575	

1504  
1225  
279

1725  
875  
850

3258  
825  
2433