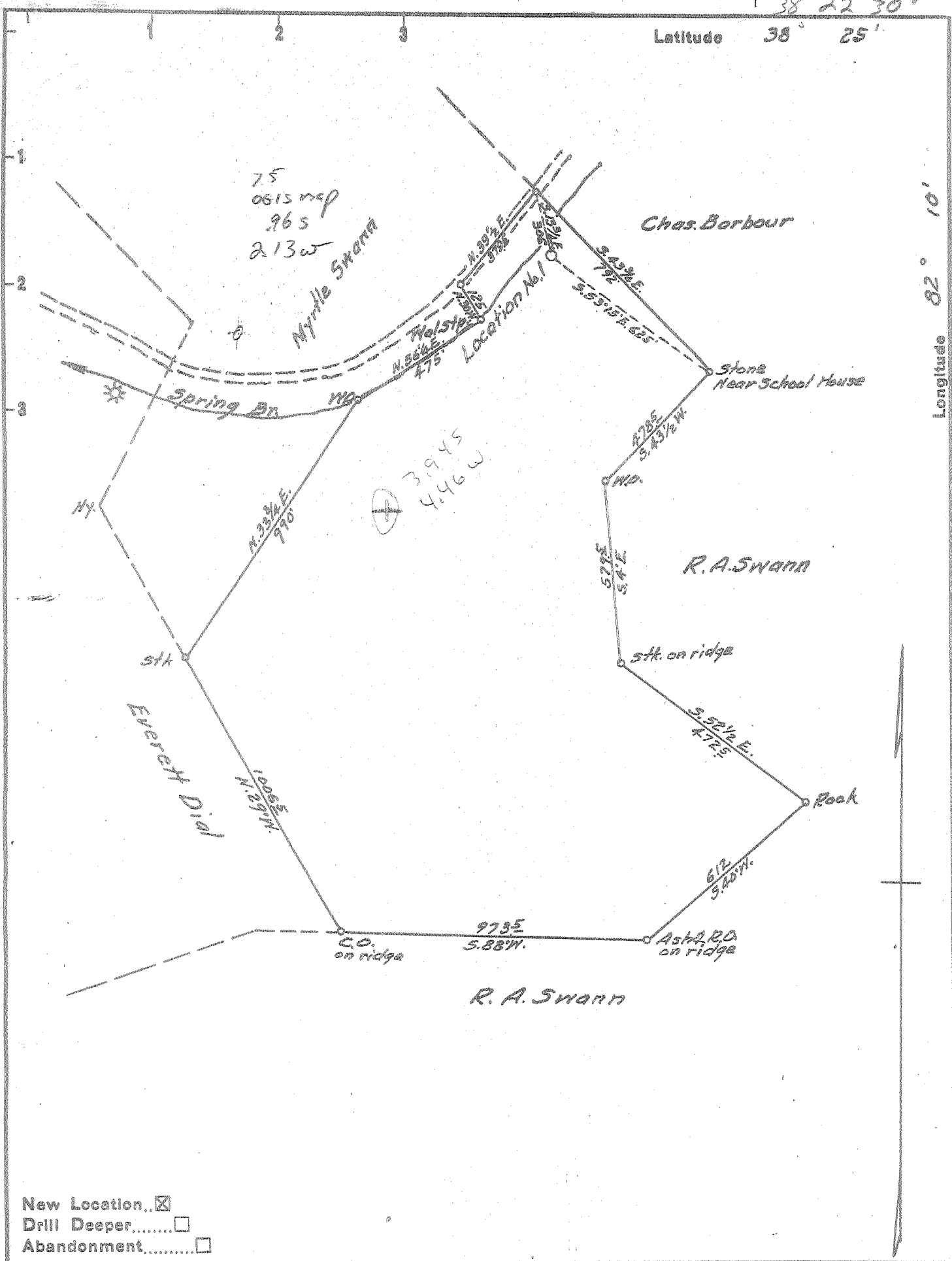


M 38° 22' 30"

Latitude 38° 25'

Longitude 82° 10'  
82° 12' 30"



New Location...   
 Drill Deeper.....   
 Abandonment.....

Company DENNIS M. ROY  
 Address HUNTINGTON, W.VA.  
 Farm HOMER B. SWANN, ET AL.  
 Tract \_\_\_\_\_ Acres 69 Lease No. \_\_\_\_\_  
 Well (Farm) No. 1 Serial No. \_\_\_\_\_  
 Elevation (Spirit Level) 640 — ?  
 Quadrangle MILTON W.C.  
 County CABELL District McCOMAS  
 Engineer G. C. Ewing  
 Engineer's Registration No. 309  
 File No. \_\_\_\_\_ Drawing No. \_\_\_\_\_  
 Date 5-5-54 Scale 1"=400'

STATE OF WEST VIRGINIA  
 DEPARTMENT OF MINES  
 OIL AND GAS DIVISION  
 CHARLESTON

**WELL LOCATION MAP**  
 FILE NO. CAB-475

*Not needed*

+ Denotes location of well on United States Topographic Maps, scale 1 to 62,500, latitude and longitude lines being represented by border lines as shown.

— Denotes one inch spaces on border line of original tracing.

6-6-206



STATE OF WEST VIRGINIA  
DEPARTMENT OF MINES  
OIL AND GAS DIVISION

Quadrangle Milton

Permit No. 6065-475

WELL RECORD

Oil or Gas Well Gas  
(KIND)

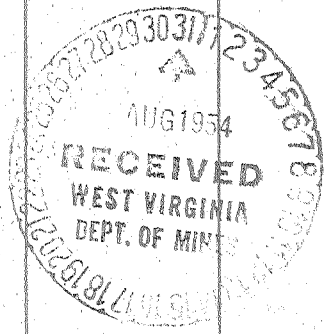
Company Jenniss B. Roy  
Address 925 Jefferson Ave., Huntington, W. Va.  
Farm Homer B. Summital Acres 69  
Location (waters) \_\_\_\_\_  
Well No. One Elev. 640  
District McMoran County Labell  
The surface of tract is owned in fee by Homer B. Summital  
Address \_\_\_\_\_  
Mineral rights are owned by Homer B. Summital  
Address \_\_\_\_\_  
Drilling commenced May 1, 1954  
Drilling completed July 29, 1954  
Date Shot July 29 From 2307 To 2349  
With 3900 Hercules Powder  
Open Flow 8/10ths Water in 2" Inch  
\_\_\_\_\_ /10ths Merc. in \_\_\_\_\_ Inch  
Volume 134.000 Cu. Ft.  
Rock Pressure 450 lbs. 24 hrs.  
Oil \_\_\_\_\_ bbls., 1st 24 hrs.  
Fresh water 395 feet \_\_\_\_\_ feet  
Salt water \_\_\_\_\_ feet \_\_\_\_\_ feet

Casing and Tubing	Used in Drilling	Left in Well	Packers
Size			
16			Kind of Packer _____
18			
10	<u>22'</u>	<u>22'</u>	Size of _____
8 1/4	<u>490'</u>		
6 5/8	<u>1832'</u>	<u>1832'</u>	Depth set _____
5 3/16	<u>60'</u>	<u>60'</u>	
3			Perf. top _____
2			Perf. bottom _____
Liners Used	<u>60'-5 1/2"</u>		Perf. top _____
			Perf. bottom _____

CASING CEMENTED \_\_\_\_\_ SIZE \_\_\_\_\_ No. Ft. \_\_\_\_\_ Date \_\_\_\_\_  
COAL WAS ENCOUNTERED AT 803' FEET 3' INCHES  
\_\_\_\_\_ FEET \_\_\_\_\_ INCHES FEET \_\_\_\_\_ INCHES  
\_\_\_\_\_ FEET \_\_\_\_\_ INCHES FEET \_\_\_\_\_ INCHES

Formation	Color	Hard or Soft	Top	Bottom	Oil, Gas or Water	Depth Found	Remarks
Clay	Red		0	45			
Slate			45	70			
Red Rock			70	85			
Slate			85	300			
lime			300	325			
slate & shell			325	395			
Sand			395	450			
lime			450	550			
Slate			550	675			
Sand			675	700			
lime			700	725			
late			725	800			
coal			800	803			
Slate			803	850			
Sand			850	900			
lime			900	950			
Slate & shell			950	1050			
lime & sand			1050	1225			
slate			1225	1275			
seaurchin			1275	1285			
Sand			1285	1370			
lime			1370	1450			
Coal			1450	1475			

Gas Pay  
2308



Formation	Color	Hard or Soft	Top	Bottom	Oil, Gas or Water	Depth Found	Remarks
Blue shale		1	1475	1515			
Green lime			1515	1700			
Slate & shells			1700	1750			
Sand			1750	1800			
Slate & Shells			1800	2307			
Green Grit			2307	2324			
25' pocket							

Date 8/30, 1957

APPROVED: [Signature] Owner