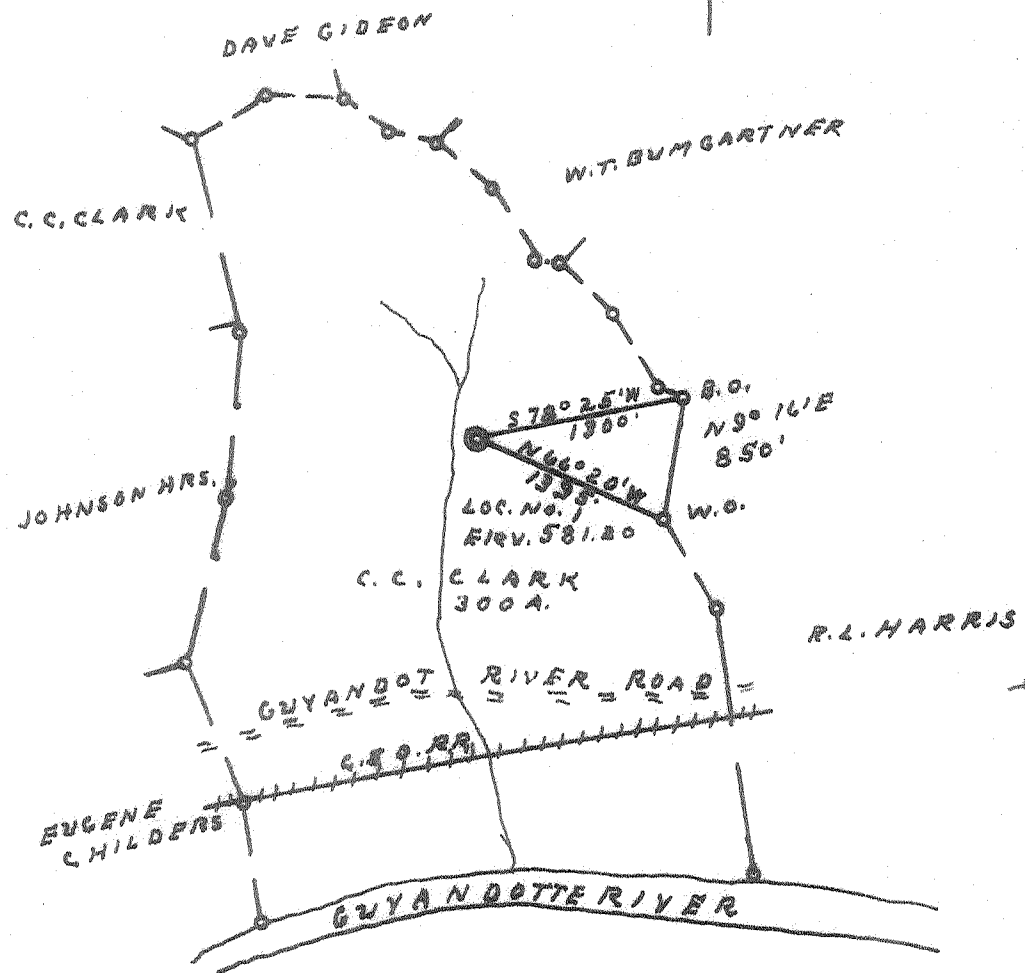


4.855
0.481W



7.5
0615 map
2215
.386

Minimum Error of Closure 1' IN 200'
 Source of Elevation B.M. ON R.R. EAST 571.00

Fracture.....
 New Location.....
 Drill Deeper.....
 Abandonment.....

I, the undersigned, hereby certify that this map is correct to the best of my knowledge and belief and shows all the information required by paragraph 6 of the rules and regulations of the oil and gas section of the mining laws of West Virginia.

Signed: L. J. Dye
 Squares: N S E W

Map No. _____

Company JOBY JAY ENTERPRISES, INC.
WATSON & CATENA
Box 88
 Address SPENCER, W.V.A.
 Farm C. C. CLARK
 Tract _____ Acres 300 Lease No. _____
 Well (Farm) No. 1 Serial No. _____
 Elevation (Spirit Level) 581.20
 Quadrangle GUYANDOT 3.6
 County CABELL District GUYANDOTTE
 Engineer L. J. Dye
 Engineer's Registration No. 804
 License No. _____ Drawing No. _____
 No. 9-1-67 Scale 1" = 1320'

STATE OF WEST VIRGINIA
 DEPARTMENT OF MINES
 OIL AND GAS DIVISION
 CHARLESTON

WELL LOCATION MAP

FILE NO. CAB-524

+ Denotes location of well on United States Topographic Maps, scale 1 to 62,500, latitude and longitude lines being represented by border lines as shown.

- Denotes one inch spaces on border line of original tracing.

6.50' spacing on river road. Deep well.



STATE OF WEST VIRGINIA
DEPARTMENT OF MINES
OIL AND GAS DIVISION

Rotary
Spudder
Cable Tools
Storage

Oil or Gas Well Gas Well
(KIND)

WELL RECORD

Quadrangle.....

Permit No. CAB-524

Company Joey Jay Enterprises, Inc.
Address P. O. Box 58, Spencer, W. Va. 25276
Farm C. C. Clark Acres 300
Location (waters).....
Well No. One (1) Elev. 581.20'
District Guyandotte County Cabell
The surface of tract is owned in fee by C. C. Clark
Address.....
Mineral rights are owned by C. C. Clark
Address.....
Drilling commenced 10/16/67
Drilling completed 12/1/67
Date Shot Perforated From 18 holes To.....
With Schlumberger

| Casing and Tubing | Used in Drilling | Left in Well | Packers |
|-------------------|------------------|--------------|----------------|
| Size | | | Kind of Packer |
| 16 | | | |
| 13 | | | Size of |
| 10 | | | Depth set |
| 8 1/4 | | | |
| 6 3/4 | | | |
| 5 3/16 | | | Perf. top |
| 4 1/2 | 3278' | yes | Perf. bottom |
| 3 | | | Perf. top |
| 2 | | | Perf. bottom |
| Liners Used | | | Perf. top |
| | | | Perf. bottom |

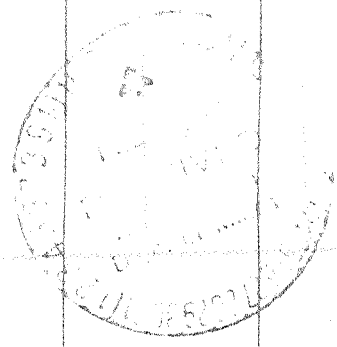
Open Flow /10ths Water in..... Inch
/10ths Merc. in..... Inch
Volume 8,000 Cu. Ft.
Rock Pressure 180 lbs. 4 hrs.
Oil None bbls. 1st 24 hrs.

Attach copy of cementing record.
CASING CEMENTED SIZE 4 1/2" No. Ft. 3278' Date.....
Amount of cement used (bags) 125 bags
Name of Service Co. Halliburton Oilwell Cementing Co.
COAL WAS ENCOUNTERED AT..... FEET..... INCHES
..... FEET..... INCHES
..... FEET..... INCHES

WELL ACIDIZED (DETAILS).....
WELL FRACTURED (DETAILS) 800 bbls. water and 20,000 lbs. sand

RESULT AFTER TREATMENT (Initial open Flow or bbls.) (8,000 ft. MCF show)
ROCK PRESSURE AFTER TREATMENT 180 lbs. HOURS 4
Fresh Water None Feet..... Salt Water None Feet.....
Producing Sand Brown Shale Depth 3278' (T.P.)

| Formation | Color | Hard or Soft | Top | Bottom | Oil, Gas or Water | Depth | Remarks |
|--------------|-------|--------------|------|--------|-------------------|-------|---------|
| Soil | | | 0 | 12 | | | |
| Slate | | | 12 | 20 | | | |
| Red Rock | | | 20 | 80 | | | |
| Slate | | | 80 | 85 | | | |
| Red Rock | | | 85 | 130 | | | |
| Slate&Shells | | | 130 | 160 | | | |
| Red Rock | | | 160 | 170 | | | |
| Sand | | | 170 | 180 | | | |
| Slate | White | | 180 | 325 | | | |
| Sand | | | 325 | 439 | | | |
| Slate | | | 439 | 460 | | | |
| Sand | | | 460 | 540 | | | |
| Slate | | | 540 | 630 | | | |
| Sand | | | 630 | 670 | | | |
| Slate&Shells | | | 670 | 685 | | | |
| Sand | | | 685 | 715 | | | |
| Slate&Shells | | | 715 | 790 | | | |
| Sand | | | 790 | 800 | | | |
| Slate&Shells | | | 800 | 1100 | | | |
| Sand | | | 1100 | 1128 | | | |
| Slate&Shells | | | 1128 | 1198 | | | |
| Little Lime | | | 1198 | 1218 | | | |
| Pencil | | | 1218 | 1230 | | | |
| Big Lime | | | 1230 | 1388 | | | |
| Slate | | | 1388 | 1393 | | | |
| Keene & Sand | | | 1393 | 1445 | | | |



Continued next page

FEB 27 1968

| Formation | Color | Hard or Soft | Top | Bottom | Oil, Gas or Water | Depth Found | Remarks |
|--------------|-------|--------------|------|--------|-------------------|-------------|---------|
| Slate | | | 1445 | 1450 | | | |
| Injun Sand | | | 1450 | 1510 | | | |
| Gritty Lime | | | 1510 | 1520 | | | |
| Slate&Shells | | | 1520 | 1905 | | | |
| Lime | | | 1905 | 1925 | | | |
| Slate&Shells | | | 1925 | 2018 | | | |
| Berea Grit | | | 2018 | 2027 | | | |
| Red Rock | Pink | Solid | 2027 | 2047 | | | |
| Shell | Brown | | 2047 | 2070 | | | |
| Slate&Shells | | | 2070 | 2200 | | | |
| Slate | White | | 2200 | 2350 | | | |
| Slate&Shells | | | 2350 | 2700 | | | |
| Slate | White | | 2700 | 2730 | | | |
| Shale | Brown | | 2730 | 2840 | | | |
| Slate | White | | 2840 | 2855 | | | |
| Shale | Brown | | 2855 | 2970 | | | |
| Slate&Shells | White | | 2970 | 3050 | | | |
| Slate&Shells | Black | | 3050 | 3173 | | | |
| Shell | Brown | | 3173 | 3235 | | | |
| Lime | | | 3235 | 3278 | | | |

Pay

*Devonian shale at TD
No.
Gamma ray log
Shows top of
Onondaga at 3247
J.F.S.*

Date February 9, 19 68

APPROVED Joey Jay Enterprises, Owner

By *John P. Pava* agent