

1100675 P

WW-7
8-30-06



West Virginia Department of Environmental Protection
Office of Oil and Gas
WELL LOCATION FORM: GPS

API: 47-011-00675 WELL NO.: _____

FARM NAME: LLOYD DAVIS

RESPONSIBLE PARTY NAME: Exco Resources

COUNTY: Cabell DISTRICT: Grant

QUADRANGLE: Hurricane 7.5

SURFACE OWNER: Edna Davis

ROYALTY OWNER: LLOYD DAVIS

UTM GPS NORTHING: 4256664.00m

UTM GPS EASTING: 405253.00m GPS ELEVATION: 272m 782 FT.

The Responsible Party named above has chosen to submit GPS coordinates in lieu of preparing a new well location plat for a plugging permit or assigned API number on the above well. The Office of Oil and Gas will not accept GPS coordinates that do not meet the following requirements:

- Datum: NAD 1983, Zone: 17 North, Coordinate Units: meters, Altitude: height above mean sea level (MSL) – meters.
- Accuracy to Datum – 3.05 meters
- Data Collection Method:
Survey grade GPS _____: Post Processed Differential _____
Real-Time Differential _____
Mapping Grade GPS X: Post Processed Differential _____
Real-Time Differential X

Received

APR 21 2014

Office of Oil and Gas
WV Dept. of Environmental Protection

4. Letter size copy of the topography map showing the well location.

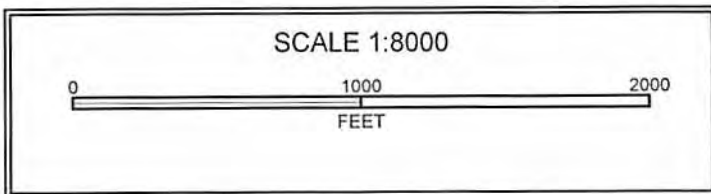
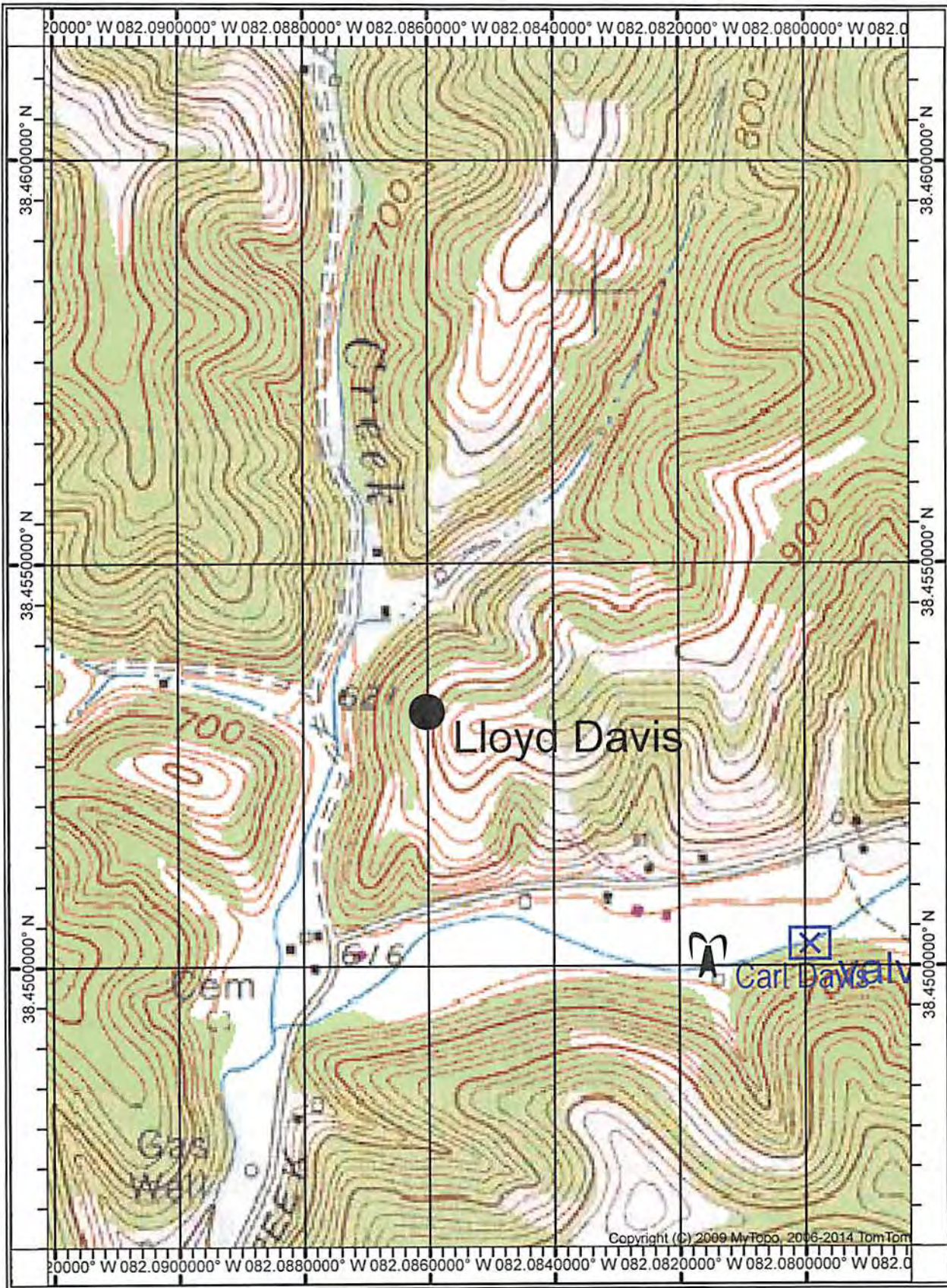
I the undersigned, hereby certify this data is correct to the best of my knowledge and belief and shows all the information required by law and the regulations issued and prescribed by the Office of Oil and Gas.

R. A. Green
Signature

construction specialist
Title

4-21-14
Date

1100675P



Received

APR 17 2014

Office of Oil and Gas
WV Dept. of Environmental Protection