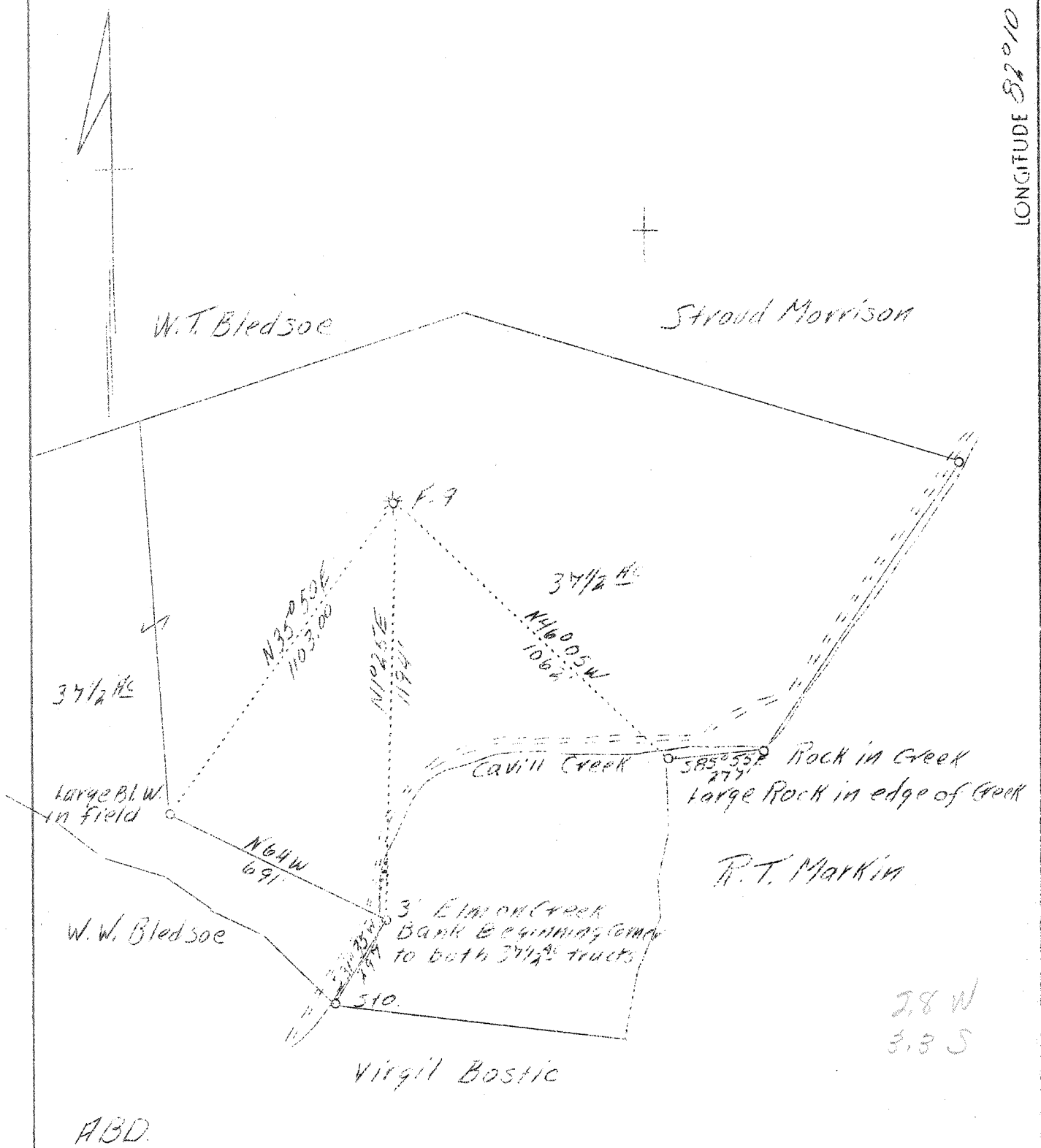


LATITUDE 38° 25'

LONGITUDE 82° 10'



Company	Hamilton Gas Corp.
Address	Charleston, W. Va.
Farm	John Markin
Tract	One
Acres	75
Lease No.	W.C.-228
Well (Farm) No.	One
Serial No.	F-9
Elevation (SL)	594.15
Quadrangle	Milton S. W.
County	Cabell
District	McComas
Engineer	D. A. Belcher
File No.	529 - Sec. 2-A-1
Date	Feb. 23, 1939
Scale	1" - 400'

STATE OF WEST VIRGINIA
 Department of Mines
 OIL & GAS DIVISION
 Charleston

WELL LOCATION MAP
 File No. Cab-13-A

x Denotes location of well on U. S. Topographic Maps, scale 1 to 62,500, latitude and longitude lines being represented by border lines as shown.

- Denotes one inch spaces on border line of original tracing.

6-6 Merritt Creek - Salt Rock (206) V

J. M.
J. M. MARKIN FARM WELL NO. F-9

McCoy
Cabell County, W. Va.

On J. M. Markin Farm #1, (Cavill Creek). (*Hamilton Co. Cup*)

Lease No. WC-228

REMARKS: Water at 540 ft. Salt water at 1160 ft. Not enough gas to guage before shot. Shot with 5975 lbs. gelatin on 12/27/29.

Producing gas from B. Shale between 2667 and 3423 ft. Guaged 20/10 W. 1" 53,280 cu. ft. when shut in in 6-5/8" casing 12/29/29.

CASING RECORD: 13" Cond'r - 16 ft. (left in well); 10" casing - 70 ft. (left in well); 8 1/2" casing - 713 ft. (585 left in well); 6-5/8" casing, 1809 ft. (left in well). Steel shoe on bottom set in 15 ft. red mud.

DRILLERS: Reishman Drilling Co., Inc.

Drilling commenced: 10/29/29. Completed 12/22/29.

Record to R. C. Tucker from Southeastern Gas Company 2/9/60.

	<u>TOP</u>	<u>BOTTOM</u>
Mud & slate	0	115
Red Rock	115	130
Slate	130	275
Red Rock	275	310
Sand	310	350
Slate	350	368
Red Rock	368	380
Slate & sand	380	970
Slate & shell	970	1145
Salt sand	1145	1328
Slate	1328	1365
Sand	1365	1395
Slate & shell	1395	1455
Little Lime	1455	1478
Big Lime	1478	1650
Sand	1650	1710
Injun Sand	1710	1804
Black Lime Shell	1804	1814
Slate	1814	2030
Lime	2030	2060
Slate	2060	2110
Shell	2110	2125
Slate & shell	2125	2252
Brown Shale	2252	2262
Berea Sand	2262	2276
Lime Shell	2276	2290
Slate	2290	2318
Shell	2318	2330
Slate	2330	2340
Hard shell	2340	2360
Slate	2360	2385
Shell	2385	2395
White Slate	2395	2650
Brown Shale	2650	2875
Slate	2875	2905
Brown Shale	2905	2950
Slate	2950	3060
Brown Shale	3060	3150
Slate	3150	3170
Brown Shale	3170	3260
Slate	3260	3270
Brown Shale	3270	3423
Slate	3423	3435
		TOTAL DEPTH: 3435