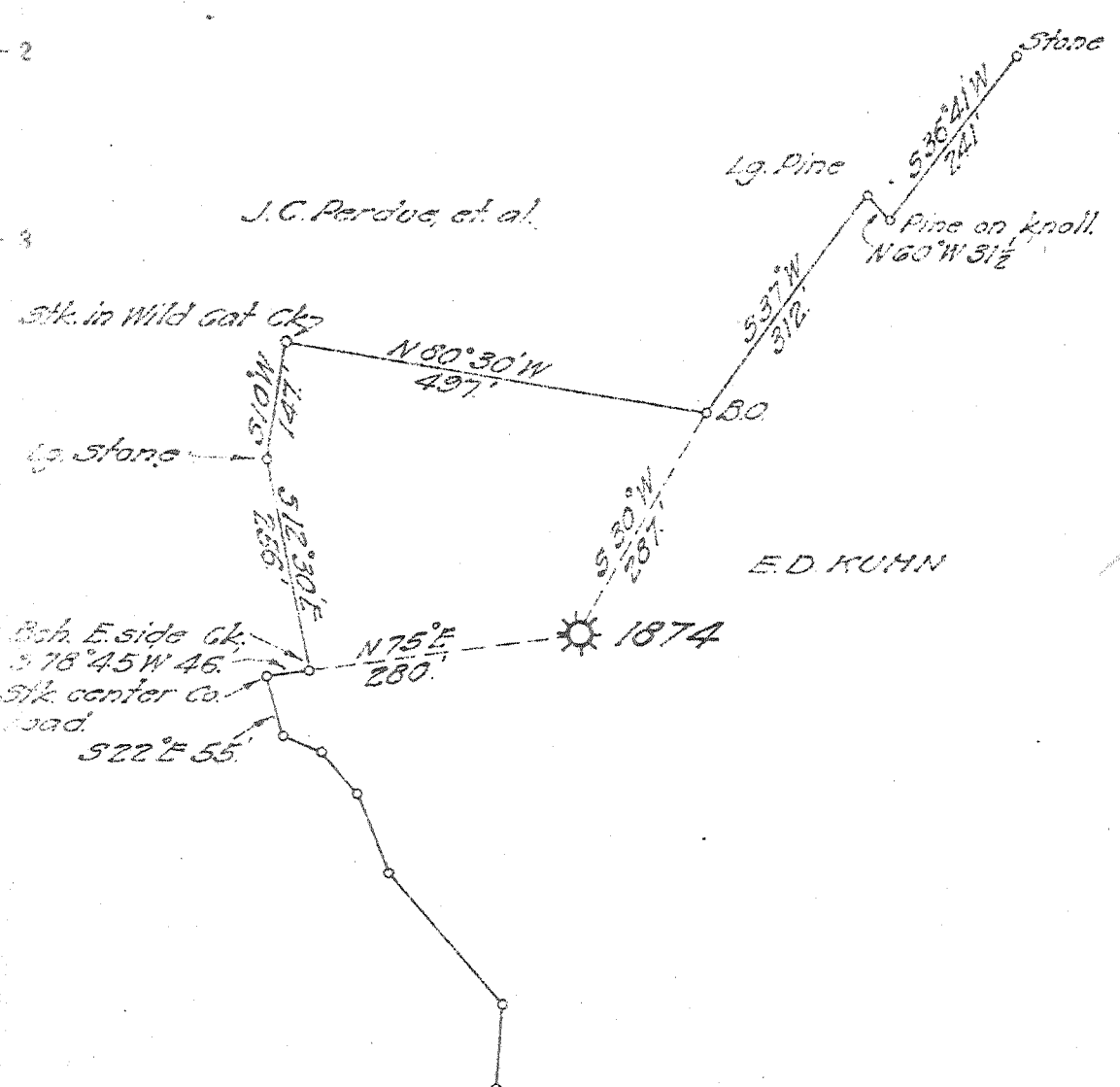


John McWhorter, et al.

Longitude 82 15'



New Location
 Drill Deeper
 Abandonment X

AUG 27 1944

1.2 W
 Y. 93 ~~2~~

Company UNITED FUEL GAS CO
 Address CHARLESTON W. VA.
 Farm E. D. KUHN
 Tract _____ Acres 54 Lease No. 20952
 Well (Farm) No. _____ Serial No. 1874
 Elevation (Spirit Level) 680 BAR
 Quadrangle GUYANDOTTE
 County GABELL District BARBOURSVILLE
 Engineer E. D. Kuhn
 Engineer's Registration No. 659
 File No. 26-65 Drawing No. _____
 Date AUG 15, 1944 Scale 1" = 200'

STATE OF WEST VIRGINIA
 DEPARTMENT OF MINES
 OIL AND GAS DIVISION
 CHARLESTON

WELL LOCATION MAP
 FILE NO. CAB-36-A

+ Denotes location of well on United States Topographic Maps, scale 1 to 62,500. latitude and longitude lines being represented by border lines as shown.

- Denotes one inch spaces on border line of original tracing

FOR RENT

26-36-A

UNITED FUEL GAS COMPANY

(INCORPORATED)

MAY 28 1929
MAY 28 1929
163

SERIAL WELL NO. 1874

LEASE NO. 20952

MAP SQUARE 26-65

RECORD OF WELL No. 1 on the
 E.D. Kuhn Farm of 53-3/4 Acres
 in Barboursville District
Cabell County
Branchland Field, State of West Va.

Big Commenced ----- 192
 Big Completed ----- 192
 Drilling Commenced March 15, 1928.
 Drilling Completed May 27, 1928.
 Drilling to cost \$1.85 per foot
 Contractor is: Ortman & Shipe,
 Address: Barboursville,
West Va.

Drillers' Names
L.T. King
S.E. Risher

CASING AND TUBING		
SIZE	USED IN DRILLING	LEFT IN WELL
#7 10	125'-1"	125'-1"
13		
10		
8 1-4	871'-	----
6 5-8	1763'-	1763'-
5 3-16		
4 7-8		
4		
3	3326'-	3326'-
2		

SHUT IN
 Date May 14, 1928.
3 in Tubing or Anchor Well abandoned and
 Size of Packer 3"x6-5/8" Anchor 19
 Kind of Packer OWS-Special Set at 2136'
 1st Perf. Set 10'- On Bottom
 2nd Perf. Set 52' (Top) Bottom

TEST BEFORE SHOT
17 of Water in 1 inch
 10ths of Merc. in _____ inch
 10ths 42,000
 Volume 500,000 Cu. ft.

TEST AFTER SHOT
 (When Tubed)
17 of Water in 2 inch
 10ths of Merc. in _____ inch
 10ths Volume 199,000 Cu. ft.
 Rock Pressure 450/- 48 Hr.
 Date Shot April 30, 1928.
 Size of Torpedo 160 Qts.
 Oil Flowed _____ bbls. 1st 24 hrs.
 Oil Pumped _____ bbls. 1st 24 hrs.

Elevation 670'

DRILLER'S RECORD

FORMATION	TOP	BOTTOM	THICKNESS	REMARKS
Slate & Sand		125	125	
Slate & Shells	125	1255	1130	Hole Full Water at 1225'
Lime Shell	1255	1280	25	
Maxon Sand	1280	1300	20	
Slate & Shells	1300	1320	20	
Red Rock	1320	1335	15	
Slate & Shells	1335	1397	62	
Little Lime	1397	1418	21	
Pencil Cave	1418	1424	6	
Big Lime	1424	1590	166	Steel Line Measurement of top.
Slate	1590	1650	60	
Big Injun Sand	1650	1750	100	Water In Injun At 1685'.
Slate & Lime Shells	1750	2205	455	
Berea Sand	2205	2218	13	Gas 2205-2218. Test #1/10 Water in 1"
Slate & Shells	2218	2635	417	
Brown Shale	2635	2750	115	
Slate	2750	2920	170	
Shale	2920	3265	345	
White Slate	3265	3317	52	Gas from 3201 to 3273. Shot with 160
Total Depth		3317	3317	Quarts. Tested 17/10 Water thru 2" after cleaning out & tubing, May 14, 1928. Set 3" Tubing Anchor Packer At 2136'.