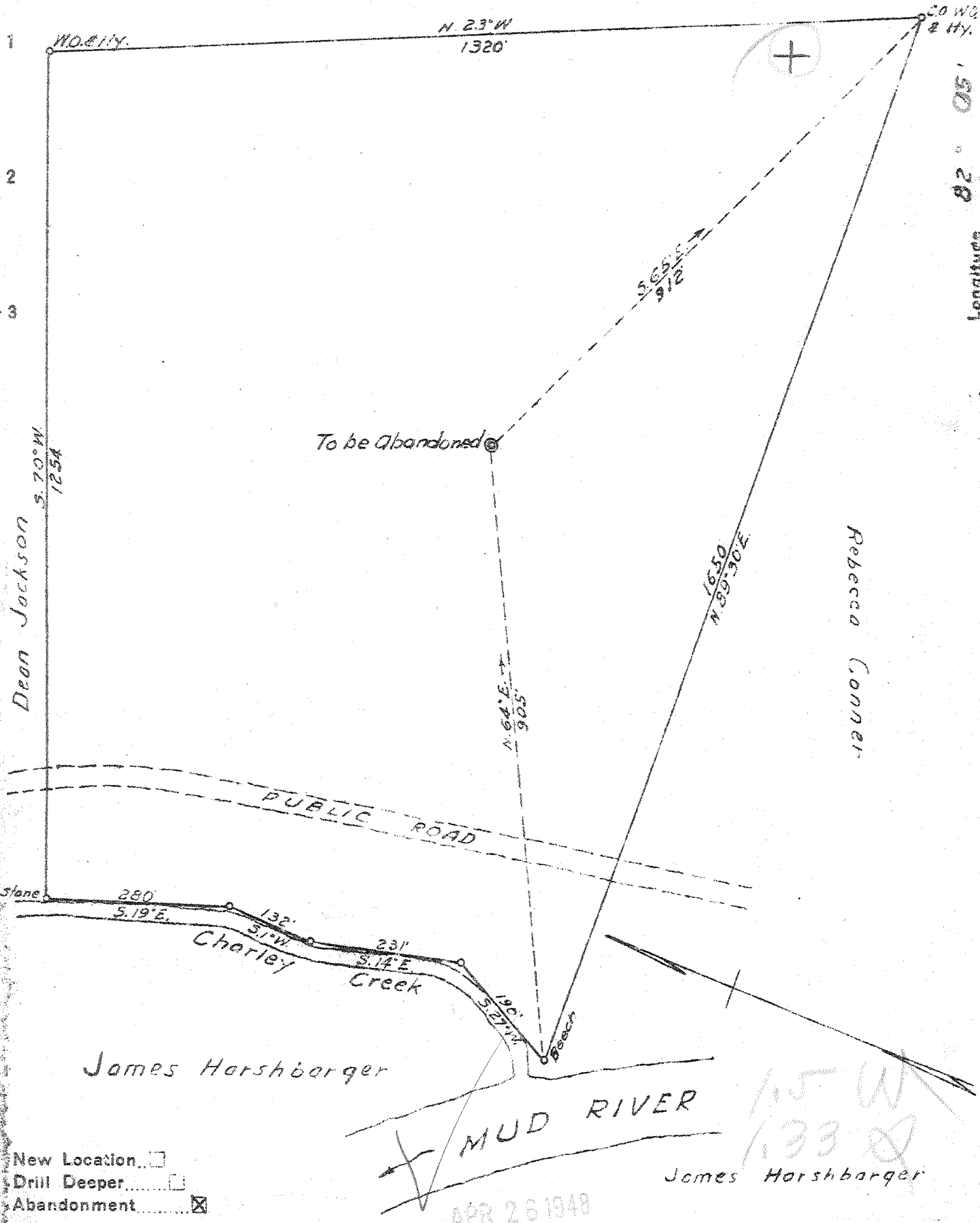


Dean Jackson



- New Location
- Drill Deeper
- Abandonment

Company HAMILTON GAS CORP.

Address CHARLESTON, W. VA

Farm J. B. KLINE (Now G. F. SMITH)

Tract \_\_\_\_\_ Acres 35 Lease No. HWC-28

Well (Farm) No. 1 Serial No. Z-13

Elevation (Spirit Level) 795

Quadrangle MILTON

County CABELL District GRANT

Engineer G. B. Goring

Engineer's Registration No. 309

File No. \_\_\_\_\_ Drawing No. \_\_\_\_\_

Date 4-6-48 Scale 1" = 200

STATE OF WEST VIRGINIA  
DEPARTMENT OF MINES  
OIL AND GAS DIVISION  
CHARLESTON

WELL LOCATION MAP  
FILE NO. CAB-47-A

+ Denotes location of well on United States Topographic Maps, scale 1 to 62,500, latitude and longitude lines being represented by border lines as shown.

- Denotes one inch spaces on border line of original tracing.

Ball Gap (207)