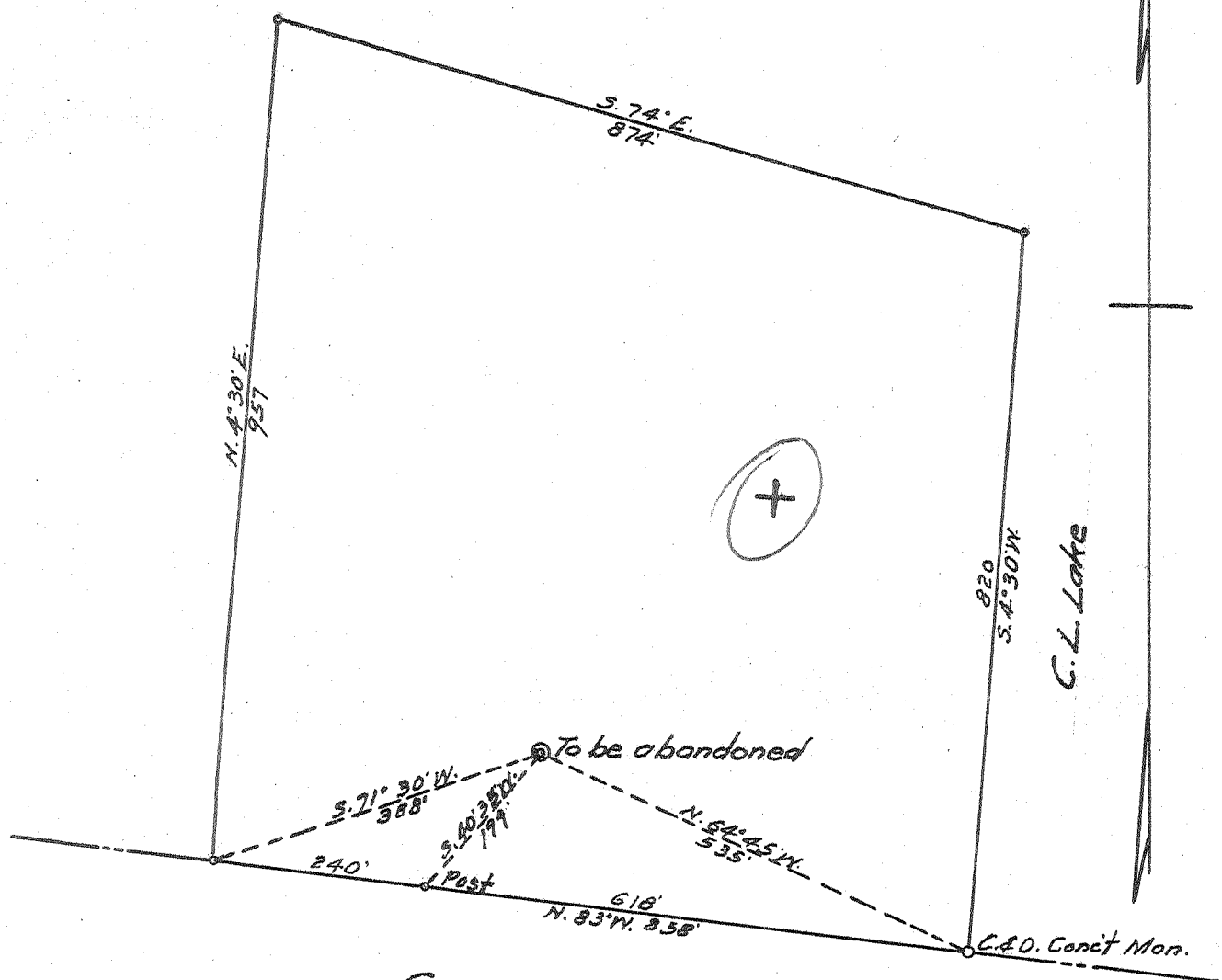


Latitude 38° 30'

Childers Est.

Longitude 82° 15'



C. & O. Ry. Co.

*219 W
5.02 A*

New Location
Drill Deeper
Abandonment

SEP 9 1957

Company CUMBERLAND GAS CORP.
 Address CHARLESTON, W. VA.
 Farm C. & O. RY. CO.
 Tract _____ Acres 14 Lease No. MC-8
 Well (Farm) No. 1 Serial No. MCT
 Elevation (Spirit Level) 625'
 Quadrangle GUYANDOT
 County CABELL District BARBOURSVILLE
 Engineer G. G. Ewing
 Engineer's Registration No. 309
 File No. _____ Drawing No. _____
 Date 8-14-57 Scale 1" = 200'

STATE OF WEST VIRGINIA
DEPARTMENT OF MINES
OIL AND GAS DIVISION
CHARLESTON

WELL LOCATION MAP
FILE NO. CAB-81-A

+ Denotes location of well on United States Topographic Maps, scale 1 to 62,500, latitude and longitude lines being represented by border lines as shown.

- Denotes one inch spaces on border line of original tracing.

Huntington (209)
C. & O. Ry. Co., No. 1 (MC-7) — CUMBERLAND GAS CO. — CAB-81-A