

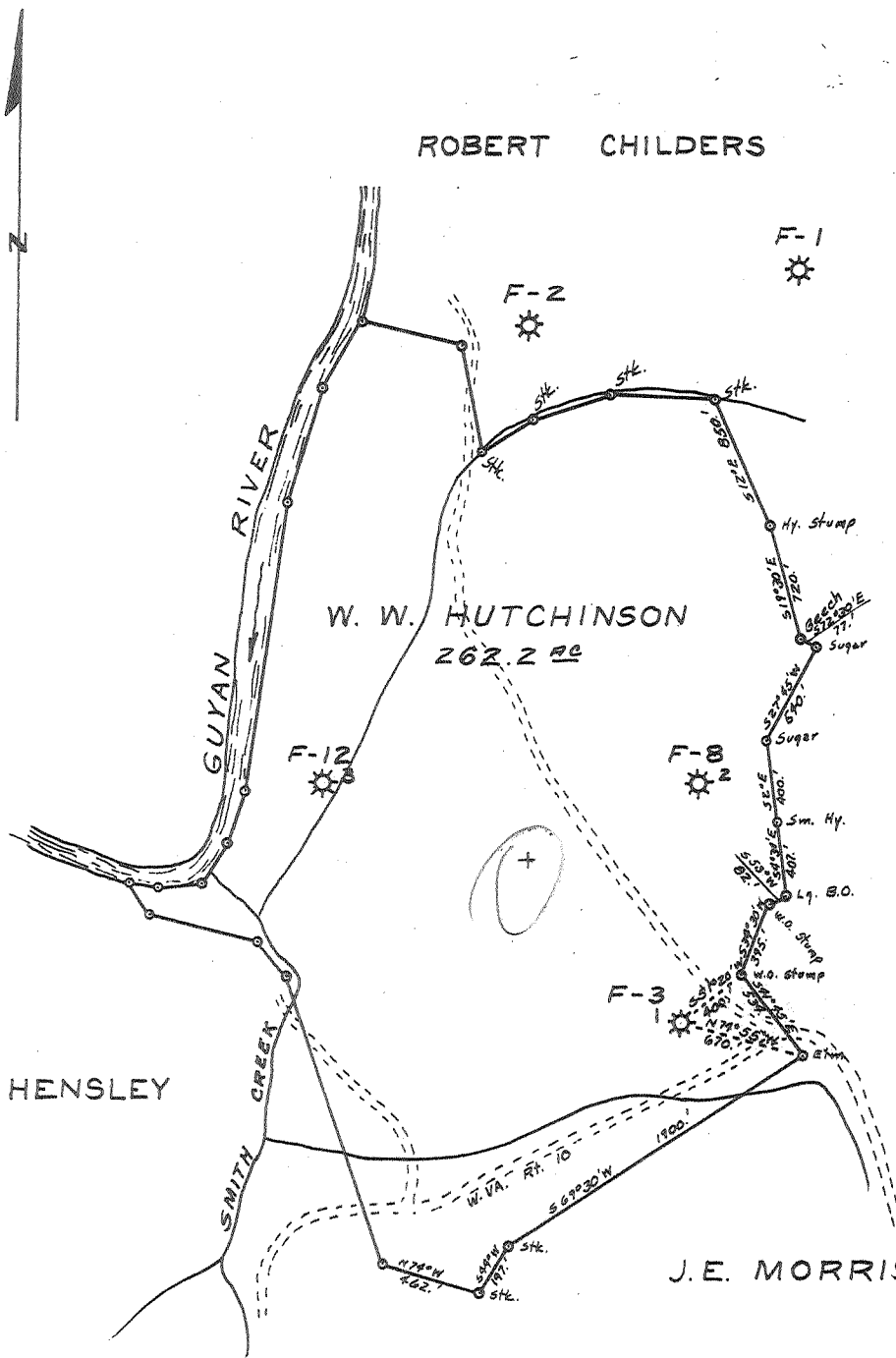
ROBERT CHILDERS

W. W. HUTCHINSON  
262.2 AC

N. B. MORRISON

W. B. HENSLEY

J. E. MORRISON



SEP 19 1960

*3182 W*  
*5.3 v s*

New Location. \_\_\_\_\_  
 Drill Deeper. \_\_\_\_\_  
 Redrill. \_\_\_\_\_  
 Abandonment.

TRACED BY L.G. STURGILL FROM MAP MADE BY D.A. BELCHER

Company SOUTHEASTERN GAS CO.  
 Address BOX 2347 CHARLESTON, W.VA.  
 Farm W. W. HUTCHINSON  
 Tract \_\_\_\_\_ Acres 262.2 Lease No. WC-14  
 Well (Farm) No. 1 Serial No. F-3  
 Elevation (Spirit Level) 730.  
 Quadrangle MILTON S.W.  
 County CABELL District MCOMAS  
 Engineer G. H. Hall  
 Engineer's Registration No. 2602  
 File No. \_\_\_\_\_ Drawing No. 9-60  
 Date JULY 1960 Scale 1"=1000'

STATE OF WEST VIRGINIA  
 DEPARTMENT OF MINES  
 OIL AND GAS DIVISION  
 CHARLESTON

**WELL LOCATION MAP**  
 FILE NO. CAB-91-A

— Denotes location of well on United States Topographic Maps, scale 1 to 62,500, latitude and longitude lines being represented by border lines as shown.

— Denotes one inch spaces on border line of original tracing.

W.W. HUTCHINSON No. 1 (F-3) - SOUTHEASTERN GAS CO. - CAB-91-A



235

STATE OF WEST VIRGINIA  
DEPARTMENT OF MINES  
OIL AND GAS DIVISION

Quadrangle Milton

Permit No. leaf-91-A

WELL RECORD

Oil or Gas Well Gas  
(KIND)

Company Southeastern Gas Company  
Address P. O. Box 2347, Charleston 28, W. Va.  
Farm W. W. Hutchinson Acres 262  
Location (waters) Smith Creek  
Well No. F3 Elev. \_\_\_\_\_  
District McComas County Cabell  
The surface of tract is owned in fee by Hutchinson Heirs  
Address \_\_\_\_\_  
Mineral rights are owned by Hutchinson Heirs  
Address \_\_\_\_\_

Drilling commenced May 13, 1929  
Drilling completed July 11, 1929  
Date Shot 7-15-29 From 3010 To 3365  
With 2800# 9090  
Open Flow 52 /10ths Water in 2 Inch  
/10ths Merc. in \_\_\_\_\_ Inch  
Volume 304M Cu. Ft.  
Rock Pressure \_\_\_\_\_ lbs. \_\_\_\_\_ hrs.  
Oil 2 bbls., 1st 24 hrs.  
WELL ACIDIZED \_\_\_\_\_  
WELL FRACTURED \_\_\_\_\_

Casing and Tubing	Used in Drilling	Left in Well	Packers
Size			Kind of Packer
16			
13			
10			Size of
<del>8</del> 5/8 OD	750'	Pulled	
3 1/2 7 OD	1,758'	1,758	Depth set
5 3/16			
3			Perf. top
2			Perf. bottom
Liners Used	422'	422'	Perf. top
			Perf. bottom

CASING CEMENTED \_\_\_\_\_ SIZE \_\_\_\_\_ No. Ft. \_\_\_\_\_ Date \_\_\_\_\_

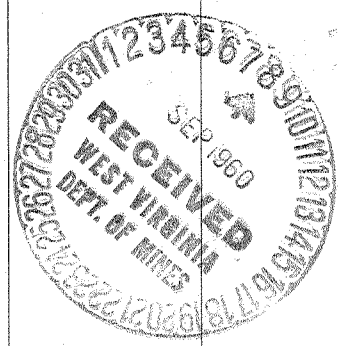
COAL WAS ENCOUNTERED AT 520 FEET 60 INCHES  
\_\_\_\_\_ FEET \_\_\_\_\_ INCHES 765 FEET 60 INCHES  
\_\_\_\_\_ FEET \_\_\_\_\_ INCHES \_\_\_\_\_ FEET \_\_\_\_\_ INCHES

RESULT AFTER TREATMENT \_\_\_\_\_

ROCK PRESSURE AFTER TREATMENT \_\_\_\_\_

Fresh Water 90-4BPH Feet 765' 1 BPH Salt Water \_\_\_\_\_ Feet \_\_\_\_\_

Formation	Color	Hard or Soft	Top	Bottom	Oil, Gas or Water	Depth	Remarks
Sand			0	30			
Slate			30	200			
Sand			200	240			
Slate			240	520			
Coal			520	525			
Sand			525	550			
Slate			550	690			
Sand			690	740			
Slate			740	765			
Coal			765	770			
Slate			770	1070			
Salt Sand			1070	1295			
Slate			1295	1318			
Red Rock & Slate			1318	1350			
Sand			1350	1370			
Slate & Lime			1370	1420			
Little Lime			1420	1445			
Slate			1445	1450			
Big Lime			1450	1610			
Slate & Lime			1610	1660			
Sand			1660	1740			
Slate			1740	1753			
Lime			1753	1770			
Slate & Lime			1720	2060			
Lime			2060	2150			
White Slate			2150	2223			
Sand			2223	2233			
White Slate			2233	2242			
Lime & Shells			2242	2330			



AUG 2 1961

(over)

W.W. HUTCHINSON NO-F3-SOUTHEASTERN GAS CO CAB-91-A

Formation	Color	Hard or Soft	Top	Bottom	Oil, Gas or Water	Depth Found	Remarks
Slate & Lime			2330	3010			
Brown Shale			3010	3060			
Slate			3060	3090			
Shale			3090	3365			
Slate			3365	3387			
TOTAL DEPTH				3387			

Date \_\_\_\_\_, 19\_\_\_\_

APPROVED \_\_\_\_\_, Owner

By \_\_\_\_\_ (Title)