

1300707A

WW-7
3-21-14



West Virginia Department of Environmental Protection
Office of Oil and Gas
WELL LOCATION FORM: GPS

CK 30139
10000

API: 47-013-00707 WELL NO.: T.S. Cunningham #2

FARM NAME: T.S. Cunningham

RESPONSIBLE PARTY NAME: PDC Mountaineer, LLC

COUNTY: Calhoun DISTRICT: Sherman

QUADRANGLE: Millstone 7.5'

SURFACE OWNER: Raymond F. & Madeline N. Lahaie

ROYALTY OWNER: T.S. Cunningham Heirs, et al.

UTM GPS NORTHING: 4297798.7

UTM GPS EASTING: 492925.7 GPS ELEVATION: 271 m (890 ft)

The Responsible Party named above has chosen to submit GPS coordinates in lieu of preparing a new well location plat for a plugging permit or assigned API number on the above well. The Office of Oil and Gas will not accept GPS coordinates that do not meet the following requirements:

- Datum: NAD 1983, Zone: 17 North, Coordinate Units: meters, Altitude: height above mean sea level (MSL) – meters.
- Accuracy to Datum – 3.05 meters
- Data Collection Method:
Survey grade GPS : Post Processed Differential
Real-Time Differential
Mapping Grade GPS : Post Processed Differential
Real-Time Differential
- Letter size copy of the topography map showing the well location.**

I the undersigned, hereby certify this data is correct to the best of my knowledge and belief and shows all the information required by law and the regulations issued and prescribed by the Office of Oil and Gas.

Signature *Stacy Ohm*
Date 4/1/14

Title PS # 2180

RECEIVED
Office of Oil and Gas

MAY 20 2014

WV Department of
Environmental Protection

1300707P

Topo Quad: Millstone 7.5'

Scale: 1" = 2000'

County: Calhoun

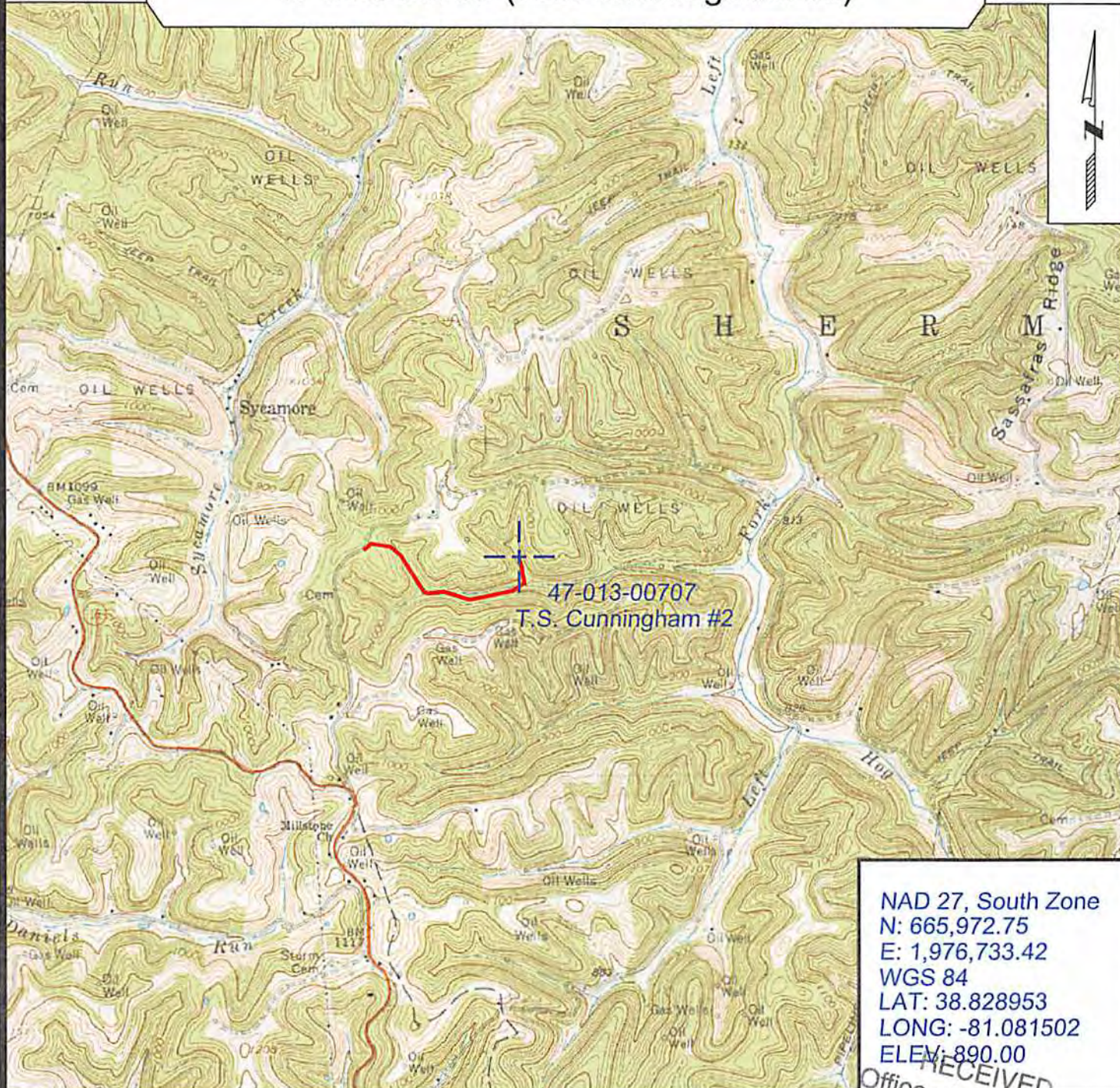
Date: March 21, 2014

District: Sherman

Project No: 67-14 PDC

47-013-00707 (T.S. Cunningham #2)

Topo



47-013-00707
T.S. Cunningham #2

NAD 27, South Zone
 N: 665,972.75
 E: 1,976,733.42
 WGS 84
 LAT: 38.828953
 LONG: -81.081502
 ELEV: 890.00

RECEIVED
 Office of Oil and Gas
 MAY 19 2014
 WV Department of
 Environmental Protection



SURVEYING AND MAPPING SERVICES PERFORMED BY:
ALLEGHENY SURVEYS, INC.
 1-800-482-8606
 P.O. BOX 438
 BIRCH RIVER, WV 26610
 PH: (304) 649-8606
 FAX: (304) 649-8608

PREPARED FOR:
PDC Mountaineer, LLC
 120 Genesis Blvd.
 Bridgeport, WV 26330