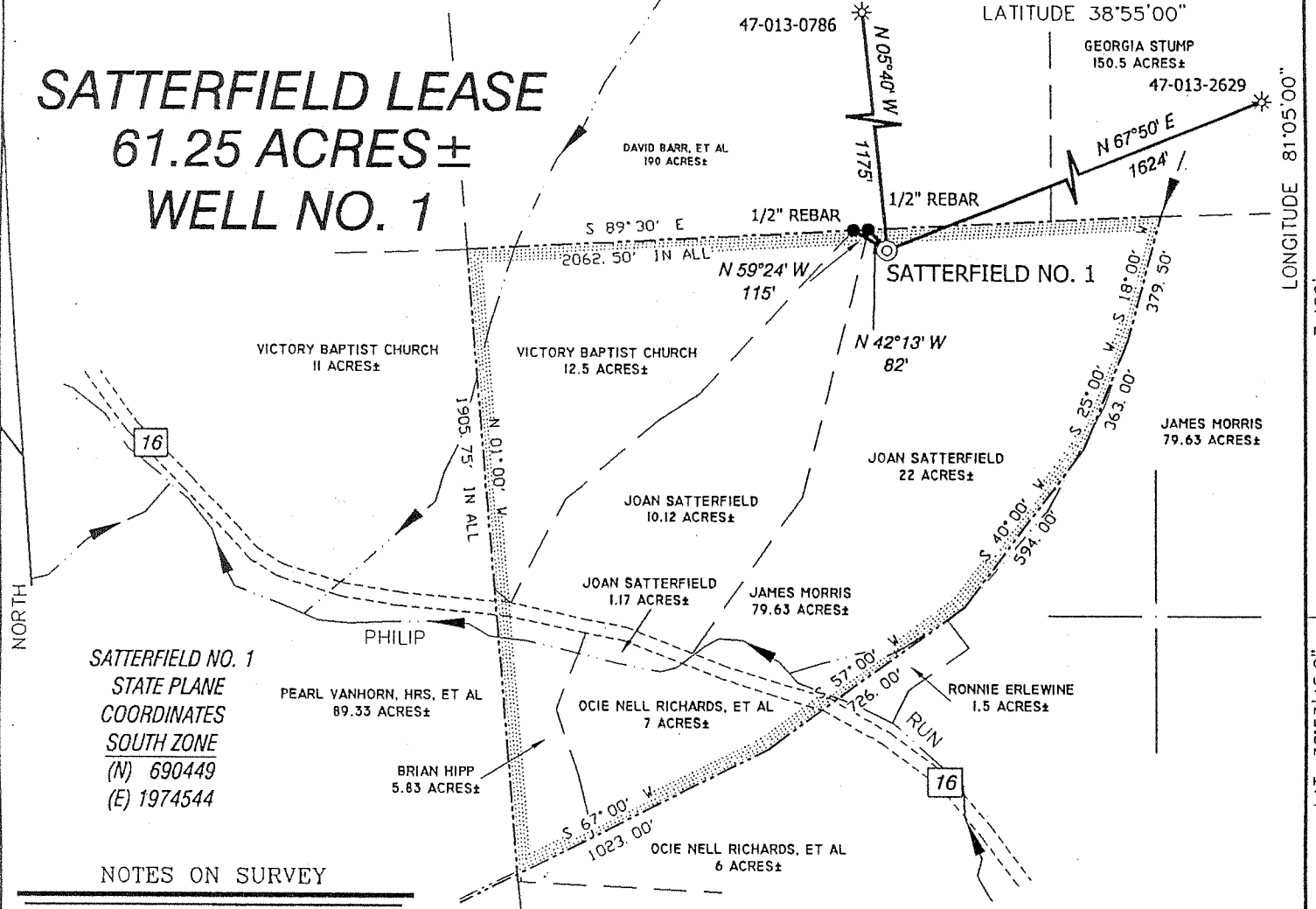


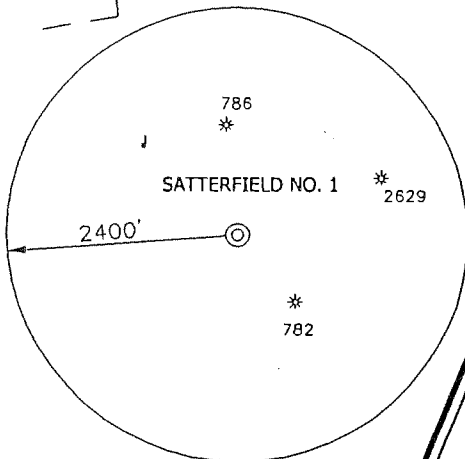
SATTERFIELD LEASE 61.25 ACRES± WELL NO. 1



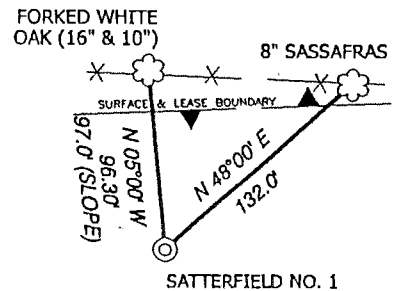
**SATTERFIELD NO. 1
STATE PLANE
COORDINATES
SOUTH ZONE
(N) 690449
(E) 1974544**

NOTES ON SURVEY

1. TIES TO WELLS AND CORNERS ARE BASED ON STATE PLANE GRID NORTH 14W SOUTH ZONE NAD '27.
2. TIES TO REFERENCES ARE BASED ON MAGNETIC NORTH 04-29-04.
3. LEASE BOUNDARY SHOWN HEREON TAKEN FROM DEED BOOK 126 AT PAGE 376 AND OTHER INFORMATION PROVIDED BY STEVE SATTERFIELD PRODUCTION CO..
4. SURFACE OWNER AND ADJOINER INFORMATION TAKEN FROM THE ASSESSOR AND COUNTY CLERK RECORDS OF CALHOUN COUNTY IN APRIL, 2004 AND INFORMATION PROVIDED BY STEVE SATTERFIELD PRODUCTION CO..
5. WELL LAT./LONG. ESTABLISHED BY DGPS(SUBMETER MAPPING GRADE).



REFERENCES

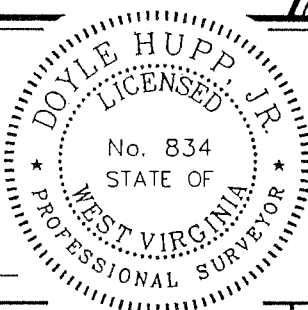


**HUPP Surveying & Mapping
P.O. Box 647 Grantsville, WV 26147
(304) 354-7035 EMAIL: surveyor@depolltd.com**

I THE UNDERSIGNED, HEREBY CERTIFY THAT THIS PLAT IS CORRECT TO THE BEST OF MY KNOWLEDGE AND BELIEF AND SHOWS ALL THE INFORMATION REQUIRED BY LAW AND THE REGULATIONS ISSUED AND PRESCRIBED BY THE DIVISION OF ENVIRONMENTAL PROTECTION.

P.S.
834

Doyle Hupp Jr.



(+) DENOTES LOCATION OF WELL ON UNITED STATES TOPOGRAPHIC MAPS.

DATE MAY 3, 20 04
 OPERATORS WELL NO. SATTERFIELD NO. 1
 API WELL NO. 47-013-04513
 STATE COUNTY PERMIT

MINIMUM DEGREE OF ACCURACY 1/2500 FILE NO. W1250 (BK24-19)
 PROVEN SOURCE OF ELEVATION DGPS (SUBMETER GRADE) SCALE 1" = 500'

STATE OF WEST VIRGINIA
 DIVISION OF ENVIRONMENTAL PROTECTION
 OFFICE OF OIL AND GAS



WELL TYPE : OIL GAS LIQUID INJECTION WASTE DISPOSAL IF "GAS" PRODUCTION STORAGE DEEP SHALLOW

LOCATION :
 ELEVATION 1283' WATERSHED PHILIP RUN
 DISTRICT SHERMAN COUNTY CALHOUN QUADRANGLE GRANTSVILLE 7.5'

SURFACE OWNER JOAN M. SATTERFIELD ACREAGE 22.35±
 ROYALTY OWNER STEPHEN L. SATTERFIELD LEASE ACREAGE 61.25±

PROPOSED WORK : LEASE NO. _____
 DRILL CONVERT DRILL DEEPER REDRILL FRACTURE OR STIMULATE PLUG OFF OLD FORMATION PERFORATE NEW FORMATION PLUG AND ABANDON CLEAN OUT AND REPLUG OTHER _____
 PHYSICAL CHANGE IN WELL (SPECIFY) _____ TARGET FORMATION MARCELLUS
 ESTIMATED DEPTH 5,995'

WELL OPERATOR STEVE SATTERFIELD PRODUCTION CO. DESIGNATED AGENT STEPHEN L. SATTERFIELD
 ADDRESS P.O. BOX 757 GRANTSVILLE, WV 26147 ADDRESS P.O. BOX 757 GRANTSVILLE, WV 26147

COUNTY NAME
CAL
PERMIT
4513

RECEIVED
 Office of Oil & Gas
 MAY 24 2010
 WV Department of
 Environmental Protection

Date 03/05/2008
 API # 47-013-04513

State of West Virginia
 Division of Environmental Protection
 Section of Oil and Gas
 Well Operator's Report of Well Work

Farm Name: Joan M Satterfield

Operator Well ID: Satterfield #1

LOCATION Elevation: 1283'
 District: Sherman
 Latitude: 1780 ft South of 38° 53' 45.8"
 Longitude: 7480 ft West of 81° 05' 00"

Quadrangle: Grantsville 7.5
 County: Calhoun

Company: Satterfield Production Inc.
 P.O. Box 757
 Grantsville, WV 26147

Casing & Tubing	Used in Drilling	Left in Well	Cement Fill-Up Cu.Ft.
7"	310' KB	310' KB	71
4 1/2"	2331' KB	2331' KB	77

Agent: Stephen L Satterfield
 Inspector: Ed Gainer
 Date Permit Issued: 05/24/2004
 Date Well work commenced: 08/31/2004
 Date Well Work completed: 09/03/2004
 Verbal Plugging Permission
 Granted on / /
 Rotary Cable Rig
 Total Depth (ft): DTD:2450' LDT:2458'
 Fresh Water Depth (ft): 35'
 Salt Water Depth (ft.): 1292'
 Is coal being mined in area (Yes No
 Coal Depths (ft): NA

Open Flow Data

1st Producing Formation Big Injun Pay Zone Depth 2216' ft to 2222' ft
 Gas: Initial Open Flow Mcf/day Oil: Initial Open Flow bbbl/day
 Final Open Flow 25 Mcf/day Final Open Flow bbbl/day
 Time of Open Flow between Initial and Final Tests 72 hours
 Static Rock Pressure 140 psig after 72 hours

2nd Producing Formation Pay Zone Depth ft to ft
 Gas: Initial Open Flow Mcf/day Oil: Initial Open Flow bbbl/day
 Final Open Flow Mcf/day Final Open Flow bbbl/day
 Time of Open Flow between Initial and Final Tests hours
 Static Rock Pressure psig after hours

3rd Producing Formation Pay Zone Depth ft to ft
 Gas: Initial Open Flow Mcf/day Oil: Initial Open Flow bbbl/day
 Final Open Flow Mcf/day Final Open Flow bbbl/day
 Time of Open Flow between Initial and Final Tests hours
 Static Rock Pressure psig after hours

NOTE: ON BACK OF THIS FORM PUT THE FOLLOWING: 1). DETAILS OF PERFORATED INTERVALS, FRACTURING OR STIMULATING, PHYSICAL CHANGE, ETC. 2). THE WELL LOG WHICH IS A SYSTEMATIC DETAILED GEOLOGICAL RECORD OF ALL FORMATIONS, INCLUDING COAL ENCOUNTERED BY THE WELLBORE.

Signed: [Signature]
 SATTERFIELD PRODUCTION INC
 By: Stephen L Satterfield
 Date: 3/05/08

