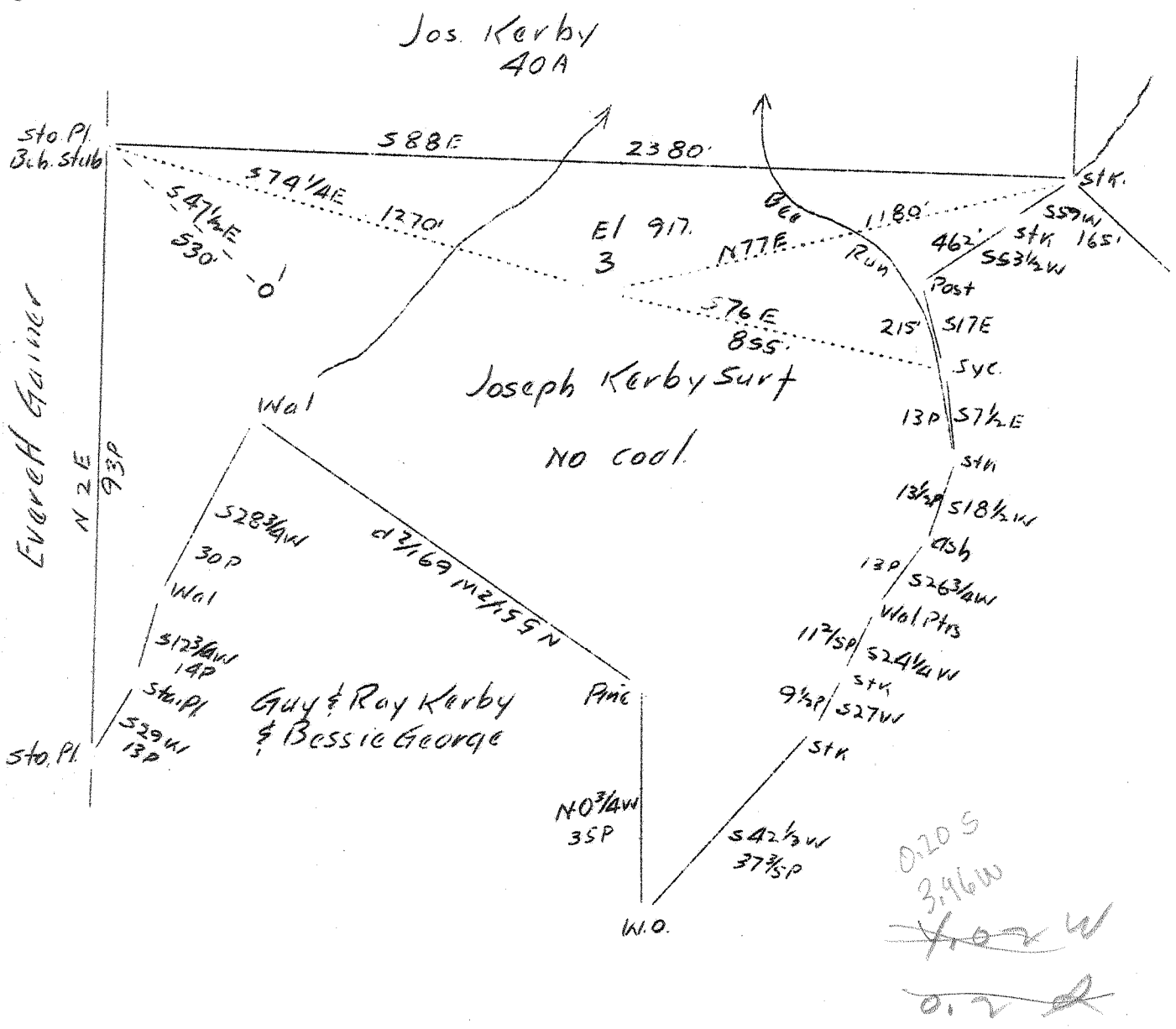


0 1 2 3 + LATITUDE 38° 55'

1 LONGITUDE 81° 05'

2

3



Abandonment

Company	South Penn Oil Co
Address	411 8th Ave., Pittsburgh, Pa
Farm	G. W. Hardman
Tract	Acres 363 Lease No. 64808
Well (Farm) No.	3 Serial No.
Quadrangle	Arnoldsburg
County	Calhoun
District	Center
Engineer	E. C. Tabler
Engineer's Registration No.	
File No.	Drawing No.
Date	5-5-37 Scale 1" - 400'

STATE OF WEST VIRGINIA
 Department of Mines
 OIL AND GAS DIVISION
 Charleston

WELL LOCATION MAP

File No. CAL-75A

Denotes location of well on U. S. Topographic Maps, scale 1 to 62,500 latitude and longitude lines being represented by border lines as shown.

Denotes one inch spaces on border line of original tracing.

202

WEST VIRGINIA DEPARTMENT OF MINES
OIL AND GAS DIVISION

WELL RECORD

Permit No. CAL-75 - A

Oil or Gas Well OIL
(Kind)

Company SOUTH PENN OIL COMPANY
 Address C. of C. Bldg. Pittsburgh, Pa.
 Farm G. W. Harman Acres 363
 Location (waters) Bee Run
 Well No. 3 Elev. 917
 District Center County Calhoun
 The surface of tract is owned in fee by Joseph Kerby
 Address Joker, W. Va.
 Mineral rights are owned by Allen Harman
 Address Mt. Zion, W. Va.
 Drilling commenced June 27, 1912
 Drilling completed August 17, 1912
 Date shot Oct. 1, 1935 Depth of shot 2311-2343
 Open Flow /10ths Water in - Inch
 /10ths Merc. in - Inch
 Volume - Cu. Ft.
 Rock Pressure - lbs. - hrs.
 Oil 28 bbls., 1st 24 hrs.
 Fresh water - feet - feet
 Salt water 1700-1780 feet - feet

Casing and Tubing	Used in Drilling	Left in Well	Packers
Size			
16			Kind of Packer <u>-</u>
13			<u>-</u>
10	<u>388 (Pulled)</u>		Size of <u>-</u>
8 1/4	<u>988' 1" Pulled</u>		<u>-</u>
6 5/8	<u>1852' 5"</u>		Depth set <u>-</u>
5 3/16			<u>-</u>
3			Perf. top <u>-</u>
2			Perf. bottom <u>-</u>
Liners Used			Perf. top <u>-</u>
<u>Cond.</u>	<u>16</u>		Perf. bottom <u>-</u>

CASING CEMENTED - SIZE - No. FT. - Date -
 COAL WAS ENCOUNTERED AT - FEET - INCHES
- FEET - INCHES - FEET - INCHES
- FEET - INCHES - FEET - INCHES

Formation	Color	Hard or Soft	Top	Bottom	Oil Gas or Water	Depth Found	Remarks
Dunkard Sand			985	1090			
Gas Sand			1105	1170			
Salt Sand			1500	1670			
Little Lime			1782	1803			
Big Lime			1830	1913			
Big Injun Sand			1913	1964			
Berea Sand			2311	2343			
					Water	1700-1780	Hole full
					Oil	2323-2338	
					Gas	2323-2338	
Total Depth				2343			

