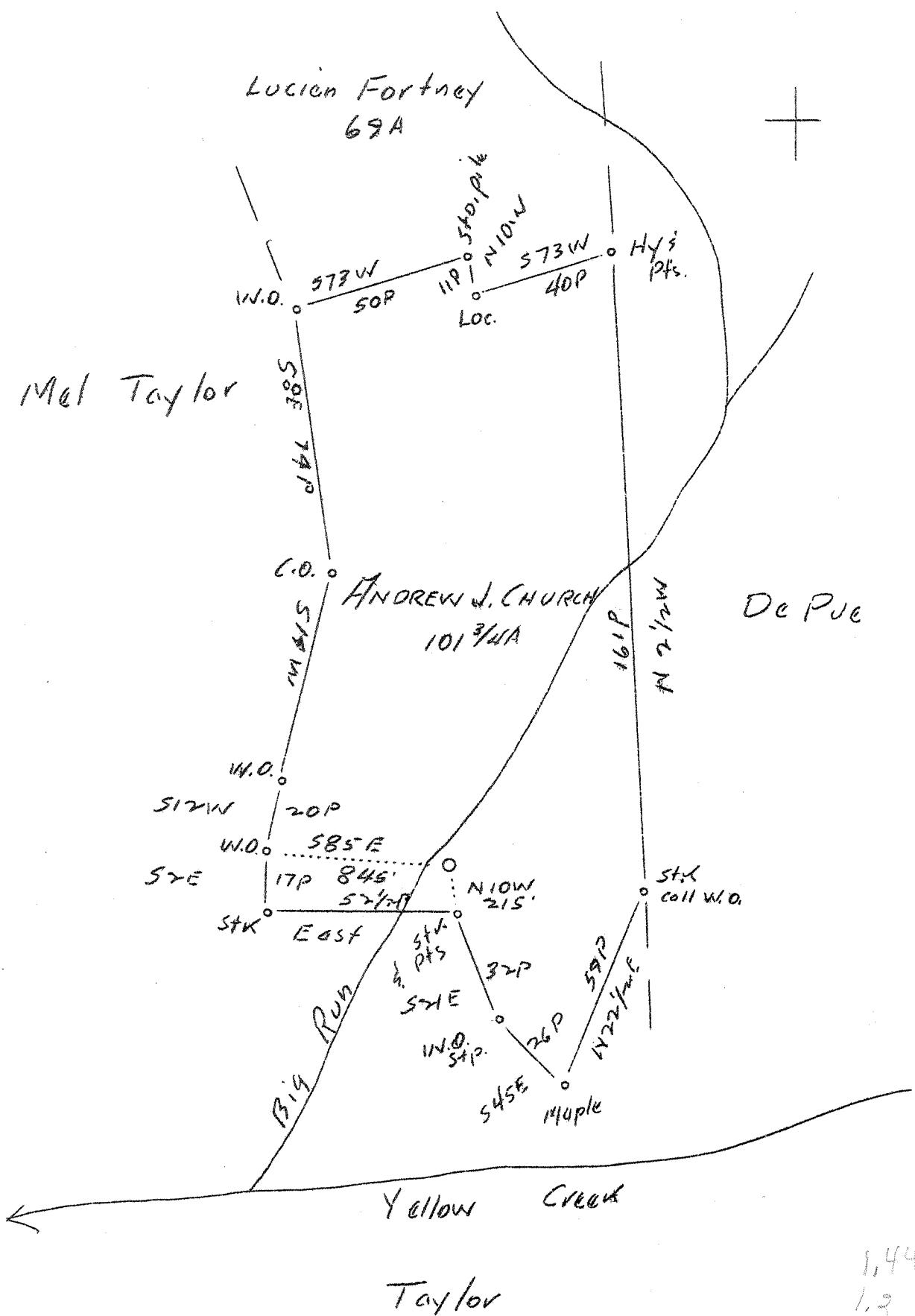


LATITUDE 39° 00'

LONGITUDE 81° 05'



Abd.

1,44 W
1.2 S

Company	M. C. & G. K. Rogers Co.
Address	Pittsburgh, Pa.
Farm	Andrew J. Church
Tract	Bennett
Acres	101-3/4
Well (Farm) No.	Two
Elevation (SP)	724'
County	Calhoun
District	Sheridan
Engineer	Bruce Ferrell, Jr.
Eng. Reg. No.	-
Date	Sept. 6, 1938
Scale	40 poles = 1"

Qual. — analyzing M.C.

STATE OF WEST VIRGINIA
 Department of Mines
 OIL & GAS DIVISION
 Charleston

WELL LOCATION MAP

File No. CAL 84A

x Denotes location of well on U. S. Topographic Maps, scale 1 to 62,500, latitude and longitude lines being represented by border lines as shown.

- Denotes one inch spaces on border line of original tracing.