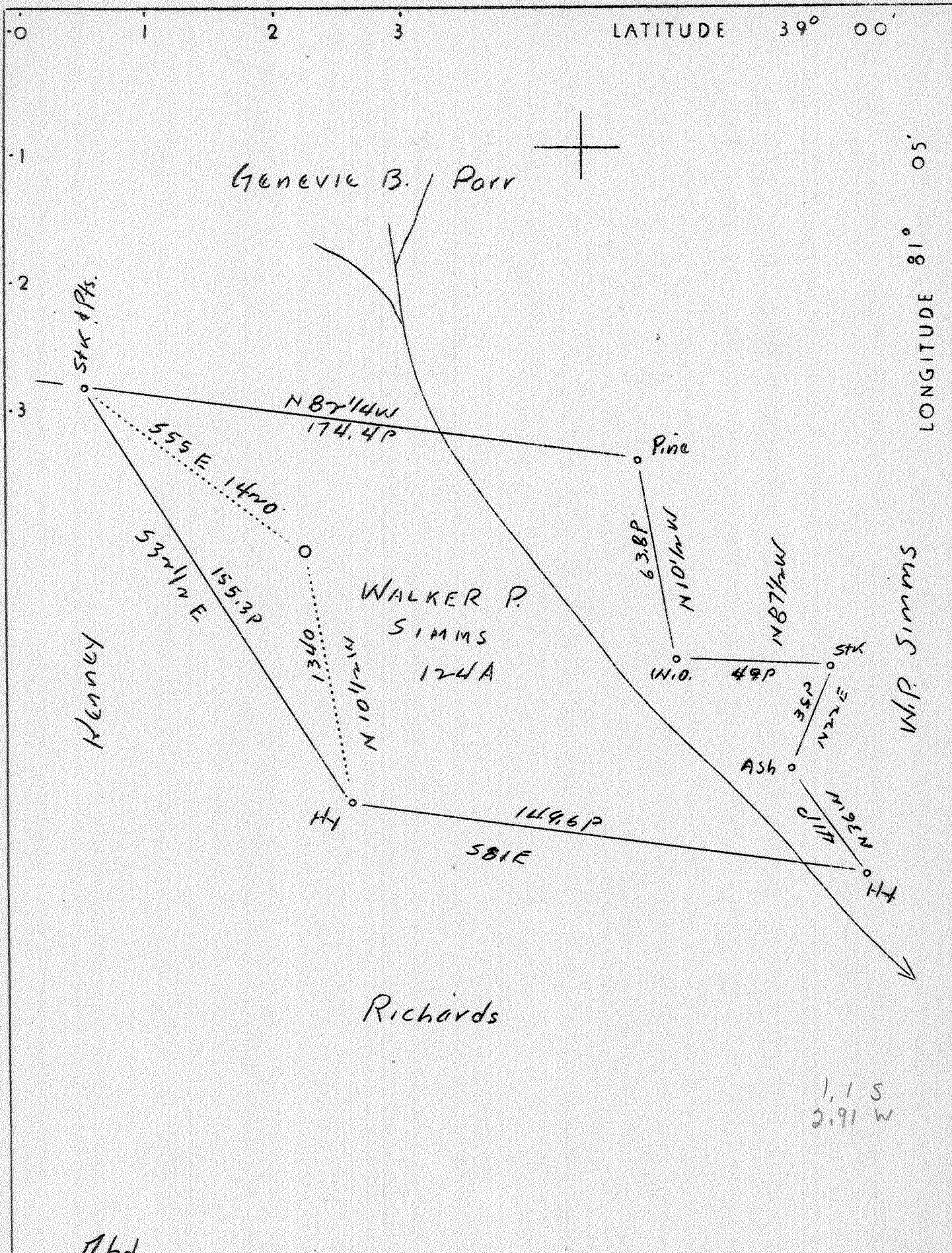


27



Abd.

Company	M. C. & G. K. Rogers Co.
Address	Pittsburgh, Pa.
Farm	Walker P. Simms
Tract	Fisher
Acres	124
Well (Farm) No.	11
Elevation (SP)	1020'
Quadrangle	Arnoldsburg
County	Calhoun
District	Sheridan
Engineer	Bruce Ferrell, Jr.
Eng. Reg. No.	-
Date	Sept. 6, 1938
Scale	40 poles = 1"

STATE OF WEST VIRGINIA  
 Department of Mines  
 OIL & GAS DIVISION  
 Charleston

WELL LOCATION MAP

File No. CAL-86A

x Denotes location of well on U. S. Topographic Maps, scale 1 to 62,500, latitude and longitude lines being represented by border lines as shown.

- Denotes one inch spaces on border line of original tracing.