

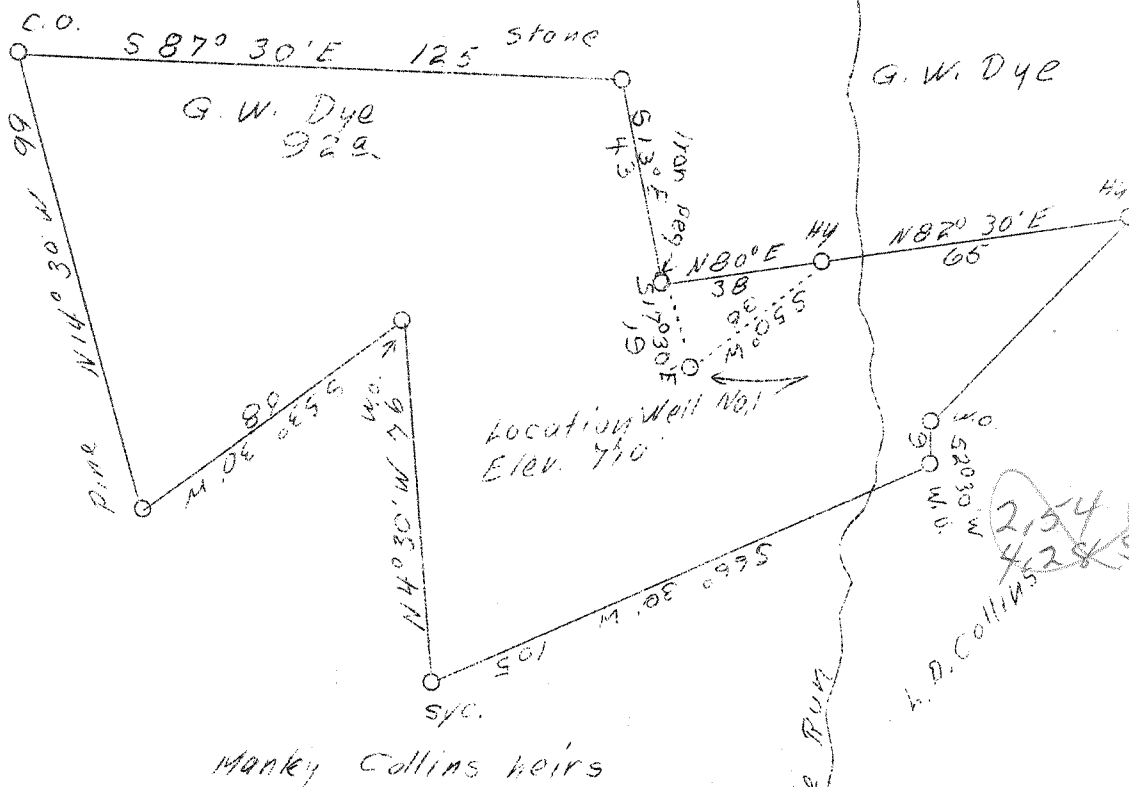
LATITUDE 39° 05'

LONGITUDE 81° 05'

4.215
2152W

FRANK MORRISON

Hol Andrews



ABD.

Company	Richter Oil Co.
Address	Brohard, W. Va.
Farm	G. W. Dye
Tract	One
Acres	92
Well (Farm) No.	One
Elevation (SP)	770'
Quadrangle	Harrisville S.C.
County	Calhoun
District	Sheridan
Engineer	Logan McDonald
Eng. Reg. No.	610
Date	Sept. 15, 1938
Scale	1" - 40 rods

STATE OF WEST VIRGINIA
 Department of Mines
 OIL & GAS DIVISION
 Charleston

WELL LOCATION MAP
 File No. Cal-89-A

x Denotes location of well on U. S. Topographic Maps, scale 1 to 62,500, latitude and longitude lines being represented by border lines as shown.

- Denotes one inch spaces on border line of original tracing.

Cal
89

could not find location
No. 221

Sheridan District, Calhoun County, W. Va.

By Richter Oil Co., Brookard, W. Va.

? Abandoned? under permit Cal-58.7A

On 90 acres, on Gale Fork.

Elevation.....

Surface owned by G. W. Dye, Freed, W. Va., and minerals by same.

10" casing, 288' (pulled); 8 1/2", 885' (pulled); 6 3/8", 1216' (pulled);

5", 1723'.

Abandonment? reported to Dept. of Mines (not dated).

Record to ROT from Mrs. Griffith Sept. 22, 1938.

	Top.	Bottom.
Red rock	560	- 570
Little Dunkard Sand	765	- 785
Big Dunkard Sand	865	- 880
Long streak (sand)	1080	- 1238
Sand	1300	- 1360
Salt Sand	1536	- 1700
Little Lime	1700	-
Big Lime	1723	- 1789
Keener Sand	1789	-
Big Injun Sand (gas, 1811'; oil, 1831')	1806	- 1843
Total depth		1889

221

WEST VIRGINIA DEPARTMENT OF MINES
OIL AND GAS DIVISION

WELL RECORD

Permit No. 2AL-89-A

Oil or Gas Well _____
(Kind)

Company Richter Oil Company
 Address Brohard, W. Va.
 Farm G. W. Dye Acres 90
 Location (waters) Cole Fork
 Well No. 1 Elev. 770'
 District Sheridan County Calhoun
 The surface of tract is owned in fee by G. W. Dye
 Address Freed, W. Va.
 Mineral rights are owned by G. W. Dye
 Address Freed, W. Va.
 Drilling commenced _____
 Drilling completed _____
 Date shot _____ Depth of shot _____
 Open Flow /10ths Water in _____ Inch
 /10ths Merc. in _____ Inch
 Volume _____ Cu. Ft.
 Rock Pressure _____ lbs. _____ hrs.
 Oil _____ bbls., 1st 24 hrs.
 Fresh water _____ feet _____ feet
 Salt water _____ feet _____ feet

Casing and Tubing	Used in Drilling	Left in Well	Packers
Size			
16			Kind of Packer
13			
10	288'		Size of
8 1/4	365'		
6 5/8	1216'		Depth set
5 3/16		1723'	
3			Perf. top
2			Perf. bottom
Liners Used			Perf. top
			Perf. bottom

CASING CEMENTED _____ SIZE _____ No. FT. _____ Date _____
 COAL WAS ENCOUNTERED AT _____ FEET _____ INCHES
 _____ FEET _____ INCHES _____ FEET _____ INCHES
 _____ FEET _____ INCHES _____ FEET _____ INCHES

Formation	Color	Hard or Soft	Top	Bottom	Oil Gas or Water	Depth Found	Remarks
Red Rock			560	570			
Little Dunkard			765	785			
Big Dunkard			865	880			
Long Streak			1080	1238			
Sand			1300	1360			
Salt Sand			1536	1700			
Little Lime			1700				
Big Lime			1723	1789			
Keener Sand			1789				
Kinjun			1806	1843'	Gas 1814' Oil 1821'		
Total Depth						1889'	

SEP 22 1938