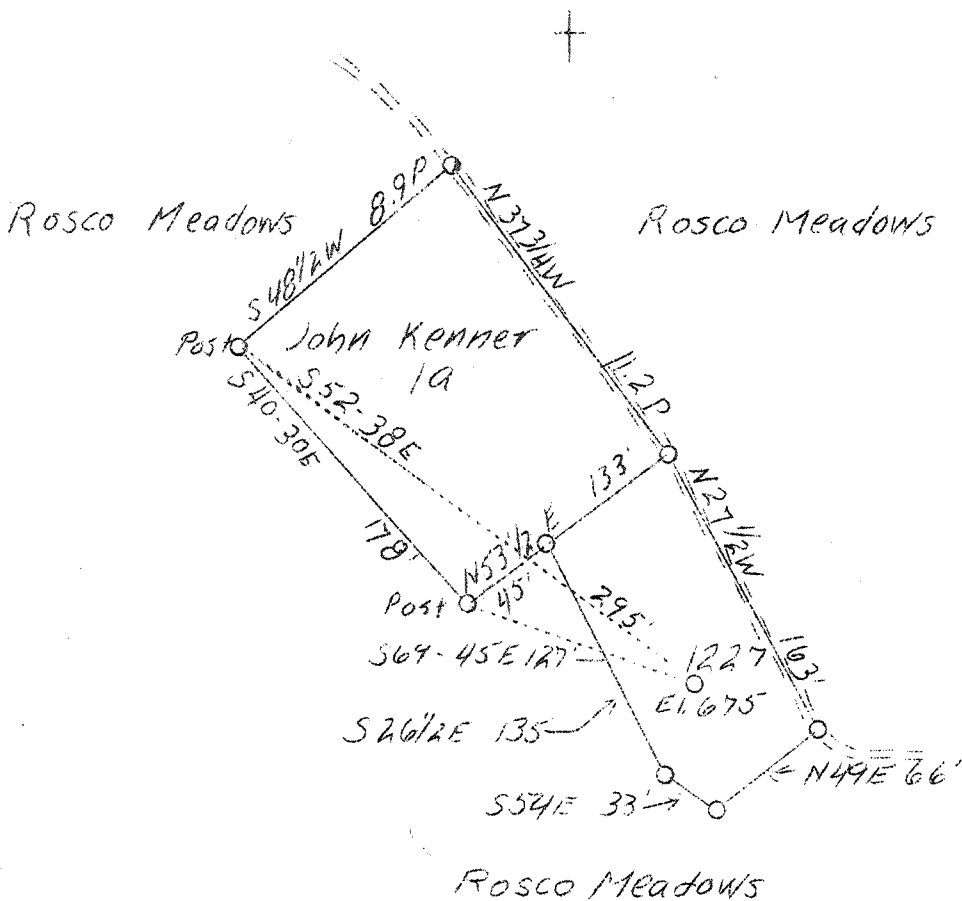


AM

LATITUDE 38°55'

LONGITUDE 81°10'



W - 3.9  
S - 3.6

ABD.

F.B. 668 P19 S39 W36 Sh. 42-52

|                |                        |
|----------------|------------------------|
| Company        | Hope Const. & Ref. Co. |
| Address        | Clarksburg, W. Va.     |
| Farm           | John Kemner            |
| Acres          | 1                      |
| Lease No.      | 5632                   |
| Serial No.     | 1227                   |
| Elevation (SL) | 675                    |
| Quadrangle     | Arnoldsburg W          |
| County         | Calhoun                |
| District       | Lee                    |
| Engineer       | W. M. Bowers           |
| Eng. Reg. No.  | 900                    |
| Date           | June 14, 1939          |
| Scale          | 1" = 100'              |

STATE OF WEST VIRGINIA  
Department of Mines  
Oil & Gas Division  
Charleston

WELL LOCATION MAP

File No. Cal-101-A

x Denotes location of well on U. S. Topographic Maps, scale 1 to 62,500, latitude and longitude lines being represented by border lines as shown.

- Denotes one inch spaces on border line of original tracing.

STATE OF WEST VIRGINIA  
DEPARTMENT OF MINES  
OIL AND GAS DIVISION

254

WELL RECORD

011

Permit No. *101-A*  
*Arnoldburg, W.C.*

Oil or Gas Well (Kind) 011

Company Hope Construction & Refining Company  
Address Clarksburg, W. Va.  
Farm John Kemmer Acres 1  
Location (waters) \_\_\_\_\_  
Well No. 1227 Elev. 675  
District Lee County Calhoun  
The surface of tract is owned in fee by George Kemmer  
Address Spencer, W. Va.  
Mineral rights are owned by \_\_\_\_\_  
Address \_\_\_\_\_  
Drilling commenced 4-9-1906  
Drilling completed 5-18-1906  
Date shot 11-16-1916 Depth of shot 2235-2235  
Open Flow /10ths Water in \_\_\_\_\_ Inch  
/10ths Merc. in \_\_\_\_\_ Inch  
Volume \_\_\_\_\_ Cu. Ft.  
Rock Pressure \_\_\_\_\_ lbs. \_\_\_\_\_ hrs.  
Oil \_\_\_\_\_ bbls., 1st 24 hrs.  
Fresh water None recorded feet \_\_\_\_\_ feet  
Salt water 1475 feet \_\_\_\_\_ feet

| Casing and Tubing | Used in Drilling | Left in Well | Packers        |
|-------------------|------------------|--------------|----------------|
| Size              |                  |              | Kind of Packer |
| 16                |                  |              |                |
| 13                |                  |              |                |
| 10                | 350              | Pulled       | Size of        |
| 8 1/2             | 1012             | Pulled       |                |
| 6 5/8             | 1718             | 1718         | Depth set      |
| 5 3/16            |                  |              |                |
| 3                 |                  |              | Perf. top      |
| 2                 | 2233             | 2233         | Perf. bottom   |
| Liners Used       |                  |              | Perf. top      |
|                   |                  |              | Perf. bottom   |

CASING CEMENTED \_\_\_\_\_ SIZE \_\_\_\_\_ No. FT. \_\_\_\_\_ Date \_\_\_\_\_  
**Not cemented**  
COAL WAS ENCOUNTERED AT \_\_\_\_\_ FEET \_\_\_\_\_ INCHES  
\_\_\_\_\_ FEET **No coal** INCHES \_\_\_\_\_ FEET \_\_\_\_\_ INCHES  
\_\_\_\_\_ FEET \_\_\_\_\_ INCHES \_\_\_\_\_ FEET \_\_\_\_\_ INCHES

| Formation        | Color | Hard or Soft | Top  | Bottom | Oil Gas or Water | Depth Found | Remarks |
|------------------|-------|--------------|------|--------|------------------|-------------|---------|
| Cow Run Sand     |       |              | 1005 | 1028   |                  |             |         |
| First Salt Sand  |       |              | 1365 | 1405   |                  |             |         |
| Second Salt Sand |       |              | 1456 | 1556   | Water            | 1475        |         |
| Maxon Sand       |       |              | 1630 | 1685   |                  |             |         |
| Big Lime         |       |              | 1705 | 1795   |                  |             |         |
| Big Injun Sand   |       |              | 1800 | 1882   |                  |             |         |
| Berea Sand       |       |              | 2212 | 2240   | 011              | 2227        |         |
| Total Depth      |       |              | 2243 |        |                  |             |         |

