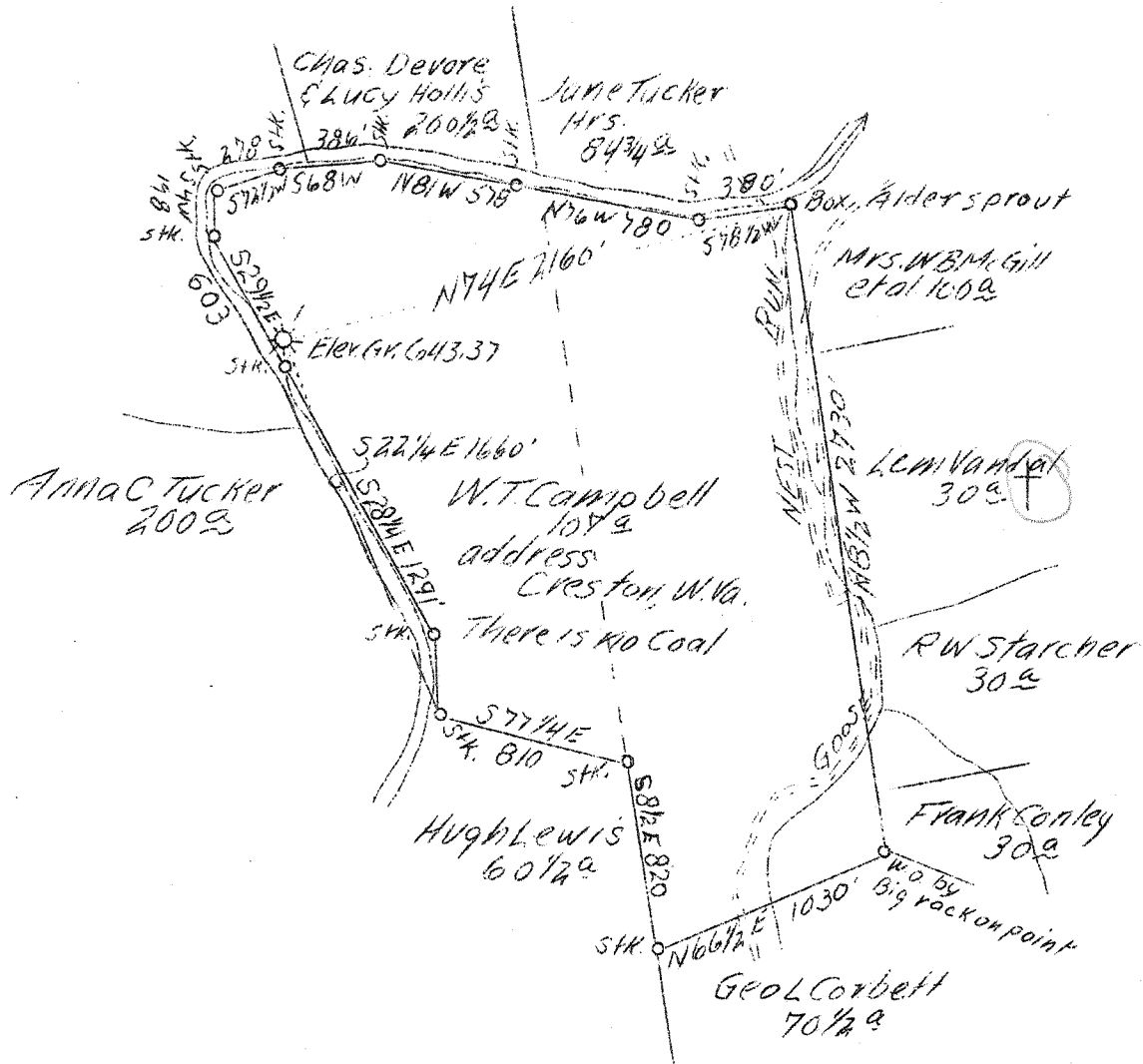


M

LATITUDE 39°00'

LONGITUDE 81°15'



5.342
1.460

Well to be abandoned

Company	South Penn Oil Co.
Address	411-7th Ave., Pgh. Pa.
Farm	W. T. Campbell
Acres	107
Lease No.	63326 - 73653
Well (Farm) No.	1
Quadrangle	Spencer
County	Calhoun
District	Lee
Engineer	E. C. Tabler
Eng. Reg. No.	-
Date	May 9, 1939
Scale	1" = 800'

STATE OF WEST VIRGINIA
 Department of Mines
 OIL & GAS DIVISION
 Charleston

WELL LOCATION MAP

File No. Cal-102-A

x Denotes location of well on U. S. Topographic Maps, scale 1 to 62,500, latitude and longitude lines being represented by border lines as shown.

- Denotes one inch spaces on border line of original tracing.

WEST VIRGINIA DEPARTMENT OF MINES
OIL AND GAS DIVISION

249

WELL RECORD

GAS

Permit No. 1

Oil or Gas Well (Kind) _____

Company South Penn Oil Company
 Address 411 Seventh Ave., Pittsburgh, Pa.
 Farm W. T. Campbell Acres 107
 Location (waters) West Fork River
 Well No. 1 Elev. 643.37'
 District Lee County Calhoun
 The surface of tract is owned in fee by W.T. Campbell
Creston, W. Va.
 Mineral rights are owned by M.A. Campbell et al
Creston, W. Va.
 Drilling commenced July 28, 1920
 Drilling completed September 8, 1920
 Date shot _____ Depth of shot _____
 Open Flow 12 /10ths Water in _____ Inch
 _____ /10ths Merc. in _____ Inch
 Volume _____ 146 mcf Cu. Ft.
 Rock Pressure _____ lbs. _____ hrs.
 Oil _____ bbls., 1st 24 hrs.
 Fresh water _____ feet _____ feet
 Salt water 1275 feet _____ feet

Casing and Tubing	Used in Drilling	Left in Well	Packers
Size			
16			Kind of Packer _____
13			_____
10	382'		Size of _____
8 1/4	808' (Pulled 58')		2X6-5/8X16
6 5/8	1446'		Depth set _____
5 3/16			1500'
3	60'		Perf. top _____
2	1500'		Perf. bottom _____
Liners Used			Perf. top _____
Cond. 16			Perf. bottom _____

CASING CEMENTED _____ SIZE _____ No. FT. _____ Date _____
 COAL WAS ENCOUNTERED AT _____ FEET _____ INCHES
 _____ FEET _____ INCHES _____ FEET _____ INCHES
 _____ FEET _____ INCHES _____ FEET _____ INCHES

Formation	Color	Hard or Soft	Top	Bottom	Oil Gas or Water	Depth Found	Remarks
Sand			16	35			
Shell			35	55			
Shale			55	95			
Lime			95	120			
Sand			120	140			
Red Rock			140	190			
Shale			190	210			
Red Rock			210	250			
Slate			250	330			
Red Rock			330	380			
Lime			380	400			
Red Rock			400	425			
Lime			425	468			
Pink Rock			468	493			
Red Rock			493	525			
Lime			525	560			
Sand			560	600			
Lime			600	620			
Sand			620	660			
Lime			660	690			
Sand			690	702			
First Cow Run Sand			702	787			
Shale			787	797	Oil	752-762	very small sho
Second Cow Run Sand			797	962			
Slate			962	992			
Sand			992	1005			
White Slate			1005	1015			
Sand			1015	1036			
Black shale			1036	1091			
Lime			1091	1106			
Slate			1106	1173			
Shells			1173	1175			
Salt Sand			1175	1300	Water	1275	



Cont'd.

AUG 24 1920

Formation	Color	Hard or Soft	Top	Bottom	Oil, Gas or Water	Depth Found	Remarks
Cont'd.							
Slate			1300	1366			
Lime			1366	1396			
Pink Cave			1396	1411			
Big Lime			1411	1528			
Big Injun Sand			1528	1567			
					Gas	1530-1540	
					Gas	1550-1555	
Sand & Lime			1567	2150			
Total Depth				2150			
Filled up to				1560			
Present Total Depth				1560			

Date June 15, 19 39

APPROVED SOUTH PENN OIL COMPANY, Owner

By Elton E. Young Land Agent

(Title)