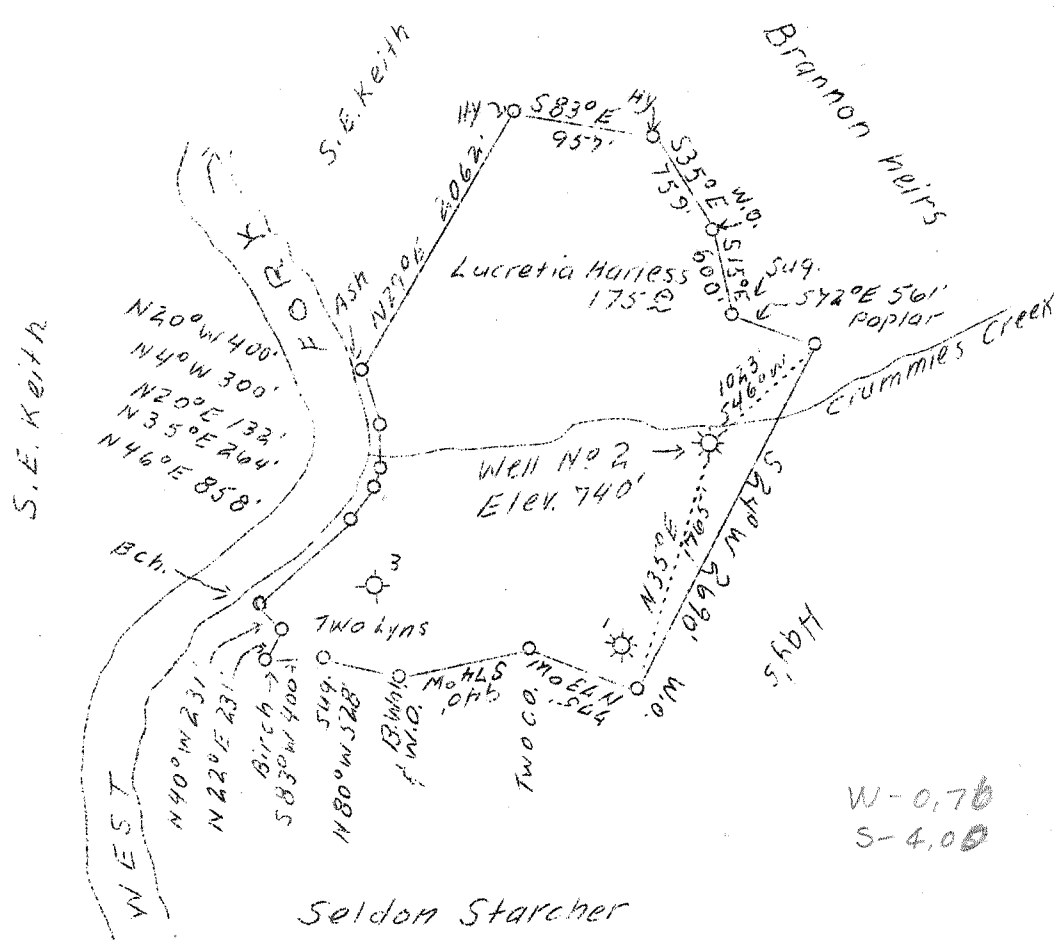


221

LATITUDE 38° 50'

LONGITUDE 81° 05'



W-0.76
S-4.00

ABD.

Company	G. L. Cabot, Inc.,	STATE OF WEST VIRGINIA Department of Mines OIL & GAS DIVISION Charleston WELL LOCATION MAP File No. <u>Cal-106-A</u> x Denotes location of well on U. S. Topographic Maps, scale 1 to 62,500, latitude and longitude lines being represented by border lines as shown. - Denotes one inch spaces on border line of original tracing.
Address	Grantsville, W. Va.	
Farm	Lucretia Harless	
Tract	1	
Acres	175	
Well (Farm) No.	Two	
Serial No.	825	
Elevation (S.L)	740	
Quadrangle <i>SC</i>	Arnoldsburg	
County	Calhoun	
District	Lee	
Engineer	Logan McDonald	
Eng. Reg. No.	610	
Date	July 27, 1939	
Scale	1" = 1320'	

253

Well Purchased from Crummies Creek

WELL RECORD

Handwritten: Wood Col. 66-11, Underlying H.C.

Handwritten: J.L.P. 29

SERIAL NO. 82 5 **Fuel Company** **OPERATING DISTRICT** Grantsville **Map Square** 52-57
FARM Lucretia Harless **No.** 1 **LEASE NO.**
COUNTY Calhoun **TOWNSHIP** Lee **STATE** West Virginia
DRILLING COMMENCED ? **DRILLING COMPLETED** ?
CONTRACTOR ? **ADDRESS**

ROCK PRESSURE RECORD			PRODUCING SAND RECORD			
Sand	lbs., in	hrs.	Sand, from	to	Init. Prod.	M. C. F. Gas
Sand	lbs., in	hrs.	Sand, from	to	Init. Prod.	M. C. F. Gas
Sand	lbs., in	hrs.	Sand, from	to	Init. Prod.	M. C. F. Gas

OPEN FLOW		CASING RECORD				
Time, Condition:		SIZE	WEIGHT	USED IN DRILLING	LEFT IN WELL	HOW CASING SET
Water	inch opening					
0ths Mercury in		2"			1910	
Volume	M. C. F.					
24 HOUR PRODUCTION TEST AFTER TUBING						
42	M. C. F. A.S.	Line Pressure				
	Bbls. Oil	in 24 Hours				
TUBED AND SHUT IN						
Date						
Checker, Size	Kind					
Depth	Size Anchor					
rf. Top	Bottom					
rf. Top	Bottom					

SHOOTING RECORD	
Shot with	from 1890 to 1905 Date
ELEVATION: 744.5	Gauge Before Shot Gauge Min. Hrs. After Shot 42 MCF

FORMATION	COLOR	TOP	BOTTOM	STEEL LINE MEASUREMENTS	HARD OR SOFT	OIL, GAS OR WATER	DEPTH FOUND	DISTANCE ABOVE OR BELOW S. L.	REMARKS
Loam and Sand		0	210						
Rock	Red	210	300						
Sand		300	350						
Rock	Red	350	420						
Slate	White	420	500						
Sand		500	580						
Rock	Red	580	620						
Little Dunkard		620	695						
Slate	White	695	790						
Big Dunkard		790	1020						
Slate	White	1020	1070						
Gas Sand		1070	1140						
Slate	White	1140	1200						
Sand		1200	1280						
Slate	White	1280	1320						
Sand		1320	1415						
Slate	Black	1415	1430						
Salt Sand		1430	1535						
Slate	White	1535	1595						
2d Sand		1595	1660						
Sand		1660	1705						
Little Lime		1705	1735						
Blue Monday		1735	1740						
Pencil Cave		1740	1750						
Big Lime		1750	1854						
Keener Sand		1854	1864						
Big Injun		1864	1905						
						Gas	1870		- 1st pay
						"	1890		- 2d pay
						Shot	1890 to 1905		- 6/10 W in 1"
									26 mcf
Total Depth			1915						

Handwritten: 1905, 2600, 1140

