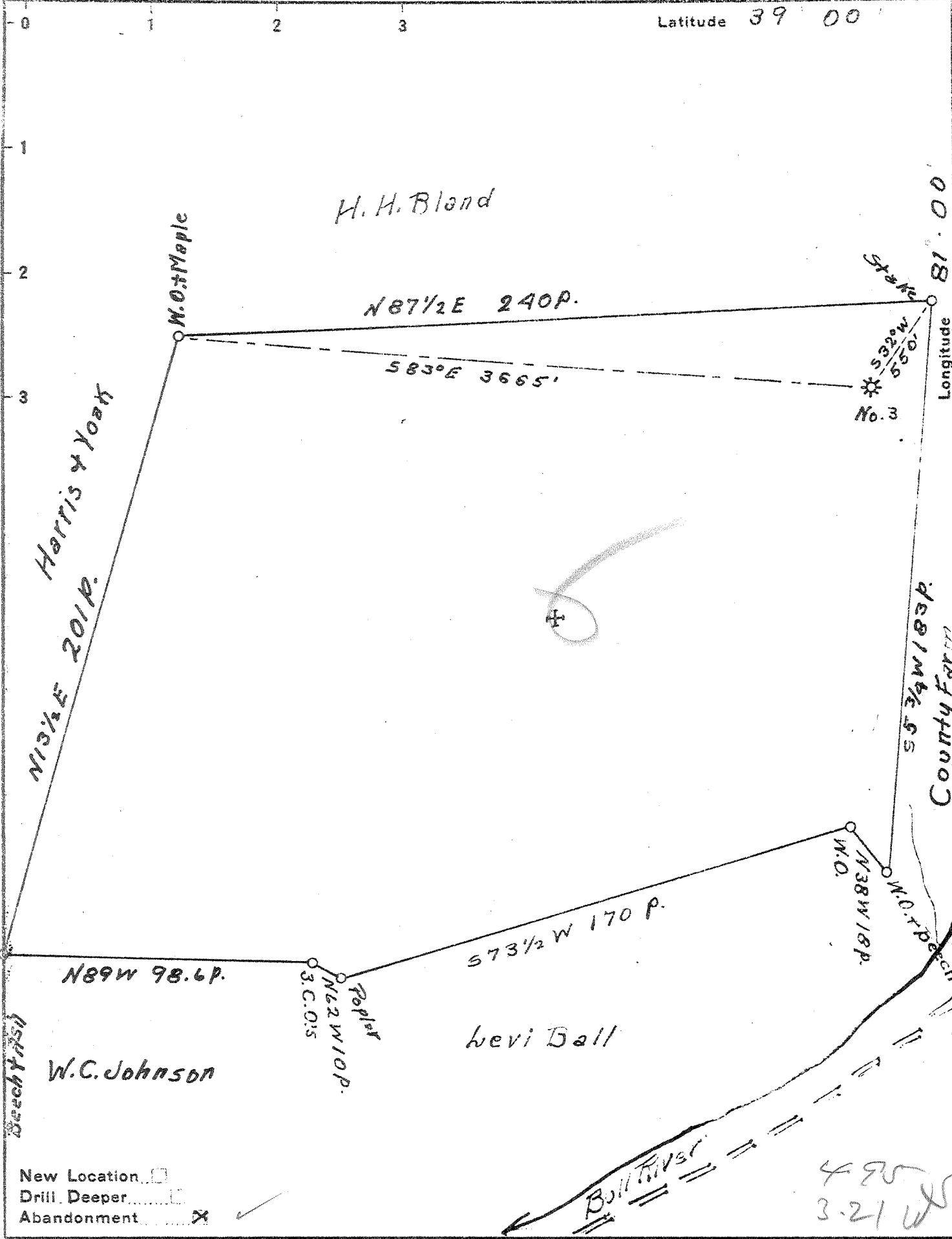


Latitude 39 00



New Location

Drill Deeper

Abandonment

Company G. L. Cabot Inc.

Address CHARLESTON, W. VA.

Farm Levi & Oak Ball

Tract _____ Acres 319 Lease No. _____

Well (Farm) No. 3 Serial No. 139

Elevation (Spirit Level) 1070'

Quadrangle Arnoldsburg

County Calhoun District Sherman

Engineer Bruce Ferrell, Jr.

Engineer's Registration No. _____

File No. _____ Drawing No. _____

Date Aug. 8, 1942 Scale 40p = 1"

STATE OF WEST VIRGINIA
DEPARTMENT OF MINES
OIL AND GAS DIVISION
CHARLESTON

WELL LOCATION MAP
FILE NO. CAL-158-A

+ Denotes location of well on United States Topographic Maps, scale 1 to 62,500, latitude and longitude lines being represented by border lines as shown.

- Denotes one inch spaces on border line of original tracing.