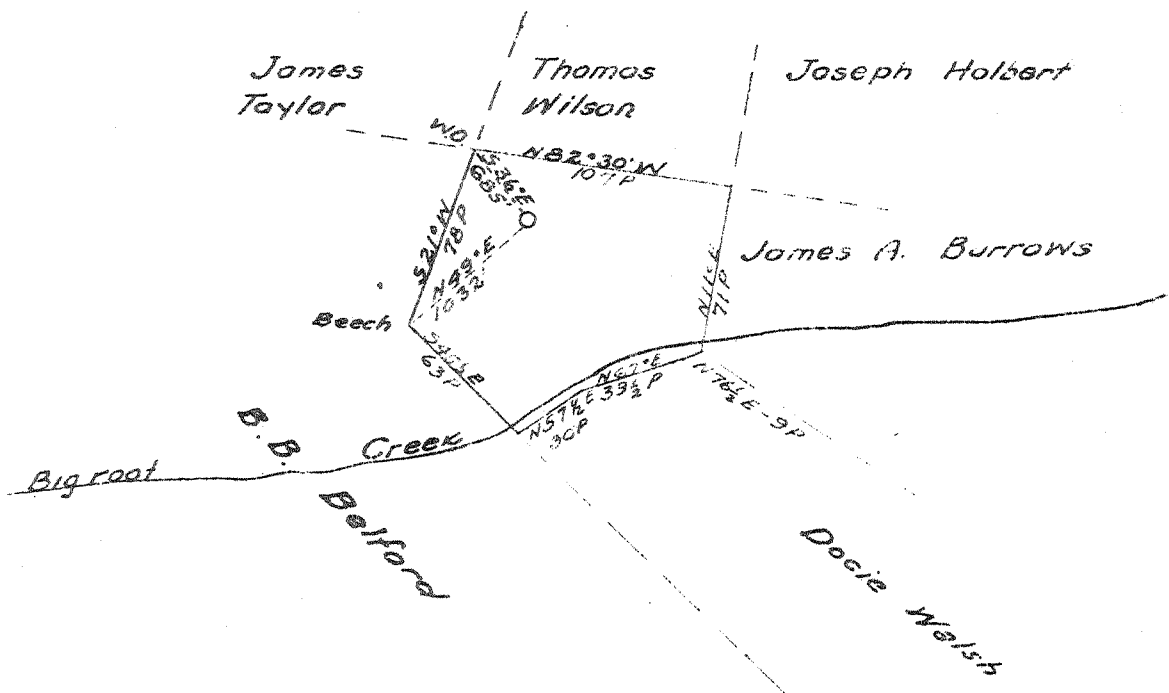


Latitude 39 00
 Longitude 81 05



15'
 2385
 150

New Location...
 Drill Deeper...
 Abandonment... X

Company Godfrey L. Cabot Inc.
 Address 900 Union Bldg Charleston W. Va.
 Farm A. J. Holbert
 Tract _____ Acres 67.2 Lease No. 1-69
 Well (Farm) No. 2 Serial No. 105
 Elevation (Spirit Level) 1151
 Quadrangle Arnoldsburg
 County Calhoun District Center
 Engineer Ray Boston
 Engineer's Registration No. _____
 File No. _____ Drawing No. _____
 Date 6-18-43 Scale 1" = 1320'

STATE OF WEST VIRGINIA
 DEPARTMENT OF MINES
 OIL AND GAS DIVISION
 CHARLESTON

WELL LOCATION MAP
 FILE NO. CAL-170-A

+ Denotes location of well on United States Topographic Maps, scale 1 to 52,500, latitude and longitude lines being represented by border lines as shown.
 - Denotes one inch spaces on border line of original tracing.