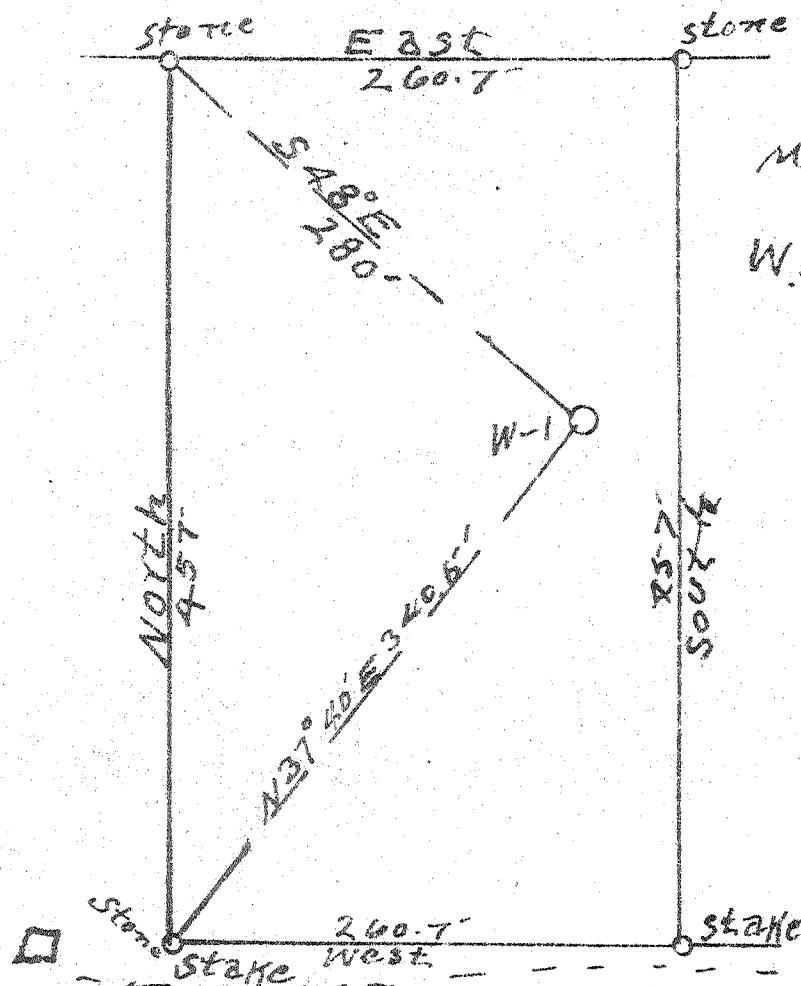


Henry Snider



Michael and W.W. Knight

Robert Knight

15' / 5.375' / 15W

- New Location
- Drill Deeper
- Abandonment

Company BOWSER GAS & OIL CO.
 Address PARKERSBURG, W.VA.
 Farm S.R. Clayton
 Tract _____ Acres 2.7 Lease No. _____
 Well (Farm) No. 1 Serial No. _____
 Elevation (Spirit Level) 1020
 Quadrangle HARRISVILLE
 County CALHOUN District CENTER
 Engineer J.E. Anderson
 Engineer's Registration No. Wood Co. Surveyor
 File No. _____ Drawing No. _____
 Date 8-18-43 Scale 1 in = 100'

STATE OF WEST VIRGINIA
 DEPARTMENT OF MINES
 OIL AND GAS DIVISION
 CHARLESTON

WELL LOCATION MAP
 FILE NO. CAL-192-A

+ Denotes location of well on United States Topographic Maps, scale 1 to 62,500, latitude and longitude lines being represented by border lines as shown.

- Denotes one inch spaces on border line of original tracing.