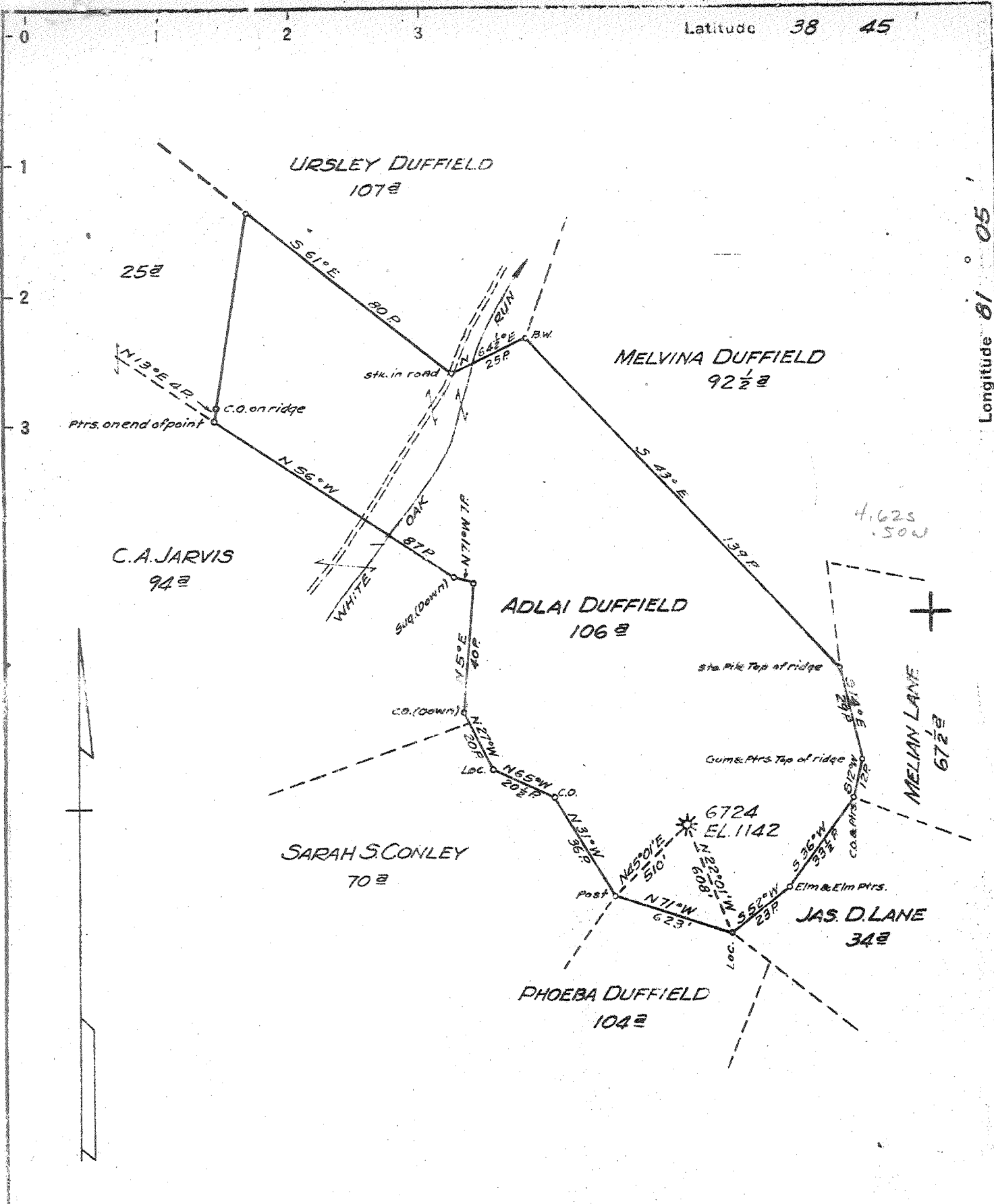


M

Latitude 38 45

Longitude 81 05



- New Location
- Drill Deeper
- Abandonment

Map Sheet 110 Squares S52W28 F.B774P 31

Company	HOPE NATURAL GAS CO.
Address	CLARKSBURG, W.VA.
Farm	ADLAI DUFFIELD
Tract	Acres 106 Lease No. 7431
Well (Farm) No.	Serial No. 6724
Elevation (Spirit Level)	1142
Quadrangle	OTTER
County	CALHOUN District WASHINGTON
Engineer	W.M. Tower
Engineer's Registration No.	900
File No.	Drawing No.
Date	AUGUST 1, 1945 Scale 1" = 40 P.

STATE OF WEST VIRGINIA  
DEPARTMENT OF MINES  
OIL AND GAS DIVISION  
CHARLESTON

**WELL LOCATION MAP**  
FILE NO. CAL-196-A

+ Denotes location of well on United States Topographic Maps, scale 1 to 62,500, latitude and longitude lines being represented by border lines as shown.

- Denotes one inch spaces on border line of original tracing.



348

STATE OF WEST VIRGINIA  
DEPARTMENT OF MINES  
OIL AND GAS DIVISION

WELL RECORD

Permit No. 196-A

Oil or Gas Well (KIND)

Company Hope Natural Gas Company.  
Address 445 West Main St. Clarksburg, W. Va.  
Farm Adlai Duffield Acres 106  
Location (waters) \_\_\_\_\_  
Well No. 6724 Elev. 1142  
District Washington County Calhoun  
The surface of tract is owned in fee by \_\_\_\_\_  
Address \_\_\_\_\_  
Mineral rights are owned by \_\_\_\_\_  
Address \_\_\_\_\_  
Drilling commenced October 6, 1926.  
Drilling completed October 31, 1926  
Date Shot \_\_\_\_\_ From \_\_\_\_\_ To \_\_\_\_\_  
With \_\_\_\_\_

Casing and Tubing	Used in Drilling	Left in Well	Packers
Size			
16			Kind of Packer
13			
10	170	Pulled	Size of
8 1/4	1075	1075	
6 5/8	1848	Pulled	Depth set
5 3/16			
3			Perf. top
2	1700	Pulled	Perf. bottom
Liners Used			Perf. top
			Perf. bottom

Open Flow \_\_\_\_\_ /10ths Water in \_\_\_\_\_ Inch  
\_\_\_\_\_ /10ths Merc. in \_\_\_\_\_ Inch  
Volume \_\_\_\_\_ Cu. Ft.  
Rock Pressure \_\_\_\_\_ lbs. \_\_\_\_\_ hrs.  
Oil \_\_\_\_\_ bbls., 1st 24 hrs.  
Fresh water none recorded feet \_\_\_\_\_ feet  
Salt water none recorded feet \_\_\_\_\_ feet

CASING CEMENTED Not cemented SIZE \_\_\_\_\_ No. Ft. \_\_\_\_\_ Date \_\_\_\_\_  
COAL WAS ENCOUNTERED AT None recorded FEET \_\_\_\_\_ INCHES  
\_\_\_\_\_ FEET \_\_\_\_\_ INCHES FEET \_\_\_\_\_ INCHES  
\_\_\_\_\_ FEET \_\_\_\_\_ INCHES FEET \_\_\_\_\_ INCHES

Formation	Color	Hard or Soft	Top	Bottom	Oil, Gas or Water	Depth Found	Remarks
Little Dunkard			460	490			
Big Dunkard			575	700			
Gas sand			740	940			
First Salt			1025	1290			
Second Salt			1396	1445	gas	1407	
Sand			1460	1500			
Third Salt			1640	1670	gas	1660	
Maxon			1738	1770			
Little Lime			1775	1810			
Pencil cave			1810	1825			
Big Lime			1825	1911	show gas	1900	
Big Injun			1911	1992			
Lime shell				2300			
Total depth				2335			
Hole filled back to				1700			

