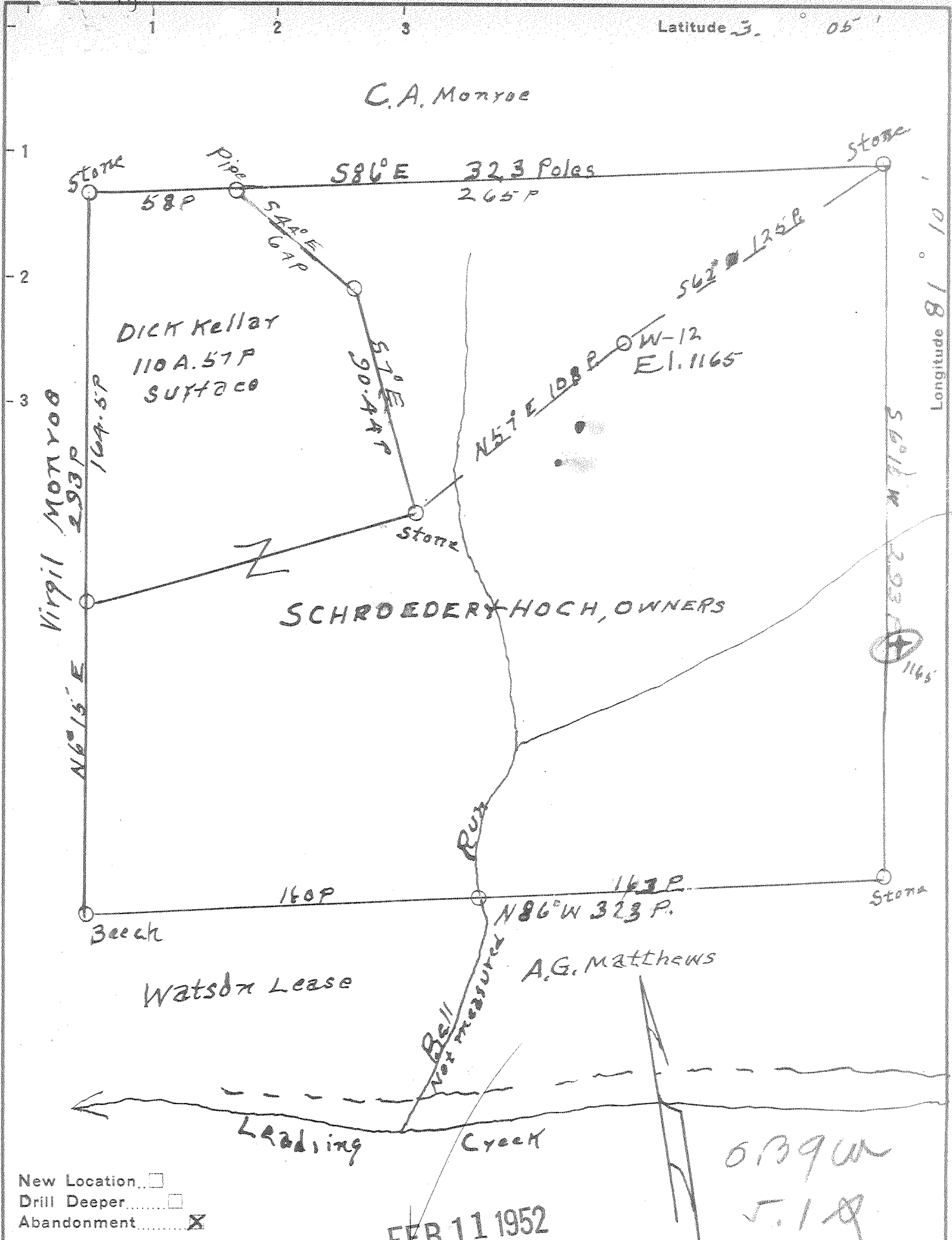


C.A. Monroe

Latitude 3. 05'



New Location...   
 Drill Deeper...   
 Abandonment...

FEB 11 1952

0390W  
5.18

Company Schroeder Bros. Oil & Gas Properties  
 Address Parkersburg, W.Va.  
 Farm Schroeder & Hoch  
 Tract \_\_\_\_\_ Acres 465 Lease No. \_\_\_\_\_  
 Well (Farm) No. 12 Serial No. \_\_\_\_\_  
 Elevation (Spirit Level) 1165'  
 Quadrangle HARRISVILLE (SW)  
 County CALHOUN District SHERIDAN  
 Engineer Robert R Anderson  
 Engineer's Registration No. 296  
 File No. \_\_\_\_\_ Drawing No. \_\_\_\_\_  
 Date 4-5-51 Scale 1 in = 50 Poles

STATE OF WEST VIRGINIA  
 DEPARTMENT OF MINES  
 OIL AND GAS DIVISION  
 CHARLESTON

WELL LOCATION MAP  
 FILE NO. CAL-283-A

+ Denotes location of well on United States Topographic Maps, scale 1 to 62,500, latitude and longitude lines being represented by border lines as shown.

- Denotes one inch spaces on border line of original tracing.

SCHROEDER & HOCH NO. 12 WELL.

Sheridan District, Calhoun County, W. Va.  
By Schroeder Bros. Oil & Gas Properties, St. Marys Ave. and 19th St.,  
Parkersburg, W. Va.  
Drilled under permit Cal-283-A; Harrisville Quadrangle.  
On 465 acres, on Bell Run.  
Surface and minerals owned by Schroeder & Hoch, Parkersburg, W. Va.  
Drilling commenced prior to 1929.  
6 $\frac{5}{8}$ " casing, 1650'.  
Oil well. Record to Dept. of Mines dated April 5, 1951.  
Record to RCT from Lineberg Feb. 11, 1952. Old File No. 443.

	Top.	Bottom.
Top of Salt Sand (first oil, 1826-1832';		
second oil, 1856-1871')	1787 - ....	
Total depth		1880