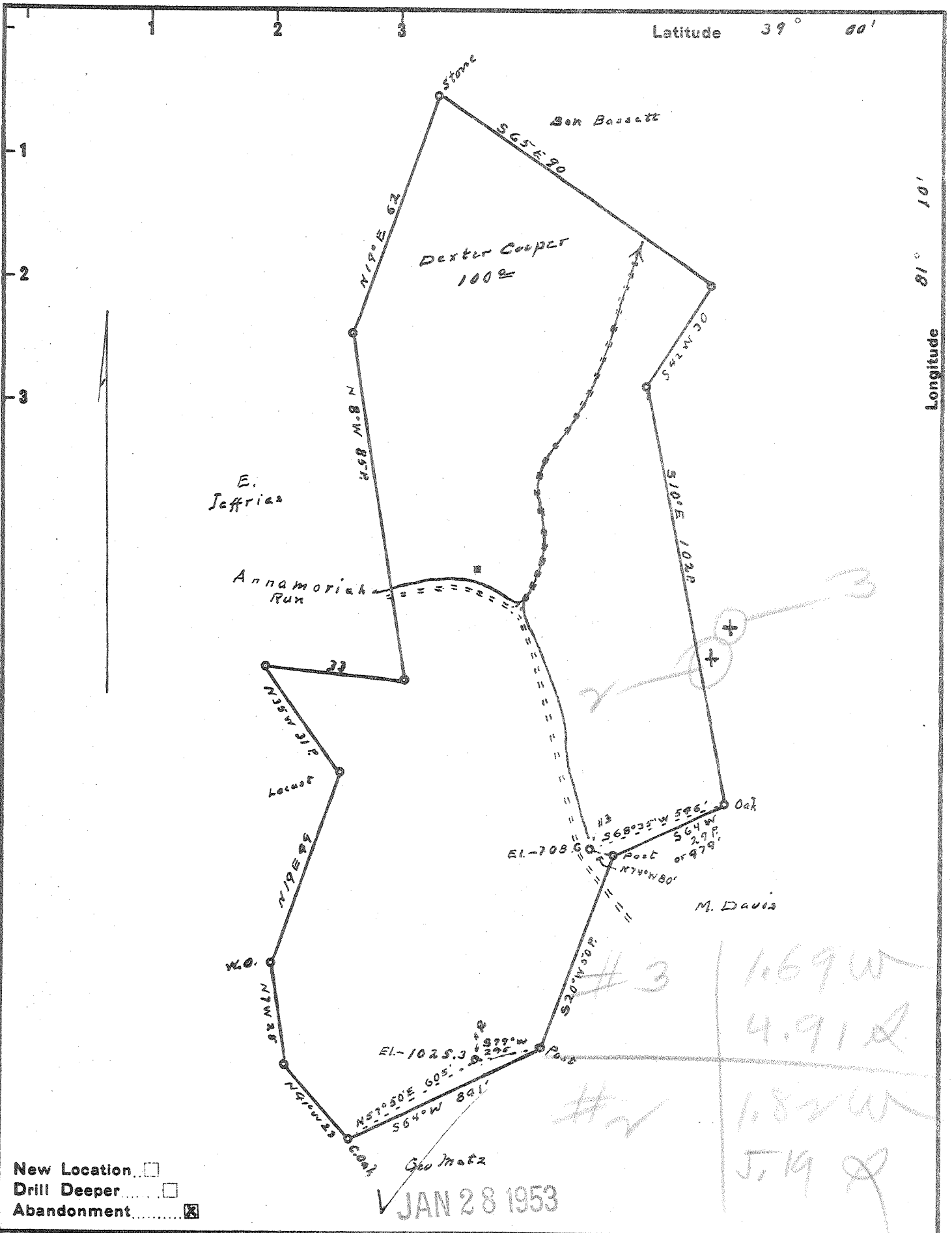


7M



New Location
 Drill Deeper
 Abandonment

JAN 28 1953

Company O.F. Kinney
 Address R2, Walker W.Va.
 Farm Dexter Cooper
 Tract _____ Acres 100 Lease No. _____
 Well (Farm) No. 3 and 2 Serial No. _____
 Elevation (Spirit Level) 1025.3 ; 708.6
 Quadrangle Arnoldsburg
 County Calhoun District Sheridan
 Engineer Robert R. Anderson
 by D. Meredith
 Engineer's Registration No. _____
296
 File No. _____ Drawing No. _____
 Date 12/30 52 Scale 1 in = 30 Poles

STATE OF WEST VIRGINIA
 DEPARTMENT OF MINES
 OIL AND GAS DIVISION
 CHARLESTON

WELL LOCATION MAP
 FILE NO. CAL-313-A-#3
CAL-314-A-#2

+ Denotes location of well on United States Topographic Maps, scale 1 to 62,500, latitude and longitude lines being represented by border lines as shown.

- Denotes one inch spaces on border line of original tracing.

K&E 158 IMPERIAL TRACING CLOTH T.M.

DEXTER COOPER MS, 38 & 2 - O.F. KINNEY - CAL-313-314-A