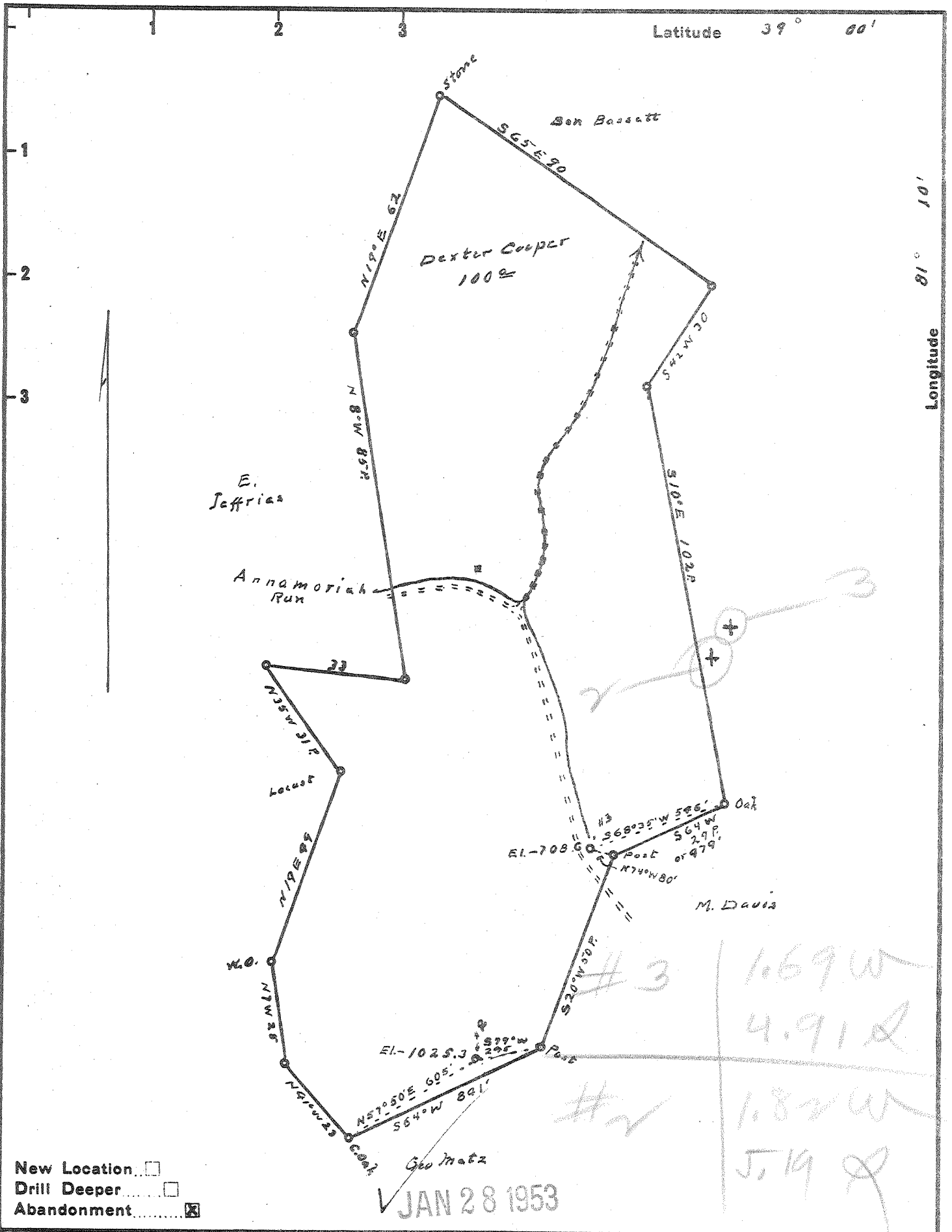


71



New Location   
 Drill Deeper   
 Abandonment

JAN 28 1953

Company O.F. Kinney  
 Address R2, Walker W.Va.  
 Farm Dexter Cooper  
 Tract \_\_\_\_\_ Acres 100 Lease No. \_\_\_\_\_  
 Well (Farm) No. 3 and 2 Serial No. \_\_\_\_\_  
 Elevation (Spirit Level) 8-1025.3 ; 4-708.6  
 Quadrangle Arnoldsburg  
 County Calhoun District Sheridan  
 Engineer Robert R. Anderson  
 by D. Meredith  
 Engineer's Registration No. \_\_\_\_\_  
296  
 File No. \_\_\_\_\_ Drawing No. \_\_\_\_\_  
 Date 12/30 52 Scale 1 in = 30 Poles

STATE OF WEST VIRGINIA  
 DEPARTMENT OF MINES  
 OIL AND GAS DIVISION  
 CHARLESTON

WELL LOCATION MAP  
 FILE NO. CAL-313-A-#3  
CAL-314-A-#2

+ Denotes location of well on United States Topographic Maps, scale 1 to 62,500, latitude and longitude lines being represented by border lines as shown.

- Denotes one inch spaces on border line of original tracing.