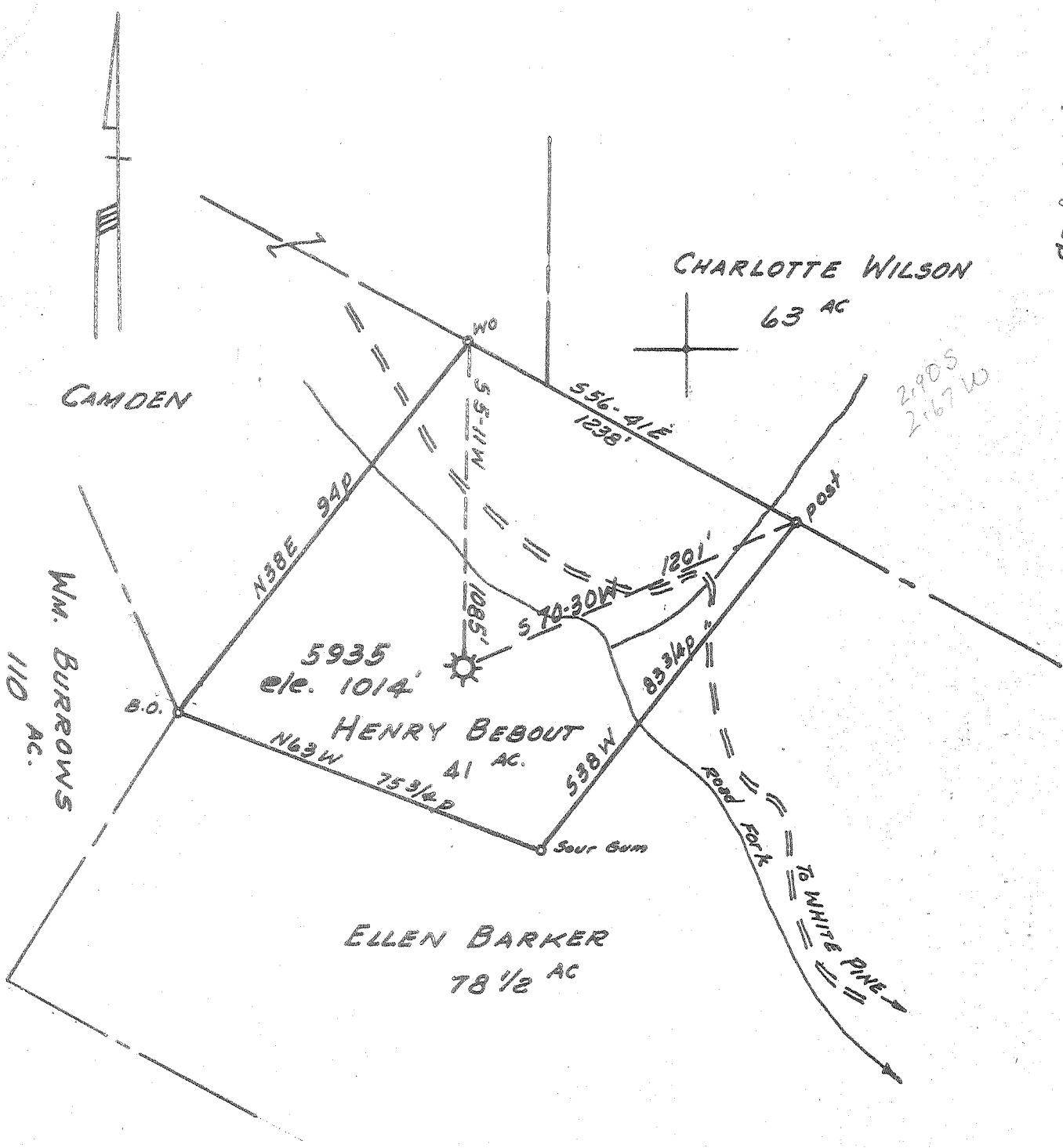


Latitude 39° 00'

Longitude 81° 00'



New Location   
 Drill Deeper   
 Abandonment

M. SH. 88, S33W25 F.B. 1135 p.1.

Company HOPE NATURAL GAS CO.  
 Address CLARKSBURG, W. VA.  
 Farm HENRY BEBOUT  
 Tract \_\_\_\_\_ Acres 41 Lease No. 23672  
 Well (Farm) No. \_\_\_\_\_ Serial No. 5935  
 Elevation (Spirit Level) 1014'  
 Quadrangle ARNOLDSBURG  
 County CALHOUN District SHERMAN  
 Engineer Guy H. Bradley  
 Engineer's Registration No. 2425  
 File No. \_\_\_\_\_ Drawing No. \_\_\_\_\_  
 Date MAY 28, 1956 Scale 1" = 30p.

STATE OF WEST VIRGINIA  
 DEPARTMENT OF MINES  
 OIL AND GAS DIVISION  
 CHARLESTON

WELL LOCATION MAP  
 FILE NO. CAL-336-A

+ Denotes location of well on United States Topographic Maps, scale 1 to 62,500, latitude and longitude lines being represented by border lines as shown.  
 - Denotes one inch spaces on border line of original tracing.



STATE OF WEST VIRGINIA  
DEPARTMENT OF MINES  
OIL AND GAS DIVISION

494

Quadrangle Arnoldsburg

WELL RECORD

Permit No. 336-A

Oil or Gas Well Gas  
(KIND)

Company Hope Natural Gas Company  
Address Clarksburg, W. Va.  
Farm Henry Bebout Acres 41  
Location (waters) \_\_\_\_\_  
Well No. 5935 Elev. 1014'  
District Sherman County Calhoun  
The surface of tract is owned in fee by \_\_\_\_\_  
Address \_\_\_\_\_  
Mineral rights are owned by \_\_\_\_\_  
Address \_\_\_\_\_

Drilling commenced February 24, 1921  
Drilling completed April 2, 1921  
Date Shot 4-9-21 From 1968 To 1978  
With 15 qts.

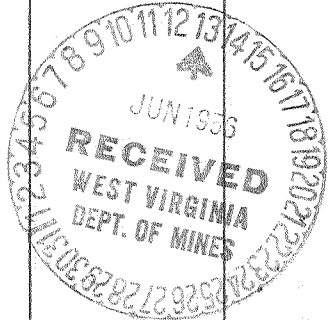
Open Flow \_\_\_\_\_ /10ths Water in \_\_\_\_\_ Inch  
\_\_\_\_\_ /10ths Merc. in \_\_\_\_\_ Inch  
Volume Exhausted Cu. Ft.  
Rock Pressure \_\_\_\_\_ lbs. \_\_\_\_\_ hrs.  
Oil none bbls., 1st 24 hrs.  
Fresh water none recorded feet \_\_\_\_\_ feet  
Salt water none recorded feet \_\_\_\_\_ feet

Casing and Tubing	Used in Drilling	Left in Well	Packers
Size			Kind of Packer
16			
13			
10			Size of
8 1/4	975'	975'	
6 5/8	1873'	1873'	Depth set
5 3/16			
3			Perf. top
2			Perf. bottom
Liners Used			Perf. top
			Perf. bottom

not cemented  
CASING CEMENTED \_\_\_\_\_ SIZE \_\_\_\_\_ No. Ft. \_\_\_\_\_ Date \_\_\_\_\_

COAL WAS ENCOUNTERED AT no coal FEET \_\_\_\_\_ INCHES  
FEET \_\_\_\_\_ INCHES FEET \_\_\_\_\_ INCHES  
FEET \_\_\_\_\_ INCHES FEET \_\_\_\_\_ INCHES

Formation	Color	Hard or Soft	Top	Bottom	Oil, Gas or Water	Depth Found	Remarks
L. Dunkard			700	740			
Big Dunkard			925	990			
Gas Sand		Soft	1080	1100	gas	1090	
First Salt			1160	1350			
Second Salt			1400	1450			
Third Salt		Soft	1545	1620	gas	1585	
Maxon			1740	1790	gas	1752	
Little Lime			1845	1863			
Pencil Cave			1863	1873			
Big Lime			1873	1947			
Big Injun			1947	1991	gas	1968	
Total Depth				2095			



June 12, 1956  
Hope Natural Gas Co.  
B. R. NUZUM  
General Superintendent  
By [Signature]