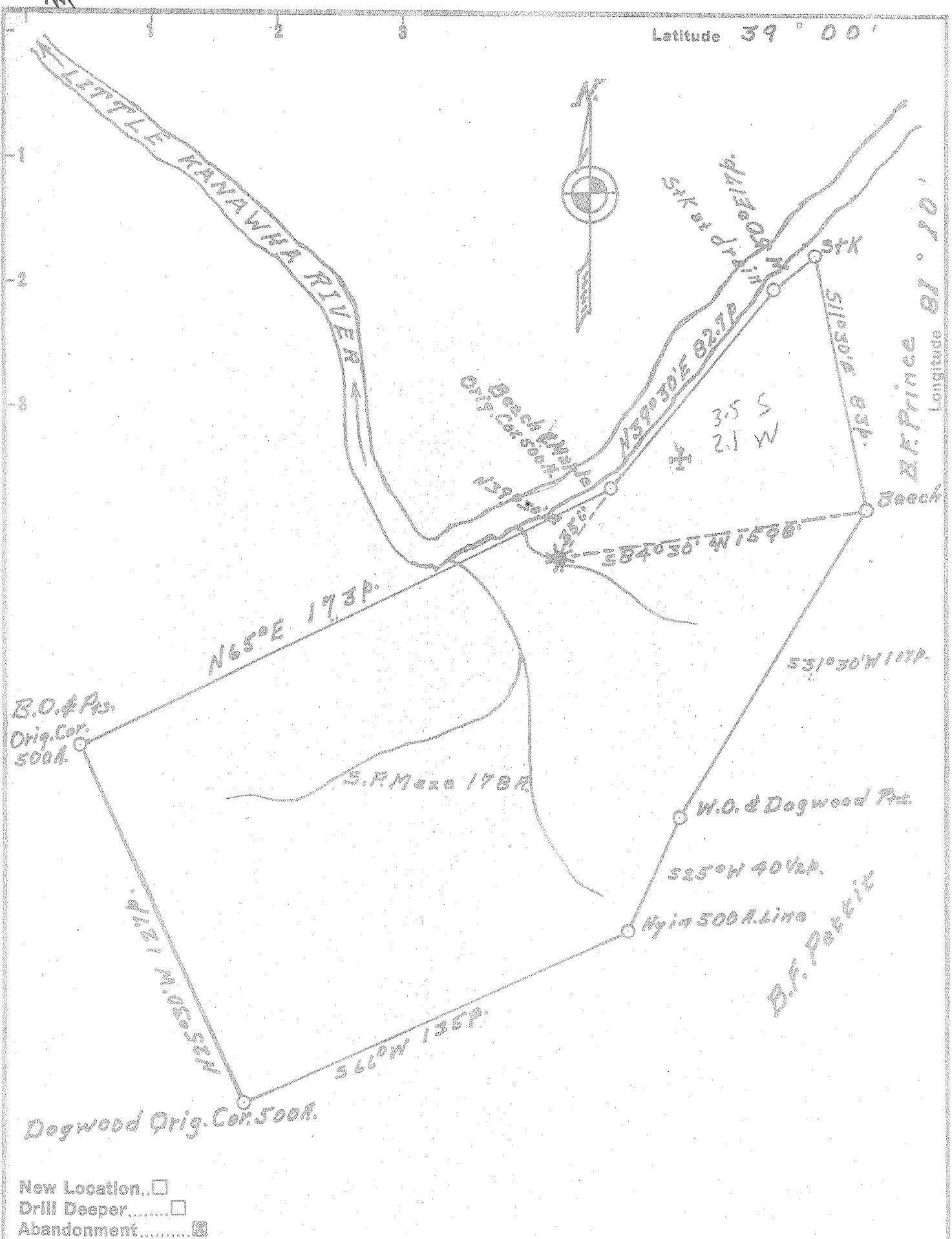


Latitude 39° 00'



New Location...
 Drill Deeper.....
 Abandonment.....

Company Marshall & Huston
 Address Annamorriah, W. Va
 Farm S.P. Maze
 Tract _____ Acres 178 Lease No. _____
 Well (Farm) No. 2 Serial No. _____
 Elevation (Spirit Level) 675'
 Quadrangle Arnoldsburg
 County Calhoun District Sheridan
 SURVEYED BY: BRUCE FERRELL
 Engineer Donald W. Morris
 Engineer's Registration No. 1653
 File No. _____ Drawing No. _____
 Date 10/9/56 Scale 40P = 1 in.

STATE OF WEST VIRGINIA
 DEPARTMENT OF MINES
 OIL AND GAS DIVISION
 CHARLESTON

WELL LOCATION MAP
 FILE NO. CAL-332-A

+ Denotes location of well on United States Topographic Maps, scale 1 to 62,500, latitude and longitude lines being represented by border lines as shown.
 - Denotes one inch spaces on border line of original tracing.