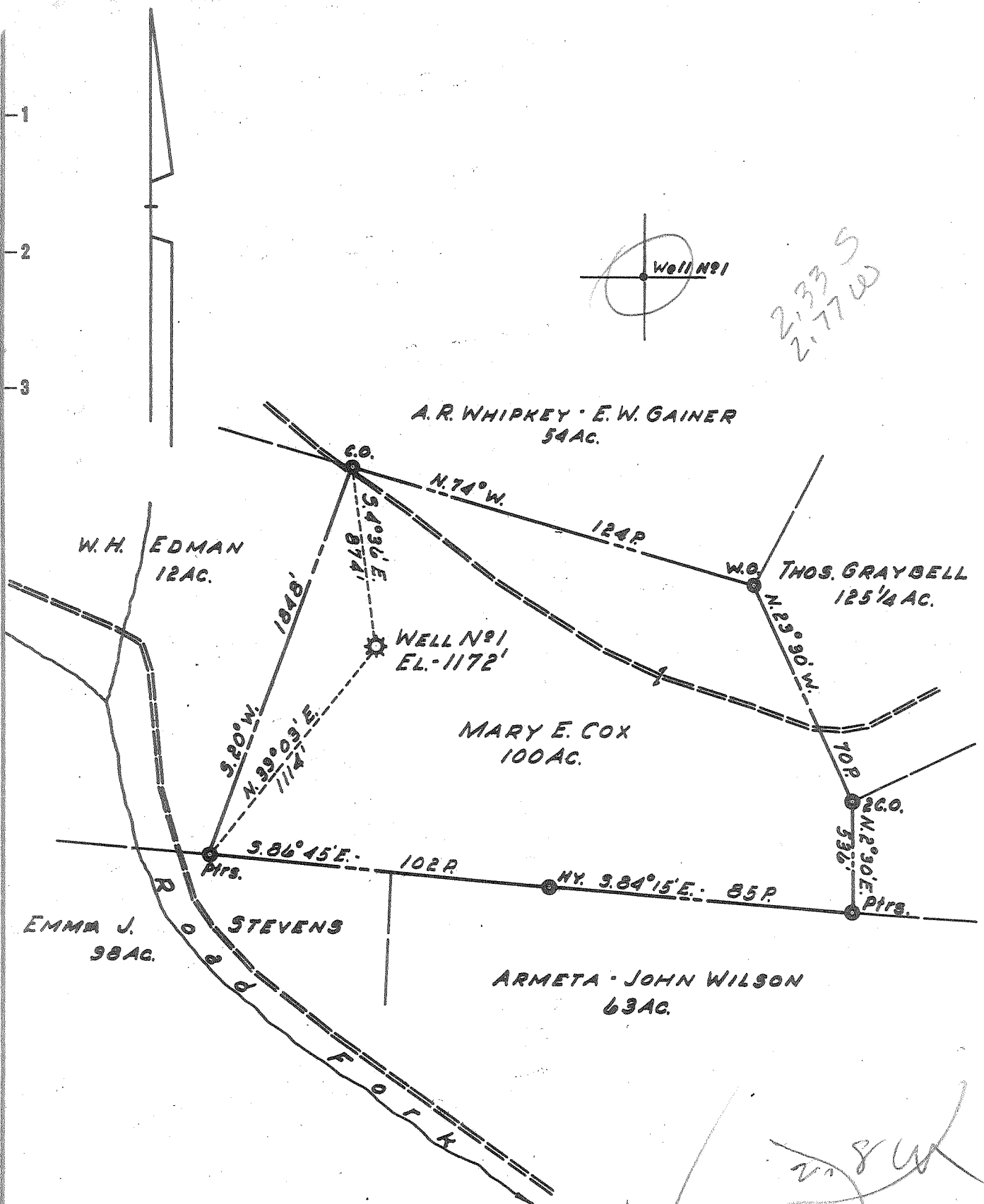


Latitude 39° 00'

Longitude 81° 00'



New Location   
 Drill Deeper   
 Abandonment

MAY 18 1959

Formerly Hope Natural Gas Co. Well No 2264

Company LURAY LAND, INC.  
 Address POINT PLEASANT, W. VA.  
 Farm MARY E. COX  
 Tract \_\_\_\_\_ Acres 100 Lease No. \_\_\_\_\_  
 Well (Farm) No. 1 Serial No. \_\_\_\_\_  
 Elevation (Spirit Level) 1172'  
 Quadrangle ARNOLDSBURG  
 County CALHOUN District SHERMAN  
 Engineer H. P. SUTER  
 Engineer's Registration No. 1805  
 File No. \_\_\_\_\_ Drawing No. \_\_\_\_\_  
 Date 21 MAR. 1959 Scale 1" = 40 FEET

STATE OF WEST VIRGINIA  
 DEPARTMENT OF MINES  
 OIL AND GAS DIVISION  
 CHARLESTON

### WELL LOCATION MAP

FILE NO. CAL-358-A

+ Denotes location of well on United States Topographic Maps, scale 1 to 62,500, latitude and longitude lines being represented by border lines as shown.

- Denotes one inch spaces on border line of original tracing.

MARY E. COX NO. 1 (2174) LURAY LAND, INC. — CAL-358-A



*502*

STATE OF WEST VIRGINIA  
DEPARTMENT OF MINES  
OIL AND GAS DIVISION

Quadrangle Annalsburg

Permit No. Cal-358-A

WELL RECORD

Oil or Gas Well Gas  
(KIND)

Company Lurray Land Co.  
Address Room 10 - Capital City Bldg. Charleston W. Va.  
Farm Mary E. Cox Acres 105  
Location (waters) \_\_\_\_\_  
Well No. 2264 Elev. 1172  
District Sherman County Calhoun  
The surface of tract is owned in fee by \_\_\_\_\_  
Address \_\_\_\_\_  
Mineral rights are owned by \_\_\_\_\_  
Address \_\_\_\_\_  
Drilling commenced June 30, 1911  
Drilling completed Oct. 4, 1911  
Date Shot 5-23-16 From \_\_\_\_\_ To \_\_\_\_\_  
With Open 7-7-48 30 qts  
Open Flow \_\_\_\_\_ /10ths Water in \_\_\_\_\_ Inch  
\_\_\_\_\_ /10ths Merc. in \_\_\_\_\_ Inch  
Volume 725,720 19,869 Cu. Ft.  
Rock Pressure \_\_\_\_\_ lbs. \_\_\_\_\_ hrs.  
Oil \_\_\_\_\_ bbls., 1st 24 hrs.  
WELL ACIDIZED \_\_\_\_\_  
WELL FRACTURED \_\_\_\_\_

Casing and Tubing	Used in Drilling	Left in Well	Packers
Size			
16			Kind of Packer
13			
10	<u>40' 8"</u>	<u>40' 8"</u>	Size of
8 1/4	<u>1193' 5"</u>	<u>1193' 5"</u>	<u>6 3/8" x 2"</u>
6 5/8	<u>2054' 2"</u>	<u>2054' 2"</u>	Depth set
5 3/16			<u>2055' 8"</u>
3 7/8	<u>2144'</u>	<u>2144'</u>	Perf. top
2	<del>2144'</del>		Perf. bottom
Liners Used	<u>after first</u>		Perf. top
			Perf. bottom

CASING CEMENTED \_\_\_\_\_ SIZE \_\_\_\_\_ No. Ft. \_\_\_\_\_ Date \_\_\_\_\_

COAL WAS ENCOUNTERED AT \_\_\_\_\_ FEET \_\_\_\_\_ INCHES  
\_\_\_\_\_ FEET \_\_\_\_\_ INCHES \_\_\_\_\_ FEET \_\_\_\_\_ INCHES  
\_\_\_\_\_ FEET \_\_\_\_\_ INCHES \_\_\_\_\_ FEET \_\_\_\_\_ INCHES

RESULT AFTER TREATMENT \_\_\_\_\_  
ROCK PRESSURE AFTER TREATMENT \_\_\_\_\_  
Fresh Water \_\_\_\_\_ Feet Salt Water \_\_\_\_\_ Feet

Formation	Color	Hard or Soft	Top	Bottom	Oil, Gas or Water	Depth	Remarks
Bunkard Sand			1125	1270			
Salt Sand			1630	1754	gas	1750	
Maxon Sand			1858	1908	gas	1867-90	
Injun Sand			2052	2112	gas	2093	
Shells			2428	2429	oil	2429	
Total depth				2537			
Filled	<u>10-7-11</u> <u>7-29-48</u>			2162			
				2144			
							<u>2054</u> <u>1830</u> <u>724</u>
							<u>1193</u> <u>600</u> <u>593</u>

JUL 23 1959

