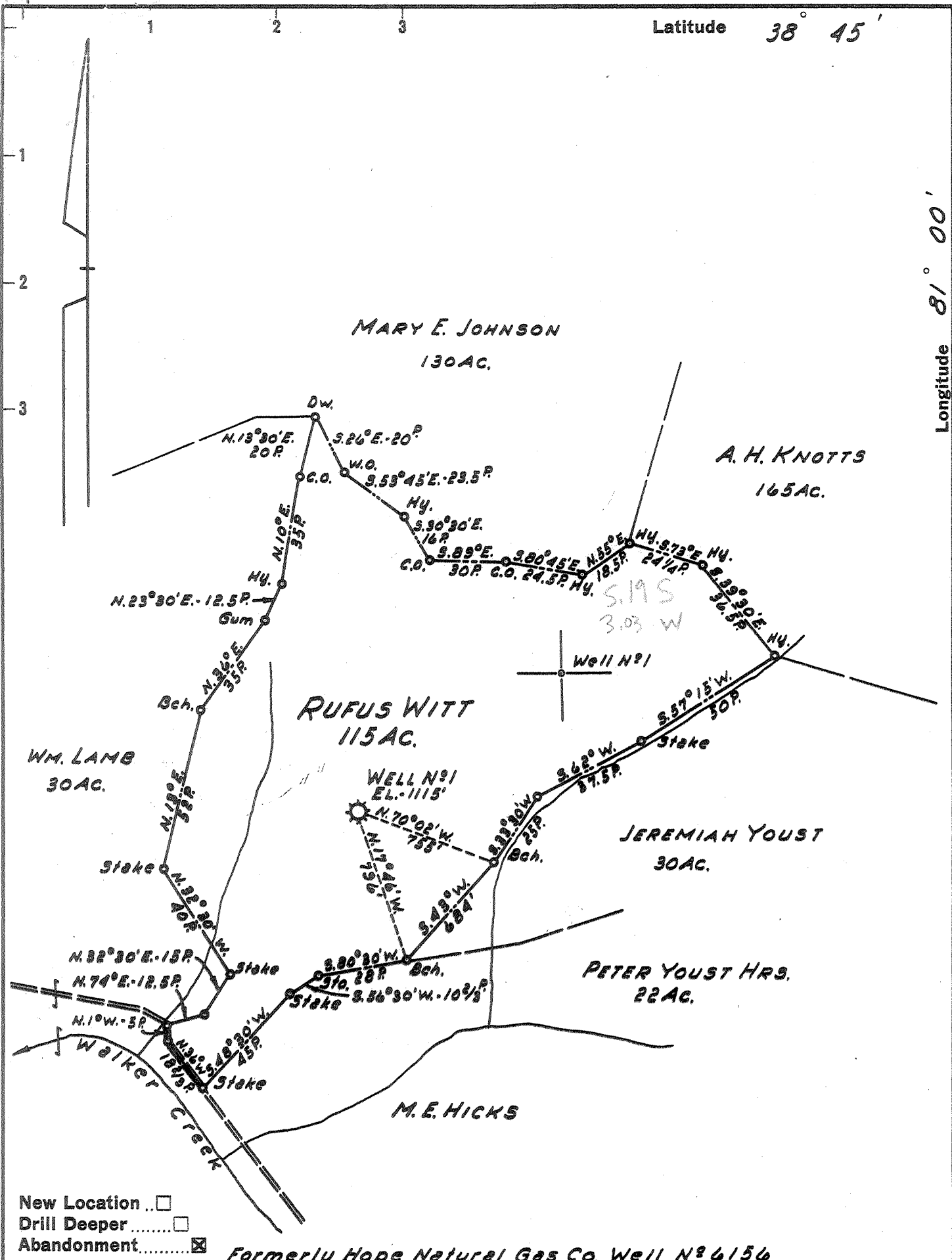


Latitude 38° 45'

Longitude 81° 00'



Company LURAY LAND, INC.  
 Address POINT PLEASANT, W.VA.  
 Farm RUFUS WITT  
 Tract \_\_\_\_\_ Acres 115 Lease No. \_\_\_\_\_  
 Well (Farm) No. 1 Serial No. \_\_\_\_\_  
 Elevation (Spirit Level) 1115'  
 Quadrangle OTTER  
 County CALHOUN District WASHINGTON  
 Engineer H. P. SUTER  
 Engineer's Registration No. 1805  
 File No. \_\_\_\_\_ Drawing No. \_\_\_\_\_  
 Date 30 MAR. 1959 Scale 1" = 40 POLES

STATE OF WEST VIRGINIA  
DEPARTMENT OF MINES  
OIL AND GAS DIVISION  
CHARLESTON

**WELL LOCATION MAP**  
FILE NO. CAL-360-A

+ Denotes location of well on United States Topographic Maps, scale 1 to 62,500, latitude and longitude lines being represented by border lines as shown.  
 - Denotes one inch spaces on border line of original tracing.

RUFUS WITT NO. 1 (6156) WELL.

Washington District, Calhoun County, W. Va.

By Hope Natural Gas Co., Clarksburg, W. Va. Abandoned by LuRay Land, Inc.

Abandoned under permit Cal-360-A; Otter Quadrangle.

On 115 acres.

Elevation, 1115' L.

Drilling commenced Sept. 25, 1922; completed Nov. 15, 1922.

8½" casing, 345' 10"; 6⅝", 1048' 5"; 3", 437' (pulled); 2" tubing,  
1024' (pulled).

Gas well. Record to Dept. of Mines dated March 5, 1959.

Record from <sup>Mrs. Griffith</sup> ~~Mr. Griffith~~ Nov. 5, 1959, to RGT. Old File No. 512.

	Top.	Bottom.
Little Dunkard Sand	710	- 735
Big Dunkard Sand	745	- 980
Sand	1274	- 1305 ?
2nd sand	1215	- 1355 ?
(Gas at 1360')		
3 Sand	1413	
CORRECTED:		
1st Salt Sand (gas, 1435-43 and 1444-62')	1315	- 1462
2nd Salt Sand (gas show, 1491')	1489	- 1494
3rd Salt Sand	1550	- ....
Total depth		1443' 8"
Deepened to		1553



