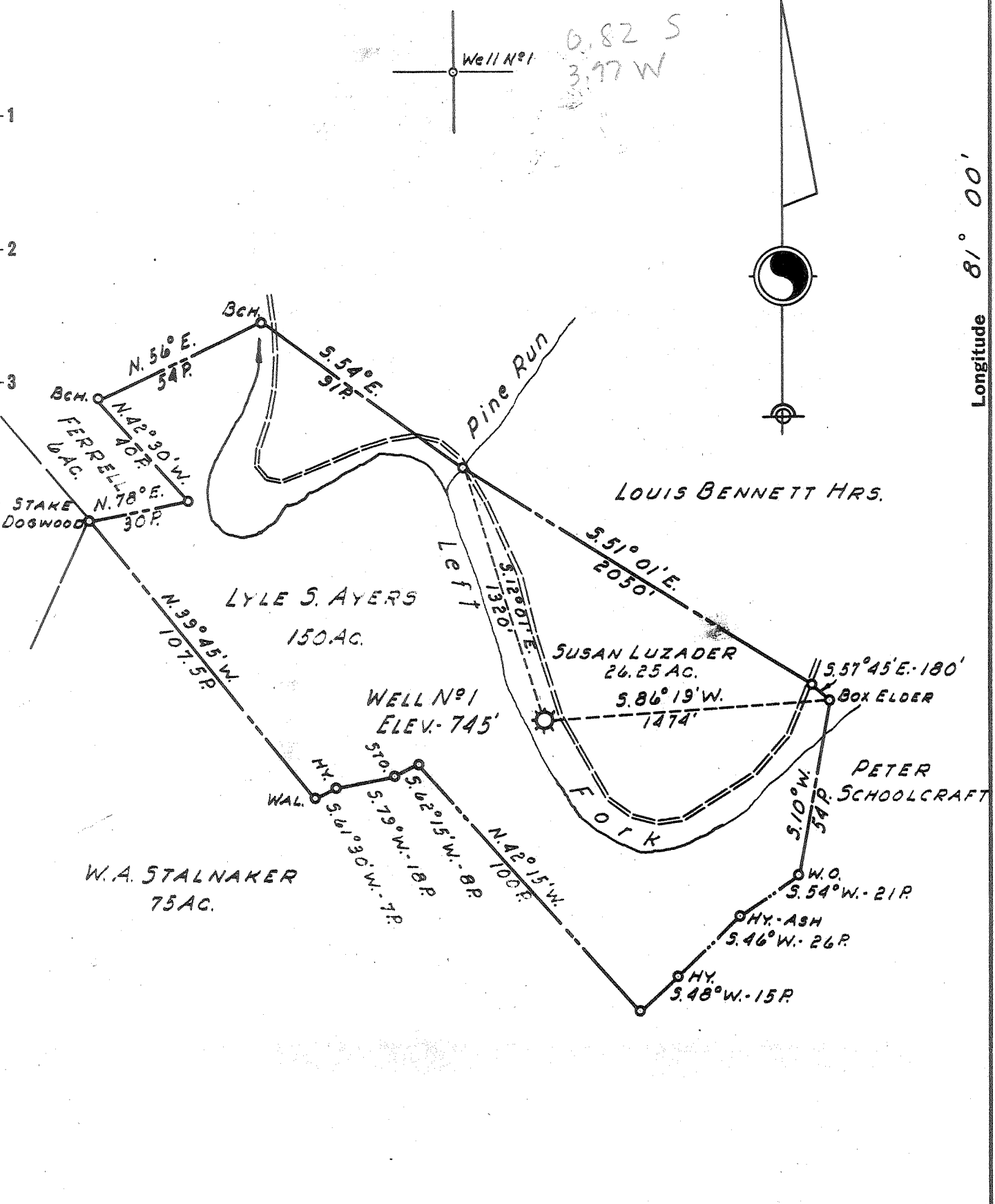


Latitude 38° 45'

Longitude 81° 00'



- New Location ..
- Drill Deeper ..
- Abandonment ..

Formerly Hope Natural Gas Co. Well N° 9733

Company LURAY LAND, INC.  
 Address POINT PLEASANT, WEST VA.  
 Farm LYLE S. AYERS  
 Tract \_\_\_\_\_ Acres 150 Lease No. \_\_\_\_\_  
 Well (Farm) No. 1 Serial No. \_\_\_\_\_  
 Elevation (Spirit Level) 745'  
 Quadrangle OTTER  
 County CALHOUN District WASHINGTON  
 Engineer H. P. SUTER  
 Engineer's Registration No. 1805  
 Drawing No. \_\_\_\_\_  
 Date 10 MAR. 1959 Scale 1" = 40 POLES

STATE OF WEST VIRGINIA  
DEPARTMENT OF MINES  
OIL AND GAS DIVISION  
CHARLESTON

**WELL LOCATION MAP**  
FILE NO. CAL-361-A

+ Denotes location of well on United States Topographic Maps, scale 1 to 62,500, latitude and longitude lines being represented by border lines as shown.

- Denotes one inch spaces on border line of original tracing.