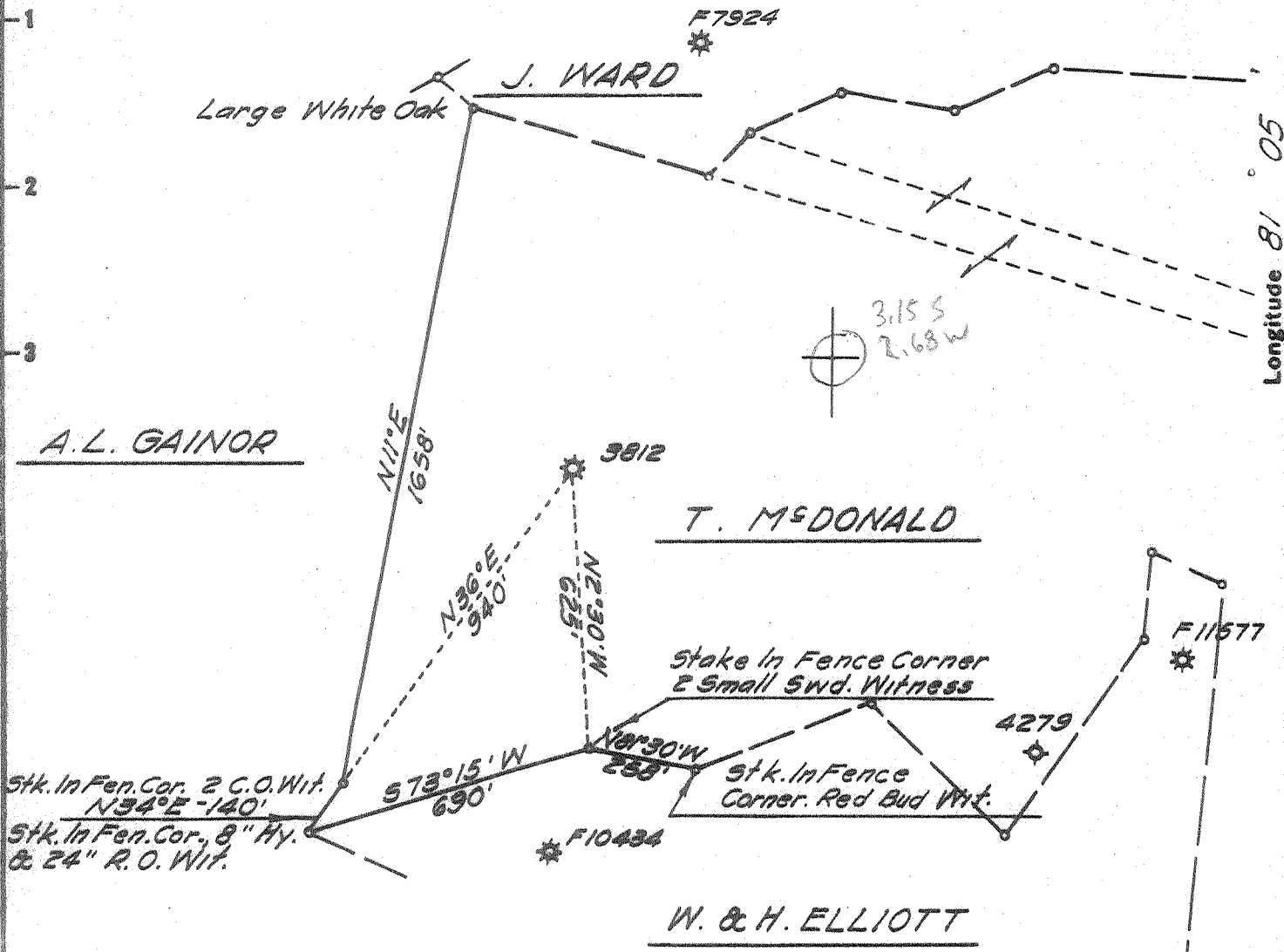


Latitude 38° 55'

Longitude 81° 05'



BENCH MARK DESCRIPTION

U.S.G.S. Alum. Disc. Marked U.S. Dept. of Int.  
 T. J. E. A. 1964 Set in The NW Headwall Of Bridge Over  
 Left Fork Of Pine Run, On West Side Of Creek, North  
 Side Of W. Va. Sec. Rt. 35 1/2, 200± West Of Jct. Of Rt.  
 16 1/4 & 35 1/2. Elev. 801.00'

DEGREE OF ACCURACY

One Part in 200

- Fracture Before 6/5/27
- New Location
- Drill Deeper
- Redrill
- Abandonment

I, the undersigned, hereby certify that this map is correct to the best of my knowledge and belief and shows all the information required by Paragraph 5 of the Rules and Regulations of the Oil and Gas Section of the Mining Laws of West Virginia.

The accuracy of this survey is within the limits and as prescribed in paragraph 5 by the Oil and Gas Division of the Department of Mines Regulations.

PROVEN ELEVATION 801.00'

Company UNITED FUEL GAS CO.

Address CHARLESTON, W. VA.

Farm T. McDONALD

Tract \_\_\_\_\_ Acres 76 Lease No. 27162

Well (Farm) No. 1 Serial No. 3812

Elevation (Spirit Level) 1144.30'

Quadrangle ARNOLDSBURG

County CALHOUN District CENTER

Engineer D. L. Jorins

Engineer's Registration No. 2712

File No. 88-95 Drawing No. \_\_\_\_\_

Date AUG. 22, '67 Scale 1" = 400'

STATE OF WEST VIRGINIA  
 DEPARTMENT OF MINES  
 OIL AND GAS DIVISION  
 CHARLESTON

WELL LOCATION MAP  
 FILE NO. CAL-393-A

+ Denotes location of well on United States Topographic Maps, scale 1 to 62,500 latitude and longitude lines being represented by border lines as shown.

- Denotes one inch spaces on border line of original tracing.