



West Virginia Department of Environmental Protection
Office of Oil and Gas
WELL LOCATION FORM: GPS

API: 47 - 015 - 00341 WELL NO.: OTTO # 6

FARM NAME: BOTO OTTO

RESPONSIBLE PARTY NAME: DEP PAID PLUGGING CONTRACT

COUNTY: CLAY - 015 DISTRICT: UNION

QUADRANGLE: ELKHURST

SURFACE OWNER: GARY KING

ROYALTY OWNER: N/A

UTM GPS NORTHING: 4257210.2

UTM GPS EASTING: 484364.7 GPS ELEVATION: 679'

The Responsible Party named above has chosen to submit GPS coordinates in lieu of preparing a new well location plat for a plugging permit or assigned API number on the above well. The Office of Oil and Gas will not accept GPS coordinates that do not meet the following requirements:

- Datum: NAD 1983, Zone: 17 North, Coordinate Units: meters, Altitude: height above mean sea level (MSL) – meters.
- Accuracy to Datum – 3.05 meters
- Data Collection Method:

Survey grade GPS : Post Processed Differential

Real-Time Differential

Mapping Grade GPS : Post Processed Differential

Real-Time Differential

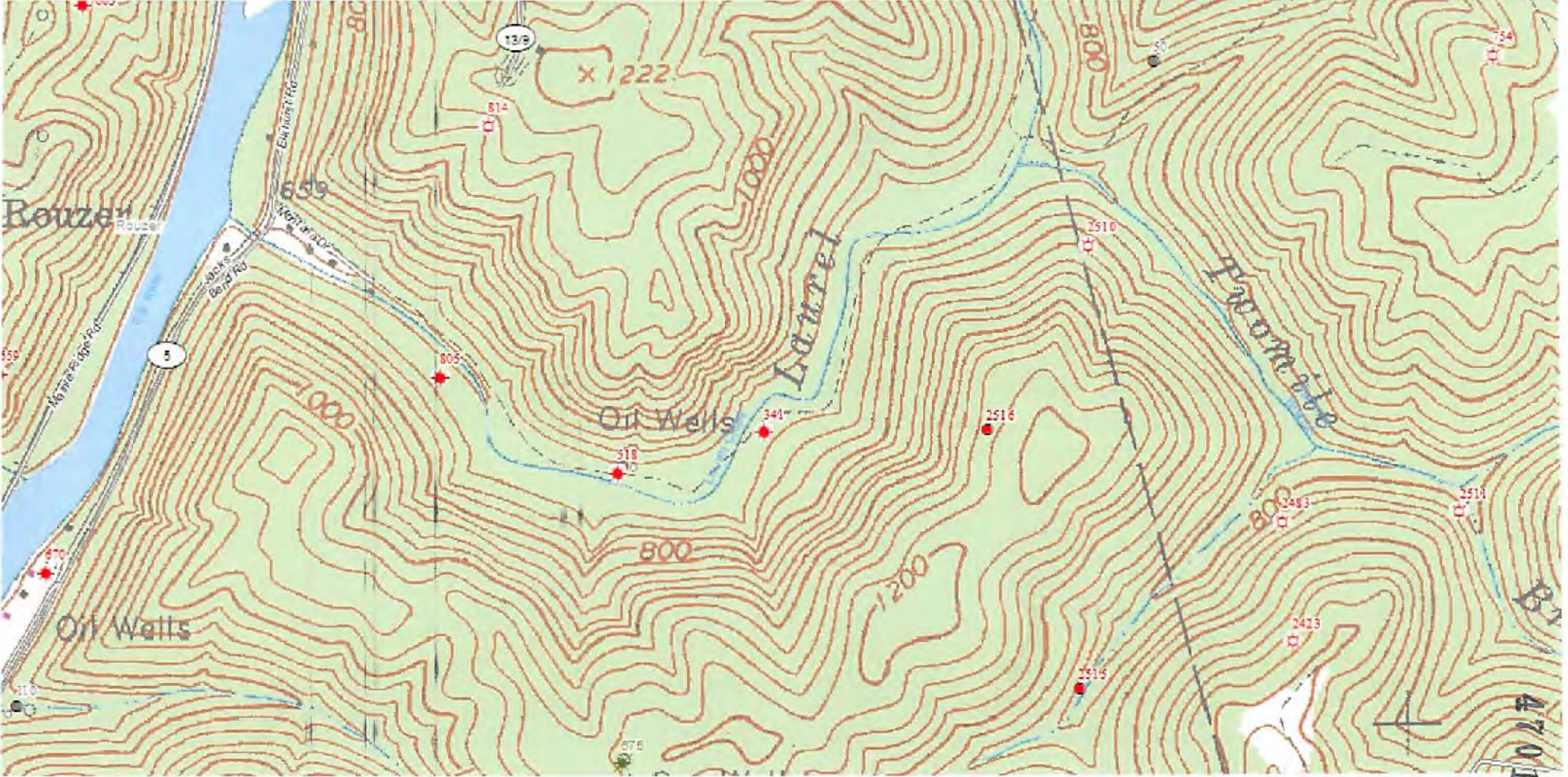
RECEIVED
Office of Oil and Gas
FEB 18 2022
WV Department of
Environmental Protection

- Letter size copy of the topography map showing the well location.**

I the undersigned, hereby certify this data is correct to the best of my knowledge and belief and shows all the information required by law and the regulations issued and prescribed by the Office of Oil and Gas.

ALLEN D FLOWERS Inspector specialist 2/15/2022

Signature Title Date



4701500341P

RECEIVED
Office of Oil and Gas
FEB 18 2022
WV Department of
Environmental Protection