

WW-7
8-30-06

RECEIVED
Office of Oil & Gas

NOV 21 2011



WV Department of
Environmental Protection

West Virginia Department of Environmental Protection
Office of Oil and Gas
WELL LOCATION FORM: GPS

API: 47-015-0468 ^f WELL NO.: Elk River Coal & Lumber 8081

FARM NAME: Elk River Coal & Lumber

RESPONSIBLE PARTY NAME: Range Resources-Pine Mountain, Inc.

COUNTY: Clay DISTRICT: Henry

QUADRANGLE: Swandale 7.5'

SURFACE OWNER: Allegheny Rural NMTC Forestlands, LLC

ROYALTY OWNER: Range Resources-Pine Mountain, Inc.

UTM GPS NORTHING: 4,251,531

UTM GPS EASTING: 503,370 GPS ELEVATION: 488 m (1601 ft)

The Responsible Party named above has chosen to submit GPS coordinates in lieu of preparing a new well location plat for a plugging permit or assigned API number on the above well. The Office of Oil and Gas will not accept GPS coordinates that do not meet the following requirements:

1. Datum: NAD 1983, Zone: 17 North, Coordinate Units: meters, Altitude: height above mean sea level (MSL) – meters.
2. Accuracy to Datum – 3.05 meters
3. Data Collection Method:
Survey grade GPS : Post Processed Differential
Real-Time Differential
Mapping Grade GPS : Post Processed Differential
Real-Time Differential
4. Letter size copy of the topography map showing the well location.

I the undersigned, hereby certify this data is correct to the best of my knowledge and belief and shows all the information required by law and the regulations issued and prescribed by the Office of Oil and Gas.

Brian R. Simpkins
Signature

P.S. 2092
Title

8-16-2011
Date

Topo Quad: Swandale 7.5'

Scale: 1" = 2000'

County: Clay

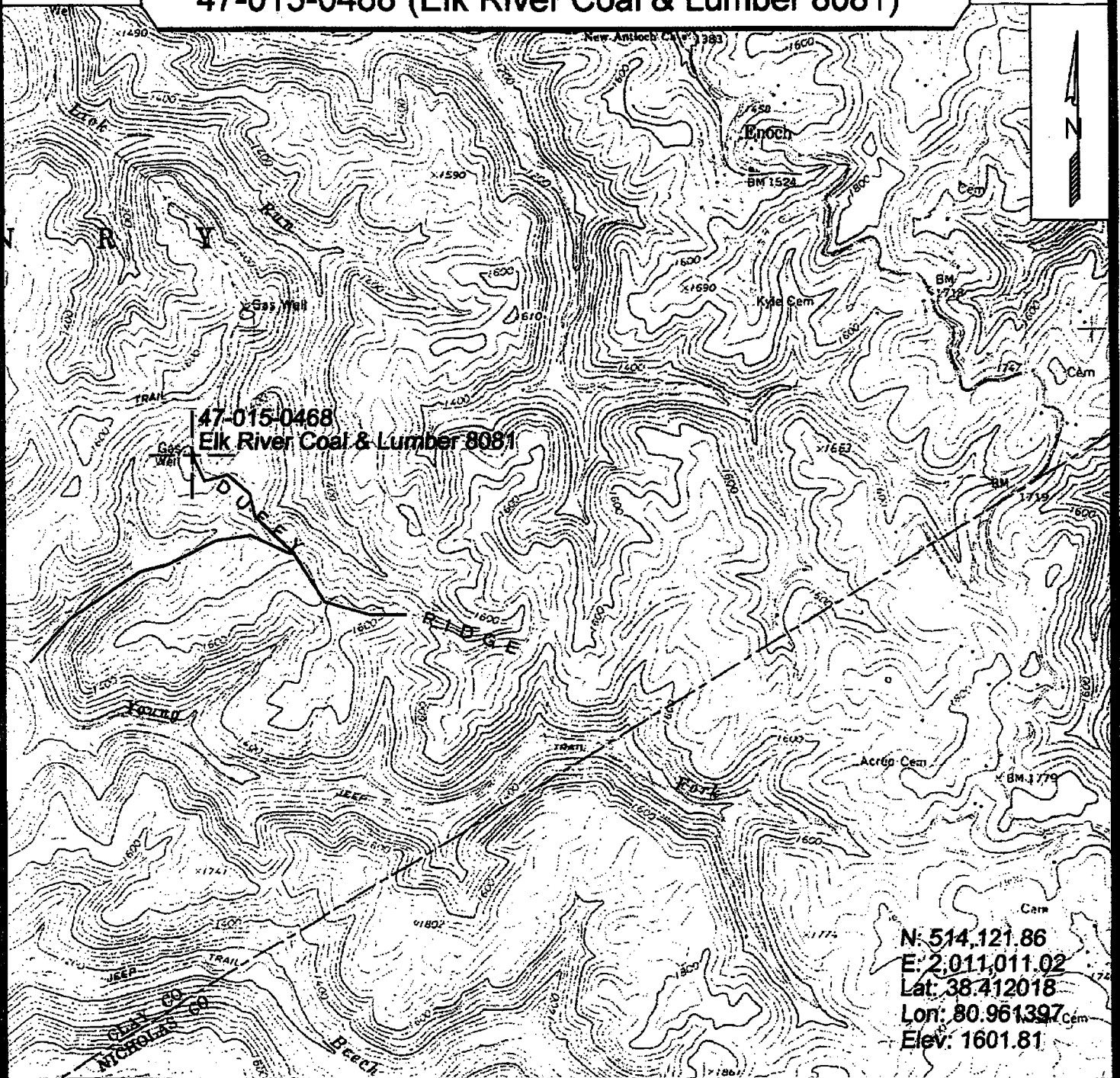
Date: May 3, 2011

District: Henry

Project No: 137-04-B-11

47-015-0468 (Elk River Coal & Lumber 8081)

Topo



N: 514,121.86
 E: 2,011,011.02
 Lat: 38.412018
 Lon: 80.961397
 Elev: 1601.81



SURVEYING AND MAPPING SERVICES PERFORMED BY:
ALLEGHENY SURVEYS, INC.
 1-800-482-8606
 P.O. BOX 438
 BIRCH RIVER, WV 26610
 PH: (304) 649-8606
 FAX: (304) 649-8608

PREPARED FOR:
Range Resources-Pine Mountain, Inc.
 P.O. Box 2136
 Abingdon, VA 24212