

Topo Quad: Swandale 7.5'

Scale: 1" = 2000'

County: Clay

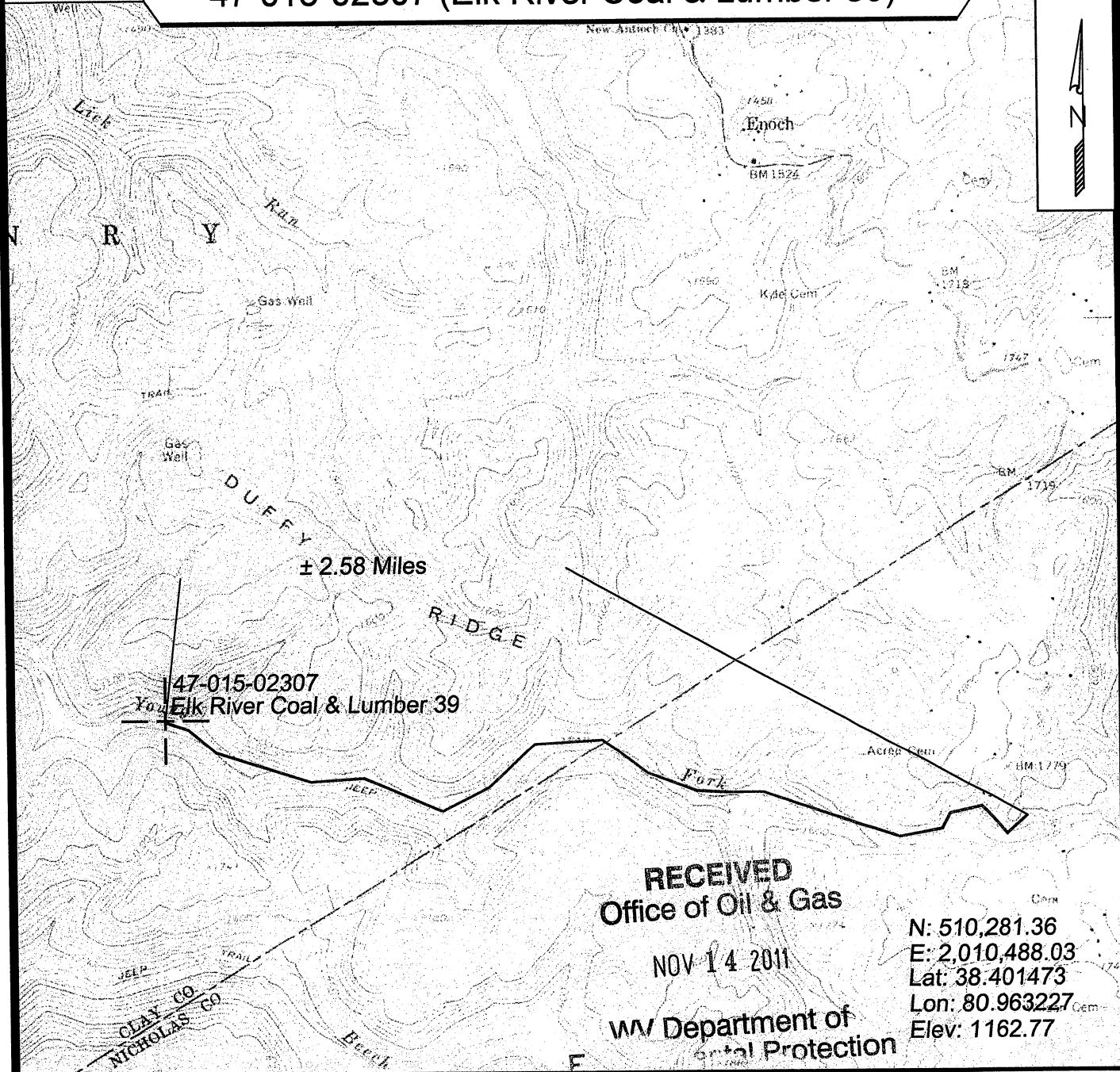
Date: June 30, 2011

District: Henry

Project No: 137-04-B-11

47-015-02307 (Elk River Coal & Lumber 39)

Topo



RECEIVED
Office of Oil & Gas

NOV 14 2011

WV Department of
Natural Protection

N: 510,281.36
E: 2,010,488.03
Lat: 38.401473
Lon: 80.963227
Elev: 1162.77



SURVEYING AND MAPPING SERVICES PERFORMED BY:

ALLEGHENY SURVEYS, INC.

1-800-482-8606
P.O. BOX 438
BIRCH RIVER, WV 26610
PH: (304) 649-8606
FAX: (304) 649-8608

PREPARED FOR:

Range Resources-Pine Mountain, Inc.
P.O. Box 2136
Abingdon, VA 24212