

WW-7
8-30-06



West Virginia Department of Environmental Protection
Office of Oil and Gas
WELL LOCATION FORM: GPS

API: 47-015-02748 WELL NO.: CBM 2

FARM NAME: Paul B. Barringer II

RESPONSIBLE PARTY NAME: Range Resources – Pine Mountain, Inc.

COUNTY: Clay DISTRICT: Buffalo

QUADRANGLE: Swandale 7.5'

SURFACE OWNER: Allegheny Rural NMTC Forestlands, LLC

ROYALTY OWNER: Range Resources – Pine Mountain, Inc.

UTM GPS NORTHING: 4256971

UTM GPS EASTING: 505046 GPS ELEVATION: 274 m (901 ft)

The Responsible Party named above has chosen to submit GPS coordinates in lieu of preparing a new well location plat for a plugging permit or assigned API number on the above well. The Office of Oil and Gas will not accept GPS coordinates that do not meet the following requirements:

- Datum: NAD 1983, Zone: 17 North, Coordinate Units: meters, Altitude: height above mean sea level (MSL) – meters.
- Accuracy to Datum – 3.05 meters
- Data Collection Method:
Survey grade GPS : Post Processed Differential
Real-Time Differential
Mapping Grade GPS X: Post Processed Differential X
Real-Time Differential

4. Letter size copy of the topography map showing the well location.

I the undersigned, hereby certify this data is correct to the best of my knowledge and belief and shows all the information required by law and the regulations issued and prescribed by the Office of Oil and Gas.

Steve Ober
Signature

PS # 2180
Title

7/16/14
Date

Received
Office of Oil & Gas
OCT 31 2014

1502748 P

Topo Quad: Swandale 7.5'

Scale: 1" = 2000'

County: Clay

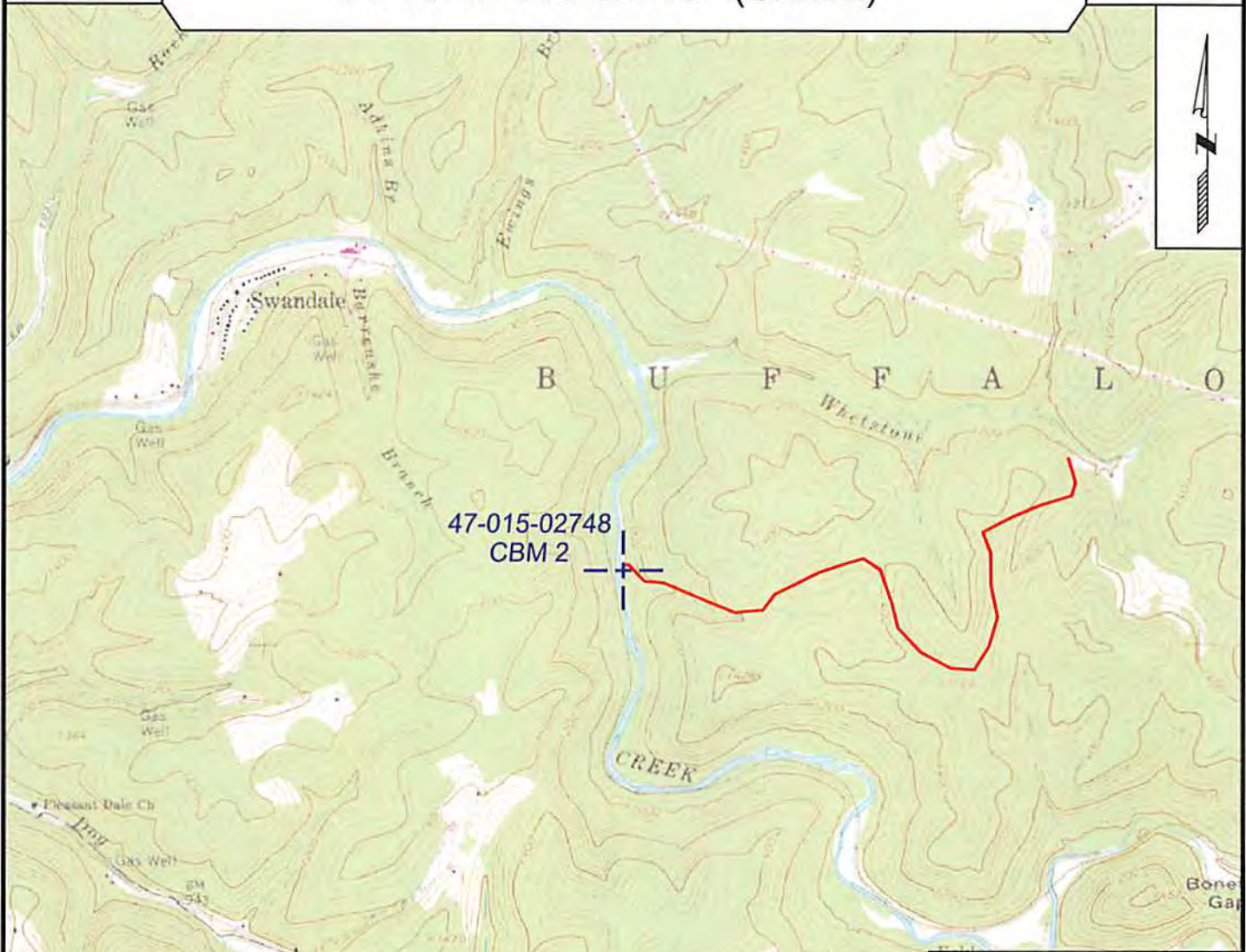
Date: June 26, 2014

District: Buffalo

Project No: 170-04-B-14

API # 47-015-02748 (CBM 2)

Topo



Received
Office of Oil & Gas
OCT 31 2014

NAD 27, WV South Zone

N: 531,973.75
E: 2,016,509.99
ELEV: 900.99

WGS 84
LAT: 38.461032
LONG: -80.942167



SURVEYING AND MAPPING SERVICES PERFORMED BY:
ALLEGHENY SURVEYS, INC.

1-800-482-8606
237 Birch River Road
Birch River, WV 26610
PH: (304) 649-8606
FAX: (304) 649-8608

PREPARED FOR:

Range Resources - Pine Mountain, Inc.

406 West Main Street
Abingdon, VA 24210