

LATITUDE

LONGITUDE

7'5 OGIS topo location

7.5' loc _____ 15' loc _____
(calc.) _____

Company UFC

Farm B.S. & S. (3891)

Elev. 1093' - Vol. VII

Quad 675 SC Swydale

County _____

District Henry

on north hillside of Mansford Fk.
of Laurel Ct. 0.67 mi. S of Valley Fork

0.82 N 38 30 } from Vol VII
2.64 E 81 10 } Deep well records
235
110

WELL LOCATION MAP

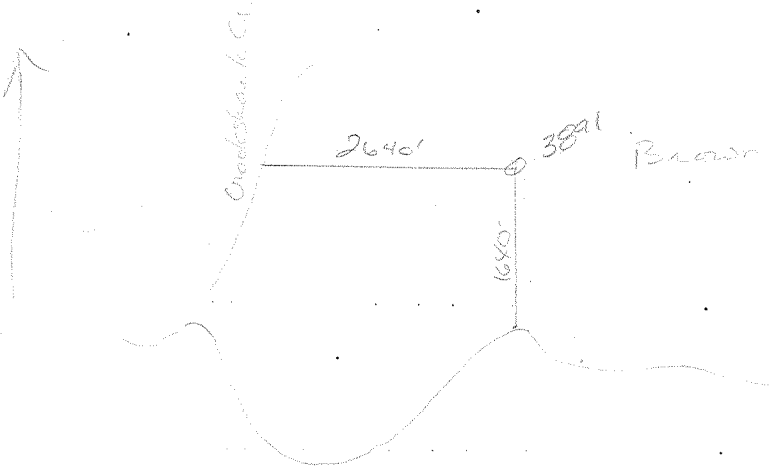
File No. Clay 1A

488970
462020

LATITUDE

7 1/2" scale

John Sandhuse



LONGITUDE

EB Stephens H.

7'5 OGIS topo location

7.5' loc _____ 15' loc _____
 " " " (calc.) _____

Company United Fuel Gas

Farm Brown, Barbara, Swan 3891

Quad _____

County Clay

District Henry

WELL LOCATION MAP

File No. 015-1-A

Clay

Henry District, Clay County, W. Va.

United Fuel Gas Co., Charleston, W. Va.

On 13,410 acres, surface owned by Geary Land Co., Charleston, W. Va.,
and mineral rights by Brown, Goshorn & Swan, Charleston, W. Va.

Elevation, 1093'.

13" conductor, 16"; 8½", 581'; 6-5/8", 1795'.

Farmaco Bottom hole packer, 6-5/8 x 8½ x 10, set at 1770'.

Coal was encountered at 507-509'.

Completion (deepening?) reported to Dept. of Mines June 20, 1930.

Well was not shot.

Clay 1-A

	Top.	Bottom.
Soil -	0	15
Gray sand	15	100
Brown slate	100	150
Gray sand	150	234
Black slate	234	240
Brown sand	240	326
Black slate	326	452
White sand	452	470
Black slate	470	507
Coal (LM)	507	509
Gray sand	509	580
Gray slate	580	582
White lime	582	600
Slate and shell	600	650
Lime	650	760
Black slate	760	865
Gray sand	865	895
Slate and shell	895	915
Black sandy lime	915	925
Black slate	925	954
Gray lime	954	973
White sand	973	1040
Black slate	1040	1055
Dark sand	1055	1090
Brown slate	1090	1105
Salt Sand	1105	1391
Black slate	1391	1398
Sandy lime	1398	1405
Black slate	1405	1409
White lime	1409	1420
White sand	1420	1442
White lime	1442	1505
Maxton Sand	1505	1534
Black slate	1534	1544
Lime shell	1544	1602
Black slate	1602	1608
Sandy lime	1608	1637
Red lime	1637	1653
Slate and shell	1653	1673
Little Lime	1673	1728
Fencil Cave	1728	1742
Big Lime (SLM)	1742	1892
(6-5/8" casing on 6-5/8 x 8½ x 10 Farmaco B.H. packer at 1770' SLM)		
Big Injun Sand (SLM) (show of oil 1899-1904')	1892	1916
Red lime	1916	1926

(OVER)

BROWN, GOSHORN & SWAN NO. 3891 WELL (Continued).

	Top.	Bottom.
Lime shell	1926	- 1993
Sand	1993	- 2010
Dark lime	2010	- 2050
Slate	2050	- 2147
Slate and shell	2147	- 2280
Black slate	2280	- 2295
Blue shell	2295	- 2340
Slate and shell	2340	- 2430
Lime	2430	- 2448
Slate	2448	- 2542
Slate and shell	2542	- 2580
Lime and shell	2580	- 2745
Gritty lime	2745	- 2782
Slate and lime	2782	- 2875
Gray slate	2875	- 2950
Slate and shell	2950	- 3325
Slate -	3325	- 3425
Gritty lime	3425	- 3460
Slate and shell	3460	- 3475
Gritty lime	3475	- 3525
Yellow-lime	3525	- 3550
Slate and lime	3550	- 3675
Gray lime	3675	- 3700
Lime shell	3700	- 3875
Lime shell and slate	3875	- 3940
Slate and shell	3940	- 4080
Light shells and slate	4080	- 4110
Hard shells	4110	- 4175
Black lime	4175	- 4200
Slate and shell	4200	- 4250
Black lime	4250	- 4275
Lime and slate	4275	- 4350
Hard lime	4350	- 4375
Hard shell and slate	4375	- 4490
Hard lime	4490	- 4495
Broken lime	4495	- 4695
Brown shale	4695	- 4710
Lime, shale, slate, to bottom	4710	- 5345