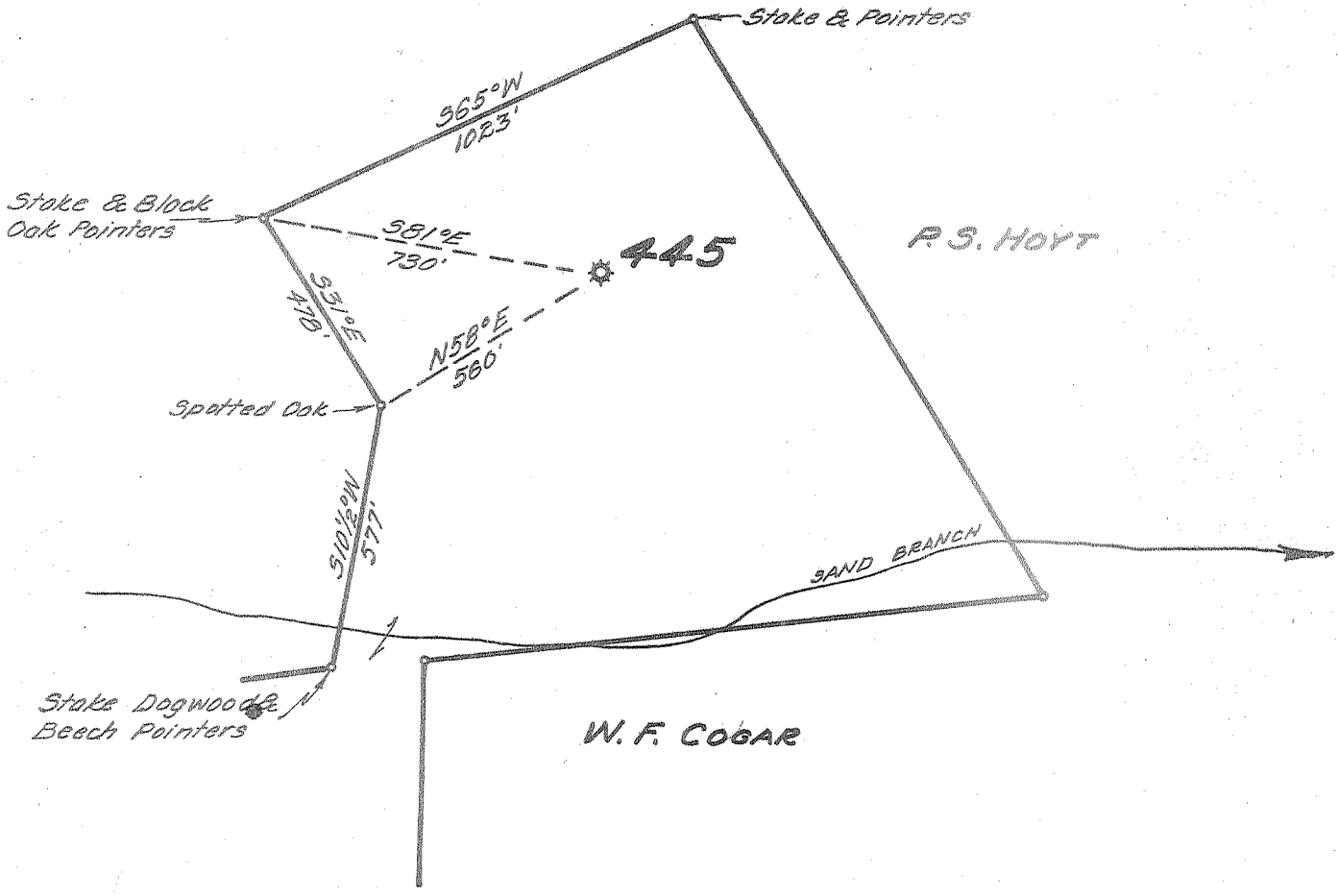


Latitude 38° 30'

Longitude 81° 10'

+ 42 W
3.015

P.S. & H.M. YOUNG



*Aband
4-25-55
ack*

New Location...
 Drill Deeper.....
 Abandonment.....

Company UNITED FUEL GAS CO.
 Address CHARLESTON, W.VA.
 Farm UNITED FUEL GAS CO. (MINERAL)
 Tract _____ Acres 1057 Lease No. 17675
 Well (Farm) No. 4 Serial No. 445
 Elevation (Spirit Level) 1043.1
 Quadrangle CLAY NW
 County CLAY District UNION
 Engineer Paul E. Jacobs
 Engineer's Registration No. 669
 File No. 82-65 Drawing No. _____
 Date 12-29-54 Scale 1"=400'

STATE OF WEST VIRGINIA
 DEPARTMENT OF MINES
 OIL AND GAS DIVISION
 CHARLESTON

WELL LOCATION MAP
 FILE NO. CLAY-84-A

+ Denotes location of well on United States Topographic Maps, scale 1 to 62,500, latitude and longitude lines being represented by border lines as shown.
 - Denotes one inch spaces on border line of original tracing.



STATE OF WEST VIRGINIA
DEPARTMENT OF MINES
OIL AND GAS DIVISION

940

Quadrangle Clay
Permit No. 84A

WELL RECORD

Oil or Gas Well Gas
(KIND)

Company UNITED FUEL GAS CO.
Address P.O. Box 1273, Charleston 25, W. Va.
Farm United Fuel Gas Co. Min. Acres 1507
Location (waters) Porters Creek
Well No. 445 Elev. 1043.1'
District Union County Clay
The surface of tract is owned in fee by United Fuel Gas Co.
Address _____
Mineral rights are owned by _____
Address _____
Drilling commenced 11-26-12
Drilling completed 1-26-13
Date Shot _____ From _____ To _____
With _____

Casing and Tubing	Used in Drilling	Left in Well	Packers
Size			
16			Kind of Packer
18		11'	<u>Callanhan</u>
10			Size of
8 1/4	700'		<u>3x6-5/8x16</u>
6 5/8		1637' 4"	Depth set
5 3/16			<u>1730</u>
3			Perf. top
2			Perf. bottom
Liners Used			Perf. top
			Perf. bottom

Open Flow 14 /10ths Water in _____ Inch
2 /10ths Merc. in _____ Inch
Volume 582,000 Cu. Ft.
Rock Pressure 410 lbs. _____ hrs.
Oil _____ bbls., 1st 24 hrs.
Fresh water 125 feet _____ feet
Salt water 1135' feet _____ feet

CASING CEMENTED _____ SIZE _____ No. Ft. _____ Date _____
COAL WAS ENCOUNTERED AT 100 FEET 48 INCHES
250 FEET 60 INCHES FEET INCHES
FEET INCHES FEET INCHES

Formation	Color	Hard or Soft	Top	Bottom	Oil, Gas or Water	Depth Found	Remarks
Conductor				11			
Sand			11	81			
Lime & Slate			81	100			
Coal			100	104	Hole full water at 125'		
Sand			104	149			
Slate			149	164			
Sand			164	189			
Slate			189	250	Gas in top of big Lime and oil in Bottom at 1702' 1 bailer in 24 Hrs.		
Coal			250	255			
Lime & Slate			255	295			
Little Dunkard			295	315			
Lime & Slate			315	590			
Big Dunkard			590	670			
Slate & Lime			670	860			
Gas Sand			860	880	Little gas at 865'		
Slate			880	900			
1st Salt Sand			900	1016	5 bailers water in 1st salt sand		
Slate			1016	1031			
2nd Salt Sand			1031	1365	Hole full - Water at 1135'		
Lime			1365	1375			
Red Rock & Shells			1375	1511	Little Gas at 1465'		
Maxon Sand			1511	1566			
Slate			1566	1568			
Little Lime			1568	1596			
Slate			1596	1604			
Lime (White)			1604	1612			
Pencil Cave			1612	1618			
Big Lime			1618	1747			
Break			1747	1755			
Injun			1755	1761			
Slate			1761	1811			
Total depth			1811'				

RECEIVED
WEST VIRGINIA
DEPT. OF MINES
JAN 1955

AUG 12 1955

