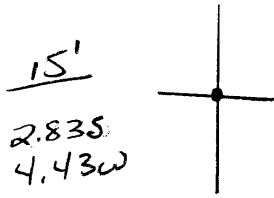


LATITUDE

38° 30' (10')

(S) 01.18

LONGITUDE



ridge of west of Porter Creek
north of Bonmont

Elev: 1190 B

7'5 OGIS topo location

7.5' loc _____ 15' loc _____
 _____ (calc.) _____

#202 on Map II of 1917 Clay Co. Rept.

Farm: Company P.S. & H.M. Young I

~~Co. Farm~~ Public O.G

Quad Clendenin (15') NE

County Clay

District Union

WELL LOCATION MAP

File No. GIS- 70123